

UNIPIN 200

Window-sill gluing and dowel driving
for high-quality window corner joints

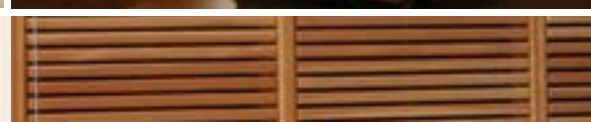


With wood into the future

Wood is a renewable resource that does not affect climate and makes us all breathe easier. While they are growing, trees store large amounts of carbon dioxide and incorporate it in their structure. The more wood that grows and is processed into objects of value such as windows, the more CO₂ is taken out of the environment. This is good for our climate. The CO₂ remains captured until the window comes to the end of its lifecycle and is thermally recycled. In addition to its positive environmental properties, wood is one of the most desirable materials that we have due to its natural, warm and attractive appearance. Wood is also an outstanding material because of its thermal insulation properties. 1 cm of wood provides as much insulation as 10 cm of brick.



**Good for the environment
and attractive to the eyes.**



Windows, doors, and the environment

Windows supply building interiors with daylight, refresh air and keep out negative environmental influences. The considerations that go into planning are correspondingly varied. For construction and installation, factors affecting building design, safety, hygiene, psychology and finances need to be taken into consideration.

Energy savings and environmental protection are the most significant factors. Heat needs to remain within the building. Sunlight needs to be enjoyed. Well-lit rooms with large windows are in great demand. Windows made of wood are able to satisfy all the requirements.

Bottom left: Passive solar house

Bottom middle: Historical windows

Bottom right: Window elements let in a great deal of sunlight



WEINIG UniPin 200

Dowel driving and window-sill gluing in no time

WEINIG is the leading provider of technology for the solid wood processing industry and small businesses. Our unrivaled worldwide coverage, extensive services, cost-effective system solutions and turnkey production facilities make WEINIG the all-round ideal partner when it comes to flexible, profitable production.

With the UniPin 200, WEINIG optimizes your production process and ensures consistent quality of your products. The UniPin 200 can glue work pieces automatically on the front side, drive in dowels and apply adhesive to counter-borings using hand guns. The machine includes 3-axis CNC controls with an online connection to the Conturex or sector software. The touch panel facilitates machine operation. The electronically dosed gluing and monitored driving depth of the dowels guarantee perfect corner joints.

Cleaning effort is kept to a minimum, even after long down times, ensuring a very high degree of machine availability.

The WEINIG UniPin 200 will allow you to produce doweled window corner joints efficiently.



me

Closed window sill joints require the utmost care and precision

Even glue application and, above all, the right glue quantity are decisive for the leak tightness and service life of a window. The UniPin 200 masters both to perfection. Permanently closed window sill joints are now among its quality hallmarks and will increase your customer satisfaction.



The WEINIG UniPin 200 gives you:

- Gluing and dowel driving in less than 3 seconds per dowel
- 3-axis CNC controls with an online connection to the Conturex or window software
- Glue system in V4A steel, suitable for processing of B4/D4 glue
- Electronic glue and dowel driving depth monitoring
- Window sill gluing (optional)
- Blowing out of dowel holes (optional)
- Counter-boring gluing (optional)
- Scanner technology for paperless production (optional)
- Double parts function

High-performance glue valve

A specially developed glue valve with a minimum opening time of up to 4 ms allows the front side to be covered quickly, precisely and evenly with glue points. This enables consistent, volume-dosed glue application and ensures unbeatable quality of your corner joints.

Subject to technical alterations. Statements and pictures in this brochure may contain items that are not included in the standard scope of supply. Some protective covers were removed for photographing.



Standard models and options



Glue system

- Suitable for processing of B4/D4 glue as a single component pursuant to DIN 68602 / EN 204
- Glue pressure max. 50 bar
- Pump guidance system completely in V4A steel



Electronic glue and dowel driving monitoring

- Monitoring of the nozzle needle and pressure differential at the glue nozzle ensures consistent glue application
- Adhesive volume and correct dowel position are decisive for the quality of the dowel corner joint



Window sill gluing (optional)

- Contact-free wetting of front wooden surfaces
- Point sizes and distances can be set individually
- Rows of dots are transferred online from the sector software
- Minimal glue discharge, meaning ultra-low cleaning requirements
- Precisely dosed glue quantity for optimal corner joint quality



Counter-boring gluing (optional)

- Hand gun for gluing borings on the longitudinal profile
- Convenient and ergonomic – guided by an extension arm with spring balancer and hose guide
- Solenoid valve for consistent glue quantities



Double parts processing (optional)

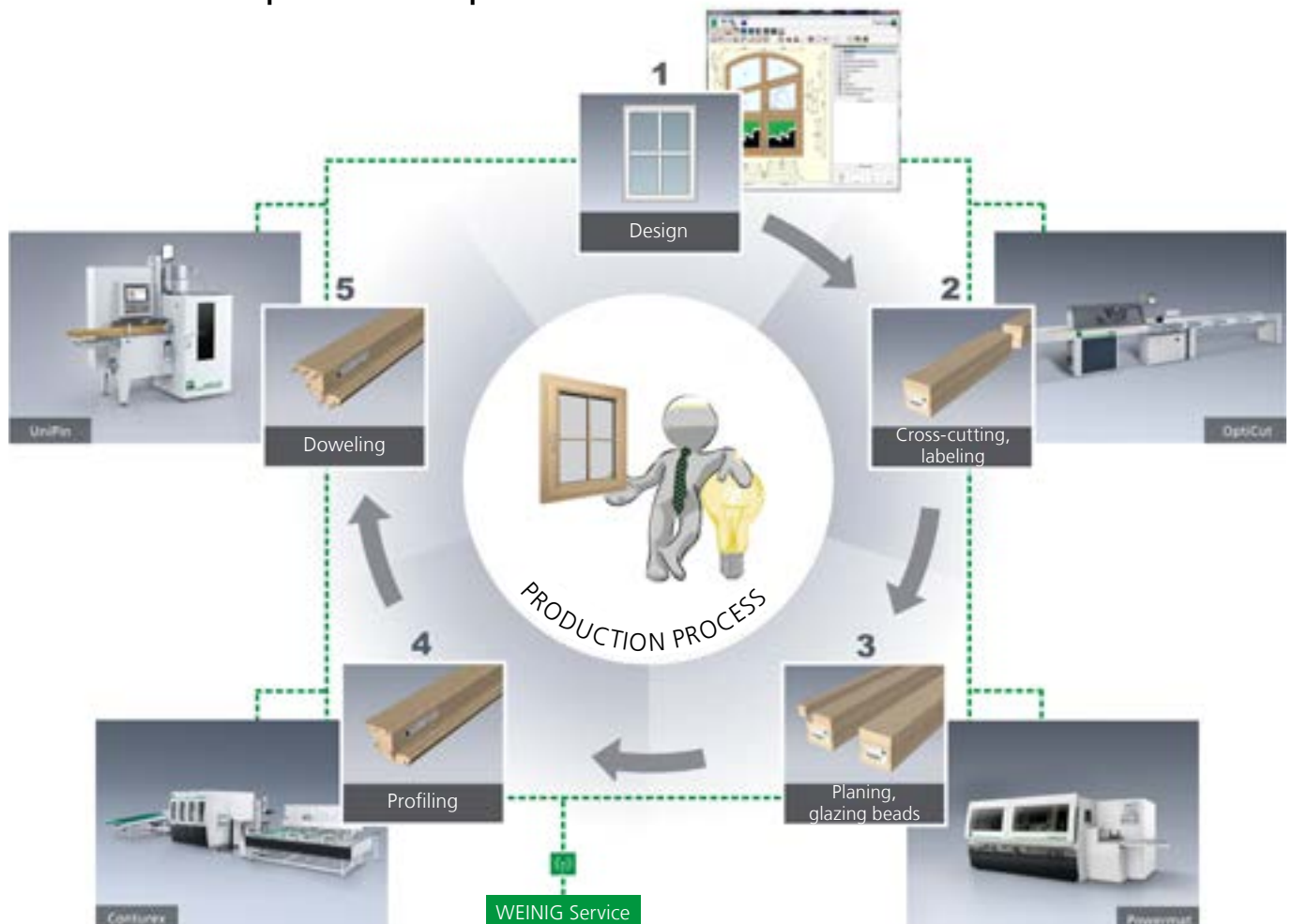
- A second processing row enhances the performance of the machine.
- While one piece is being processed, the second can be placed in the machine.

Everything from a single source - WEINIG: The complete system

Today's modern window manufacturer must offer a large spectrum of construction elements. The range of shapes, colors, wood varieties, fittings, window systems and timber widths is larger than ever. This requires a significant depth of production. From taking measurements, data collection and design in the window construction program to warehouse organization, pre-cutting with optimization or end-trimming of the timber, calibration or planing with strip production, complete single-part production and even driving in and gluing of dowels, everything must work perfectly. WEINIG product integration has created a standard communication platform in this production process.



WEINIG product integration One data set for all production components



UNIPIN 200



**Product Unit Windows /
CNC Technology**

MICHAEL WEINIG AG
Weinigstrasse 2/4
97941 Tauberbischofsheim
Germany

Telephone +49 9341 86-0
Fax +49 9341 70 80
info-window@weinig.com
www.weinig.com