

# **fiok**

**MADE IN ITALY**



**TESTE PER PIALLARE E  
TENONARE**

**MOULDING-PLANING-TENONING**

**CATALOGO**

**46 - B  
2016**

## CONDIZIONI GENERALI DI VENDITA

### ORDINI

Le ordinazioni si intendono accettate alle condizioni indicate nella conferma d'ordine e non potranno essere annullate né parzialmente né totalmente dal Committente. In mancanza di conferma d'ordine valgono le nostre condizioni generali di vendita.

### CONSEGNE

I termini di consegna pattuiti decorrono dalla data di definizione di tutti i dettagli inerenti l'ordinazione e saranno nel possibile rispettati. Eventuali ritardi, conseguenze di disguidi indipendenti dalla nostra volontà, non potranno essere motivo di annullamento o di richieste di indennizzi di nessun genere.

### SPEDIZIONI

La merce viene resa franco nostro stabilimento e spedita, salvo accordi diversi, con il mezzo più vantaggioso. La merce viaggerà sempre a rischio e pericolo del committente. Eventuali assicurazioni dovranno essere esplicitamente richieste e saranno fatturate al costo. L'imballo è sempre a carico del committente ed addebitato al costo.

### GARANZIA

Tutti i nostri utensili sono sottoposti ad accurati controlli e sono completamente garantiti. Si declina qualsiasi responsabilità per danni diretti ed indiretti dovuti all'utilizzo improprio dei materiali, dal logorio, da danni causati dal trasporto, da modifiche effettuate senza la nostra approvazione od alla non osservanza delle norme e delle condizioni di impiego indicate su utensili, manuali o cataloghi e sito internet.

### RESTITUZIONI E RECLAMI

Non si accettano restituzioni della merce, a nessun titolo, se non preventivamente autorizzate da FINK srl. I reclami per merce sbagliata o difettosa dovranno essere inviati alla nostra sede esclusivamente tramite documentazione scritta indicante il difetto riscontrato, entro 8 giorni dal ricevimento della merce.

### PREZZI

I prezzi si intendono I.V.A. esclusa, che sarà applicata con l'aliquota vigente al momento della spedizione. La merce si intende fornita franco nostra fabbrica e l'imballo è a carico del committente. Salvo accordi particolari comprovati dalla conferma d'ordine, vengono applicati i prezzi di listino in vigore alla data dell'ordine della merce. Fori speciali a partire da € 8,00.

### PAGAMENTI

Gli importi delle fatture vanno pagati per intero alle scadenze stabilite e direttamente a FINK srl. Non sono ammessi arrotondamenti o trattenute arbitrarie. Tutte le spese accessorie sono a carico del cliente. Il mancato rispetto dei termini di pagamento autorizza FINK srl, al recupero di ogni spesa accessoria, agli interessi maturati secondo quanto previsto dal D.Lgs 9/10/2002 n.231, ci riserviamo inoltre il diritto alla sospensione di eventuali ordini in corso. La merce rimane proprietà di FINK srl fino al pagamento totale della fornitura e delle eventuali spese accessorie.

### DIRITTI D'AUTORE

Tutti i diritti sono riservati a norma di legge. FINK srl fa divieto a chiunque di copiare, riprodurre testi, disegni, illustrazioni in modo totale o parziale, senza il suo consenso scritto.

### FORO COMPETENTE

Per qualsiasi controversia, il foro competente è esclusivamente quello di Monza. I contratti, anche se stipulati con acquirenti stranieri o per materiali forniti all'estero sono regolati dalla legislazione Italiana.

### SPECIFICAZIONI E DISEGNI

I prodotti FINK srl sono soggetti a continue innovazioni; ci si riserva il diritto di apportare le modifiche ed i miglioramenti ritenuti opportuni senza incorrere in alcun tipo di obbligazione per quelli già venduti.

## GENERAL TERMS OF SALE

### ORDERS

Orders are accepted with the conditions indicated in the order confirmation and may neither be totally nor partially cancelled by the customer. Without an order confirmation are valid our general terms of sale.

### DELIVERY TERMS

The delivery dates are only indicative and will be respected as much as possible and start from the date when all the details concerning the order are defined. Possible delays, due to unexpected events, that do not depend from our, will cannot be reason of claim, cancellation of the order or request for any compensation

### SHIPMENTS

Goods are delivered ex-factory and with the most advantageous forwarding agent, except different agreements with the buyer. Freight costs and risks will be at the charge of the buyer. Shipment will be covered by insurance guarantee only if expressly requested by the buyer and charged at cost. No claim can be entertained in case of goods short delivered, damaged or lost in transit. Packing is at the charge of the buyer and debited at the real cost.

### GUARANTEE

All our tools are carefully controlled and guaranteed. The guarantee does not include damages caused during the transport, defects due to wear, wrong or improper use, non maintenance, handlings or modifications made without our approval, the failure to comply with the safety rules and the instructions of use indicated on the tools, catalogues, guides or web-site.

### RETURNS AND CLAIMS

Fink does not accept returns of the goods if not previously authorized. Claims for wrong or defective goods have to be communicated only in writing within 8 days from the receipt of the goods mentioning the description of the defect.

### PRICES

Prices are considered ex-factory without V.A.T., which will be imposed with the share in force during the invoicing. The packing is at the charge of the buyer. Except particular agreements stated in the order confirmation we will apply the price-list in force at the moment of the order. Extra cost for special bores from € 8,00.

### PAYMENTS

The invoices amounts have to be fully paid, on stated maturity, to Fink S.r.l. All extra charges are at the customer expense. Payments may not be rounded down or reduced under any circumstances. If the terms of payment are not honoured Fink S.r.l. can interrupt new supplies and debit all the due interests as well as any additional expense. The delivery terms will be automatically extended. The passing of property of the products supplied by Fink S.r.l. to the customer will take place after complete settlement of the invoices.

### RESERVED OWNERSHIP RIGHTS

All rights are reserved in accordance with the law and international agreements. This catalogue not be reproduced or copied (even in part) without prior and written authorization on the part of Fink S.r.l.

### PLACE OF JURISDICTION

For any legal matter the place of jurisdiction is Monza. The contracts, even if defined with foreign Buyers or for goods to be sent abroad, are regulated by the Italian legislation.

### SPECIFICATION AND DRAWINGS

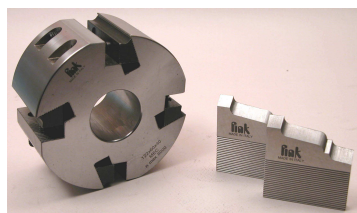
Our tools are subject to continuous innovations, we reserve the right to make improvements and modifications that we consider appropriate without incurring in any kind of duty for the products already sold.

### THE PRICE-LIST 2011 CANCEL AND REPLACES THE PREVIOUS ONE.



# PROFILATURA - PIALATURA - TENONATURA

## MOULDING - PLANING - TENONING



**TESTE PER COLTELLI RIGATI**  
*CUTTERBLOCKS FOR  
CORRUGATED KNIVES*

**ART. 124 - 124C**



**TESTE MULTITAGLIO**  
*MULTICUT CUTTERBLOCKS*

**ART. 5/VE - 5/SP - 5/VEF**



**COLTELLI RIGATI**  
*CORRUGATED KNIVES*

**ART. 125**



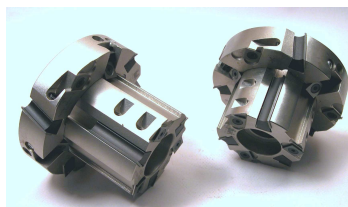
**TESTE PER TENONARE**  
*CUTTER HEADS FOR  
TENONS*

**ART. 5/VEB - 5/VEC  
5/VED - 5/VES**



**TESTE PER COLTELLI  
DA PIALLA**  
*CUTTEBLOCKS FOR  
PLANING KNIVES*

**ART.131**



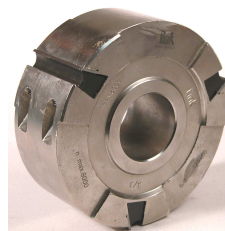
**TENONATRICI  
ARROTONDANTI**  
*ROUNDING TENONING  
MACHINES*

**ART. 5/TB**



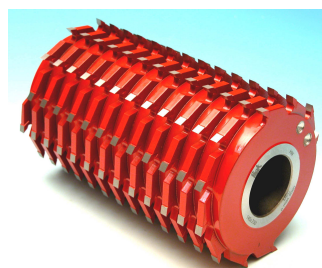
**COLTELLI DA PIALLA**  
*PLANING KNIVES*

**ART.129**



**TESTE COMPONENTI**  
*BUILD UP CUTTER  
HEADS*

**ART. 5/Z**



**FRESE PER SPIANATURA**  
*CUTTER HEADS FOR LEVELLING*

**ART. 132**



**ART. QUICKBLOCK**



**ART. POWER LOCK**



**ART. QUICK PROFIL**

**CATALOGO 46 B 2016**

**fiak**

# 124 TESTE PER COLTELLI RIGATI

## CUTTERBLOCK FOR CORRUGATED KNIVES



**124**

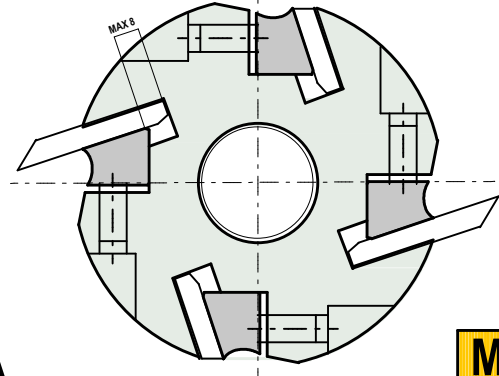
**MEC**

Codice	D. mm.	B mm.	d. mm.	Z	
124 040 CNC	98	40	30	2	n max 9000
124 060 CNC	98	60	30	2	n max 9000
124 080 CNC	98	80	30	2	n max 9000
124 100 CNC	98	100	30	2	n max 9000
124 040	122	40	35-40	4	n max 8000
124 060	122	60	35-40	4	n max 8000
124 080	122	80	35-40	4	n max 8000
124 100	122	100	35-40	4	n max 8000
124 130	122	130	40	4	n max 8000
124 150	122	150	40	4	n max 8000
124 180	122	180	40	4	n max 8000
124 230	122	230	40	4	n max 8000

ALTEZZA COLTELLI HEIGHT KNIVES mm	DIAMETRO AI COLTELLI DIAMETER AT KNIVES mm	
	TESTA D.122	TESTA D.137
50	160	175
60	180	195
70	200	215

TESTA PER COLTELLI ZIGRINATI IN HSS. COLTELLI NON COMPRESI CON LA TESTA. REGOLAZIONE DEL DIAMETRO MEDIANTE DENTATURA PER COMPENSARE L'AFFILATURA. PASSO DENTATURA = 1.587 mm

SAFETY PROFILE CUTTERBLOCK WITH PRECISION GROUND SERRATIONS ON BACK. HSS KNIVES NOT INCLUDED WITH THE HEAD



**124 A**

**MEC**

Codice	D. mm.	B mm.	d. mm.	Z	
124 040 A	137	40	50	4	n max 7000
124 060 A	137	60	50	4	n max 7000
124 080 A	137	80	50	4	n max 7000
124 100 A	137	100	50	4	n max 7000
124 130 A	137	130	50	4	n max 7000
124 150 A	137	150	50	4	n max 7000
124 180 A	137	180	50	4	n max 7000
124 230 A	137	230	50	4	n max 7000

RICAMBI-SPARE PARTS		
Codice nr.	Dimensioni	
000/008C	M10x25	GRANI - SCREWS
000/034	5 mm	CHIAVE ESAGONALE
CUNEI DI BLOCCAGGIO VEDI CATALOGO RICAMBI FOR WEDGES SEE ACCESSORIES CATALOGUE		

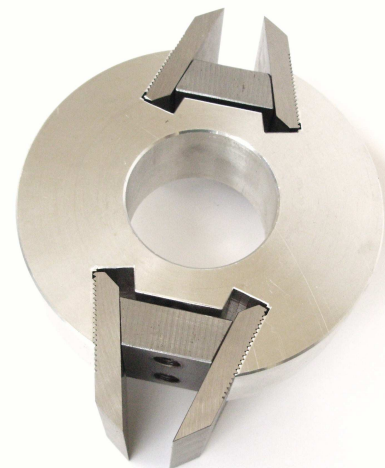
## TESTA PER COLTELLI RIGATI CON LIMITATORI PER AVANZAMENTO MANUALE

**124 MAN**

**MAN**

Codice	D. mm.	B mm.	d. mm.	Z	
124 040 MAN	122	40	30	2	n 5000 - 8000
124 060 MAN	122	60	30	2	n 5000 - 8000
124 080 MAN	122	80	30	2	n 5000 - 8000
124 100 MAN	122	100	30	2	n 5000 - 8000

## CUTTERBLOCK FOR CORRUGATED KNIVES AND DEFLECTORS FOR MANUAL FEED



# 125 COLTELLI RIGATI - HSS 18%

CORRUGATED KNIVES -HSS QUALITY



## 125

Codice	B	H	S	T. MAX
	mm.	mm.	mm.	mm.
125 040	40	50	8	17
125 060	60	50	8	17
125 080	80	50	8	17
125 100	100	50	8	17
125 130	130	50	8	17
125 150	150	50	8	17
125 180	180	50	8	17
125 230	230	50	8	17
125 650	650	50	8	17

## 125 A

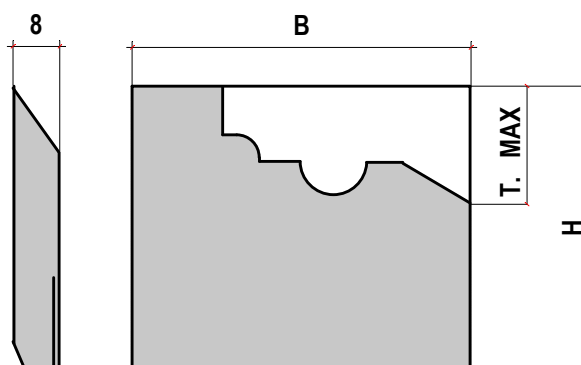
Codice	B	H	S	T. MAX
	mm.	mm.	mm.	mm.
125 040 A	40	60	8	25
125 060 A	60	60	8	25
125 080 A	80	60	8	25
125 100 A	100	60	8	25
125 130 A	130	60	8	25
125 150 A	150	60	8	25
125 180 A	180	60	8	25
125 230 A	230	60	8	25
125 650 A	650	60	8	25

## 125 B

Codice	B	H	S	T. MAX
	mm.	mm.	mm.	mm.
125 040 B	40	70	8	32
125 060 B	60	70	8	32
125 080 B	80	70	8	32
125 100 B	100	70	8	32
125 130 B	130	70	8	32
125 150 B	150	70	8	32
125 180 B	180	70	8	32
125 230 B	230	70	8	32
125 650 B	650	70	8	32

COLTELLI IN HSS SPESSORE 8 mm  
COLTELLI PROFILATI A RICHIESTA

SOLID HSS QUALITY 8 mm.  
THICKNESS BLANK KNIVES WITH PRECISION  
GROUND SERRATED BACK TO USE WITH FINK  
PROFILE CUTTER HEADS ART.124  
STEP 1.587 mm  
PROFILED KNIVES ON REQUEST



COLTELLI PROFILATI A RICHIESTA  
PROFILED KNIVES ON REQUEST

40-50-60-70  
HSS  
MAX.30  
8

40-230

40-50-60-70  
HM  
14-30  
10

38-50-60  
HSS + HM  
MAX.30  
10

**COLTELLI CON RIPORTO HM  
A RICHIESTA**  
KNIVES WITH HM AND  
HSS+HM ON REQUEST

# 129 COLTELLI DA PIALLA

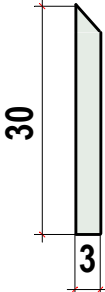
PLANING KNIVES - 13%Cr, M2, HW



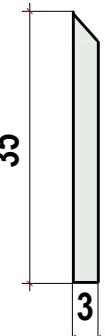
## 129A 13%Cr

Codice	L.	B	S
	mm.	mm.	mm.

129A30	300	30	3
129A35	350	30	3
129A40*	400	30	3
129A43	430	30	3
129A50*	500	30	3
129A53	530	30	3
129A60*	600	30	3
129A63	630	30	3
129A70*	700	30	3



129A30N	300	35	3
129A35N	350	35	3
129A40N*	400	35	3
129A43N	430	35	3
129A50N*	500	35	3
129A53N	530	35	3
129A60N*	600	35	3
129A63N	630	35	3
129A70N*	700	35	3



\* SEMPRE DISPONIBILI A MAGAZZINO

\* ALWAYS IN STOCK

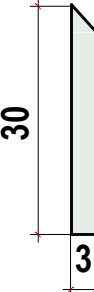
COLTELLI IN CONFEZIONI DA 2 o 4 PEZZI.  
PER CALCOLARE IL PREZZO DI MISURE INTERMEDIE  
FARE RIFERIMENTO ALLA LUNGHEZZA SUPERIORE.  
MISURE INFERIORI A QUELLE DEL CATALOGO SU  
RICHIESTA.

THE THIN KNIVES ARE PACKED WITH 2 OR 4 PCS.  
TO CALCULATE PRICE OF INTERMEDIATE LENGHT  
DIMENSIONS MAKE REFERENCE TO HIGHER  
LENGHT.LOWER OR HIGHER LENGHT NOT IN  
LIST:ON REQUEST.

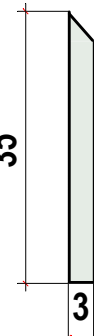
## 129S HSS 18%W

Codice	L.	B	S
	mm.	mm.	mm.

129S30	300	30	3
129S35	350	30	3
129S40*	400	30	3
129S43	430	30	3
129S50*	500	30	3
129S53	530	30	3
129S60*	600	30	3
129S63	630	30	3
129S70*	700	30	3



129S30N	300	35	3
129S35N	350	35	3
129S40N*	400	35	3
129S43N	430	35	3
129S50N*	500	35	3
129S53N	530	35	3
129S60N*	600	35	3
129S63N	630	35	3
129S70N*	700	35	3



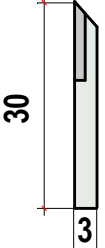
\* SEMPRE DISPONIBILI A MAGAZZINO

\* ALWAYS IN STOCK

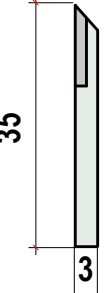
## 129 H HM RIPORTATO

Codice	L.	B	S
	mm.	mm.	mm.

129H13	130	30	3
129H15	150	30	3
129H18	180	30	3
129H23	230	30	3
129H30	300	30	3
129H35	350	30	3
129H40	400	30	3
129H50	500	30	3




129H13N	130	35	3
129H15N	150	35	3
129H18N	180	35	3
129H23N	230	35	3
129H30N	300	35	3
129H35N	350	35	3
129H40N	400	35	3
129H50N	500	35	3



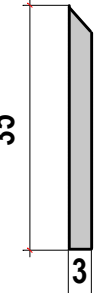
## 129 W HM INTEGRALE

Codice	L.	B	S
	mm.	mm.	mm.

129W10	100	30	3
129W13	130	30	3
129W15	150	30	3
129W18	180	30	3
129W21	210	30	3
129W23	230	30	3
129W25	250	30	3
129W30	300	30	3



129W10N	100	35	3
129W13N	130	35	3
129W15N	150	35	3
129W18N	180	35	3
129W21N	210	35	3
129W23N	230	35	3
129W25N	250	35	3
129W30N	300	35	3



# 131 TESTE PER COLTELLI DA PIALLA

## CUTTERBLOCK FOR PLANING KNIVES



TESTE PORTA COLTELLI COMPLETE DI COLTELLI AL 13% Cr CON ALTEZZA 30mm (D.100 h 25mm.) IL DIAMETRO SI INTENDE MISURATO AI COLTELLI. CORPO STANDARD IN LEGA LEGGERA, IN ACCIAIO A RICHIESTA. MISURE SPECIALI PER NUMERO DI DENTI E DIAMETRI A RICHIESTA.

CUTTERBLOCKS FOR PLANING KNIVES SUPPLIED WITH KNIVES QUALITY 13% Cr H=30mm (H25mm D.100) SERRATED BACK. THE DIAMETER 125 IS MEASURED ON THE KNIVES. STEEL BODY ON REQUEST ONLY. ALSO SPECIAL SIZES ON LENGTH DIAMETER, TEETH ARE PRODUCED ON REQUEST.

### 131 CORPO IN ACCIAIO STEEL BODY

**MEC**

Codice	D. mm.	B mm.	d. mm.	Z	
131 1012	100	120	35	4	n max 9000
131 1019	100	190	35	4	n max 9000
131 10	125	100	40	4	n max 8000
131 13	125	130	40	4	n max 8000
131 15	125	150	40	4	n max 8000
131 18	125	180	40	4	n max 8000
131 23	125	230	40	4	n max 8000

### 131 A CORPO IN LEGA LEGGERA LIGHT ALLOY BODY

**MEC**

Codice	D. mm.	B mm.	d. mm.	Z	
131 A 1012	100	120	35	4	n max 9000
131 A 1019	100	190	35	4	n max 9000
131 A 10	125	100	40	4	n max 8000
131 A 13	125	130	40	4	n max 8000
131 A 15	125	150	40	4	n max 8000
131 A 18	125	180	40	4	n max 8000
131 A 23	125	230	40	4	n max 8000

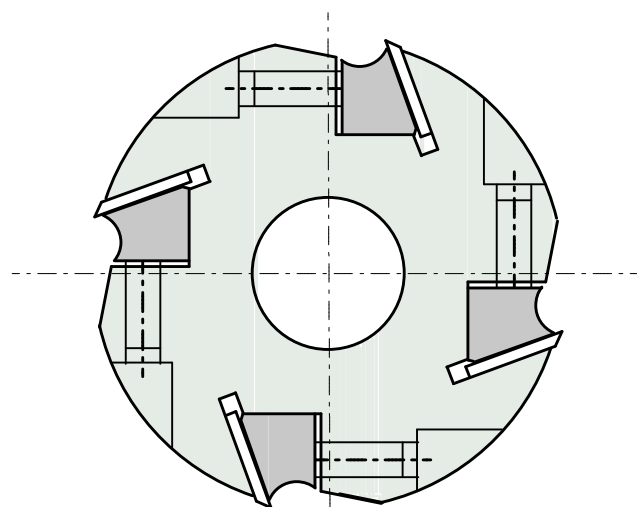
**A RICHIESTA  
DIMENSIONI SPECIALI E CON BLOCCAGGIO HYDRO**

**ON REQUEST  
SPECIAL DIMENSIONS AND HYDRO BLOCK**

#### RICAMBI-SPARE PARTS

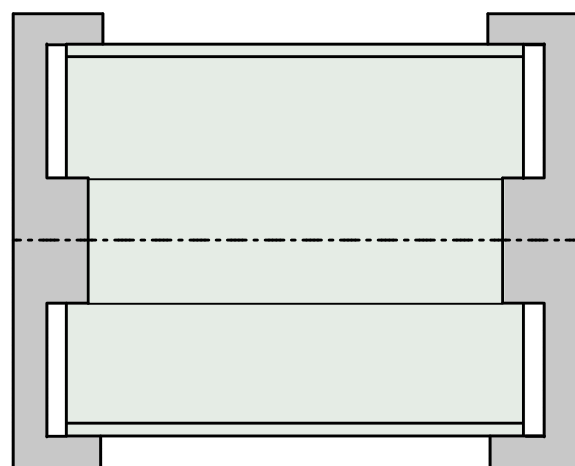
Codice nr.	Dimensioni	
000/008B	M10x20	GRANI PER TESTE D.100mm
000/008C	M10x25	GRANI SCREWS
000/034	5 mm	CHIAVE ESAGONALE WRENCH

**CUNEI DI BLOCCAGGIO VEDI CATALOGO RICAMBI  
FOR WEDGES SEE ACCESSORIES CATALOGUE**



### 131 C COPPIA CALIBRI PER TESTE 131 SETTING GAUGES FOR HEADS 131

Codice	D. mm.	B mm.	d. mm.
131 C100	100	20	35
131 C125	125	20	40



# 129 B COLTELLI BULLDOZER

## PLANING HW REVERSIBLE KNIVES

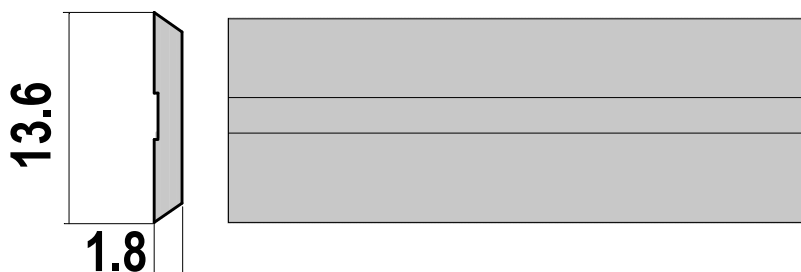


COLTELLI PIALLA REVERSIBILI IN HW INTEGRALE PER TESTE ART.131B.

MISURE DIVERSE DA QUELLE DEL CATALOGO SU RICHIESTA.

REVERSIBLE HW PLANING KNIVES FOR CUTTERBLOCK 131B

LENGHT NOT IN LIST ON REQUEST.



## 129 B

## HW

Codice	L. mm.	B mm.	S mm.
129 B 060	60	13.6	1.8
129 B 080	80	13.6	1.8
129 B 100	100	13.6	1.8
129 B 120	120	13.6	1.8
129 B 130	130	13.6	1.8
129 B 150	150	13.6	1.8
129 B 180	180	13.6	1.8
129 B 210	210	13.6	1.8
129 B 230	230	13.6	1.8
129 B 250	250	13.6	1.8
129 B 260	260	13.6	1.8

I COLTELLI PIALLA SISTEMA BULLDOZER SONO DISPONIBILI SOLO IN HW, SONO REVERSIBILI PERCHE' HANNO DOPPIO TAGLIENTE, SI POSSONO RIAFFILARE.

THE BULLDOZER SYSTEM KNIVES ARE AVAILABLE IN HW ONLY, AND ARE REVERSIBLES, AS DOUBLE-EDGED. ONE REGRINDING ONLY.

LUNGHEZZA MASSIMA 260 mm.

MAX LENGHT 260 mm.



# 131 B TESTE PER COLTELLI BULLDOZER

CUTTERBLOCK FOR BULLDOZER SYSTEM KNIVES



TESTE PORTACOLTELLI COMPLETE DI COLTELLI HW SISTEMA BULLDOZER.  
CORPO STANDARD IN LEGA LEGGERA.  
(ACCIAIO A RICHIESTA)  
COLTELLI REVERSIBILI RIAFFILABILI

CUTTERBLOCK WITH HW PLANING KNIVES  
BULLDOZER SYSTEM.  
STANDARD TOOL WITH LIGHT ALLOY BODY.  
(STEEL BODY ON REQUEST).  
REVERSIBLE RESHARPENABLE KNIVES

## 131 B CORPO IN ACCIAIO STEEL BODY

**MEC**

Codice	D. mm.	B mm.	d. mm.	Z	
131 B 1012	100	120	35	4	n max 10000
131 B 1019	100	190	35	4	n max 10000
131 B 10	125	100	40	4	n max 9000
131 B 13	125	130	40	4	n max 9000
131 B 15	125	150	40	4	n max 9000
131 B 18	125	180	40	4	n max 9000
131 B 23	125	230	40	4	n max 9000

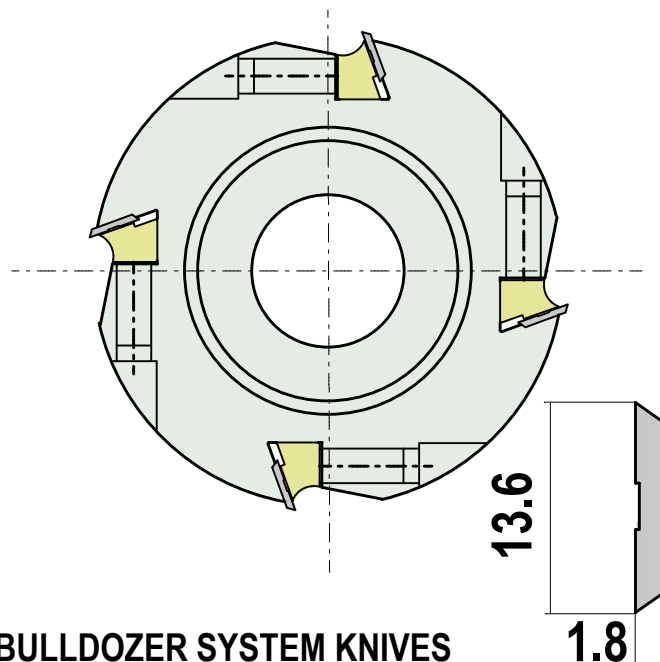
## 131 BA CORPO IN LEGA LEGGERA LIGHT ALLOY BODY

**MEC**

Codice	D. mm.	B mm.	d. mm.	Z	
131 BA 1012	100	120	35	4	n max 10000
131 BA 1019	100	190	35	4	n max 10000
131 BA 10	125	100	40	4	n max 9000
131 BA 13	125	130	40	4	n max 9000
131 BA 15	125	150	40	4	n max 9000
131 BA 18	125	180	40	4	n max 9000
131 BA 23	125	230	40	4	n max 9000



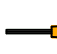
ALTRI FORI A RICHIESTA / OTHERS BORES ON REQUEST

**DIMENSIONI SPECIALI A RICHIESTA**  
SPECIAL DIMENSIONS ON REQUEST



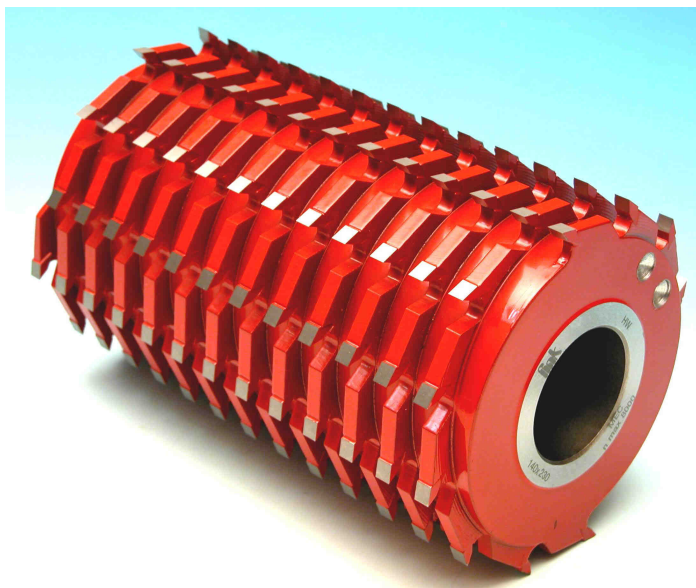
## BULLDOZER SYSTEM KNIVES

### RICAMBI-SPARE PARTS

Codice nr.	Dimensioni	
129 B 100	100 x 13.6 x 1.8	<b>COLTELLI HW BULLDOZER</b>  HW KNIVES BULLDOZER SYSTEM
129 B 120	120 x 13.6 x 1.8	
129 B 130	130 x 13.6 x 1.8	
129 B 150	150 x 13.6 x 1.8	
129 B 180	180 x 13.6 x 1.8	
129 B 210	210 x 13.6 x 1.8	
129 B 230	230 x 13.6 x 1.8	
129 B 250	250 x 13.6 x 1.8	
129 B 260	260 x 13.6 x 1.8	
C 100	L=100	
C 120	L=120	
C 130	L=130	
C 150	L=150	
C 180	L=180	
C 210	L=210	
C 230	L=230	
C 250	L=250	
C 260	L=260	
000/008	M8x15	 GRANI SCREWS
000/032	4 mm	 CHIAVE ESAG. WRENCH

# 132 H FRESE PER SPIANARE

## MILLING CUTTER HEAD



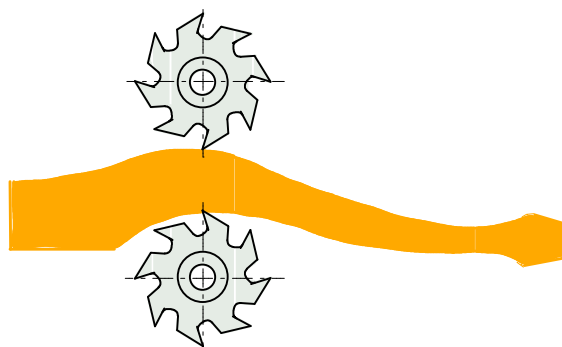
FRESE IN HW SALDATO PER COPIARE E SPIANARE.  
MISURE SPECIALI A RICHIESTA; LUNGHEZZE SUPERIORI  
A 230 mm REALIZZATE ANCHE IN COMPOSIZIONE. PER  
TENONARE CON LAMA CIRCOLARE IN TESTA.

CUTTER HEAD MULTITEETH WITH HW WELDED.  
MAX LENGHT 230 mm. SPECIAL DIMENSIONS ON REQUEST.  
FOR TENONS WITH SAW BLADES

## 132 H

**MEC**

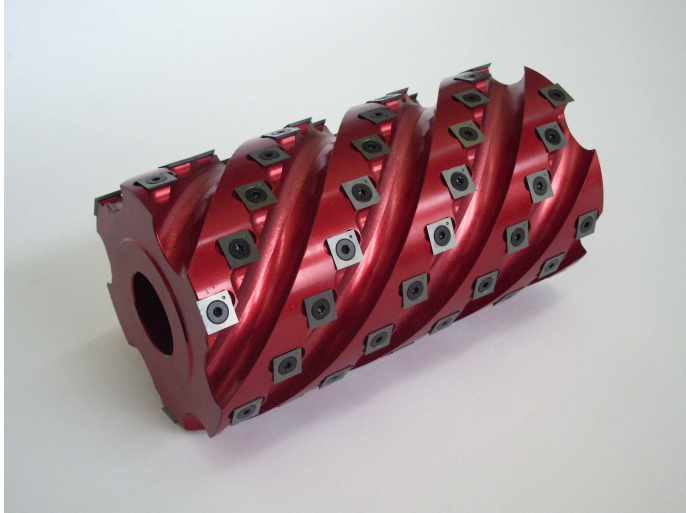
Codice nr. HW	D. mm.	B mm.	d. mm.	Z	
132 H 0880	80	80	35	8	n max 12000
132 H 0810	80	100	35	8	n max 12000
132 H 1012	100	120	35	8	n max 10000
132 H 1018	100	180	35	8	n max 10000
132 H 1212	125	120	40	12	n max 9000
132 H 1215	125	150	40	12	n max 9000
132 H 1218	125	180	40	12	n max 9000
132 H 1223	125	230	40	12	n max 9000
132 H 1212-16	125	120	40	16	n max 9000
132 H 1215-16	125	150	40	16	n max 9000
132 H 1218-16	125	180	40	16	n max 9000
132 H 1223-16	125	230	40	16	n max 9000



DIMENSIONI SPECIALI A RICHIESTA  
SPECIAL DIMENSIONS ON REQUEST

# 5/SP TESTE A SPIRALE MULTITAGLIO

## SPIRAL PLANING HEADS



**5/SP**

**MEC**

Codice nr. HW	D. mm.	B mm.	d. mm.	Z	
<b>5/SP 62</b>	<b>62</b>	<b>80</b>	<b>30</b>	<b>16</b>	<b>14x14x2</b>
5/SP 1012	100	120	35	36	14x14x2
5/SP 1019	100	190	35	60	14x14x2
5/SP 1212	125	120	40	36	14x14x2
5/SP 1213	125	130	40	42	14x14x2
5/SP 1215	125	150	40	48	14x14x2
5/SP 1218	125	180	40	54	14x14x2
5/SP 1223	125	230	40	72	14x14x2
5/SP 1226	125	260	40	78	14x14x2
5/SP 1412	140	120	40	36	14x14x2
5/SP 1413	140	130	40	42	14x14x2
5/SP 1415	140	150	40	48	14x14x2
5/SP 1418	140	180	40	54	14x14x2
5/SP 1423	140	230	40	72	14x14x2
5/SP 1426	140	260	40	78	14x14x2

TESTE PER PIALLARE CON COLTELLI HW REVERSIBILI.  
DISPONIBILITA' DI VARIE MISURE PER TUTTE  
LE MACCHINE. CORPO IN LEGA LEGGERA

**USARE PER SEMIFINITURA.**

**A RICHIESTA POSSONO ESSERE EQUIPAGGIATE  
CON COLTELLI SMUSSATI PER MIGLIORARE  
LA FINITURA. (000/180S)**

**ANODIZZAZIONE ROSSA A RICHIESTA**

PLANING HEAD WITH HW REVERSIBLE KNIVES.  
AVAILABLE FOR DIFFERENT MACHINES.  
DIFFERENT SIZES OF DIAMETER AND LENGHT.  
LIGHT ALLOY BODY

**TO BE USED ONLY FOR SEMI-FINISHING WORK.**

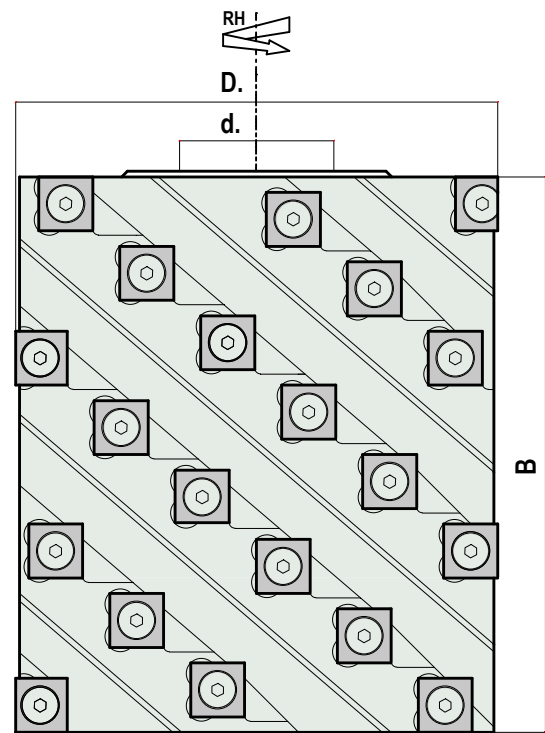
**ON REQUEST RADIUS KNIVES FOR  
A BETTER FINISHING.(000/180S)**

**RED FINISH ON REQUEST**

D.100 n max 10000

D.125 n max 8500

D.140 n max 8000



**DIMENSIONI SPECIALI A RICHIESTA  
SPECIAL DIMENSIONS ON REQUEST**

### RICAMBI-SPARE PARTS

Codice nr.	Dimensioni	
000/180	14x14x2	STANDARD KNIFE
000/180S	14x14x2	<b>COLTELLO SMUSSATO</b>
000/018	M5x8	VITE -SCREW
000/039	T20	CHIAVE TORX -WRENCH

# 5/VE TESTE CON COLTELLI HW A SPIRALE

## PLANING INSERT SPIRAL MULTICUTS



CORPO IN LEGA LEGGERA. TAGLIO FRAZIONATO PER:  
AUMENTARE L'AVANZAMENTO, DIMINUIRE LA RUMOROSITA'  
E LA POTENZA. PER SGROSSARE, CONTORNARE, COPIARE.  
A RICHIESTA POSSONO ESSERE EQUIPAGGATE CON  
COLTELLI SMUSSATI PER MIGLIORARE LA FINITURA.

*LIGHT ALLOY BODY. SPIRAL PLANING HEAD WITH STANDARD  
KNIVES. ON REQUEST RADIUS TC TURNOVER KNIVES FOR A  
BETTER FINISHING.*

### 5/VE

**MEC**

Codice nr. HW	D. mm.	B mm.	d. mm.	Z	
5/VE 1012	100	120	35	14	30x12x1.5
5/VE 1018	100	184	35	24	30x12x1.5
5/VE 1212	125	120	40	14	30x12x1.5
5/VE 1213	125	130	40	16	30x12x1.5
5/VE 1215	125	150	40	18	30x12x1.5
5/VE 1218	125	184	40	24	30x12x1.5
5/VE 1220	125	200	40	26	30x12x1.5
5/VE 1223	125	232	40	30	30x12x1.5
5/VE 1224	125	246	40	32	30x12x1.5
5/VE 1226	125	260	40	34	30x12x1.5

D.100 n max 10000

D.125 n max 9000

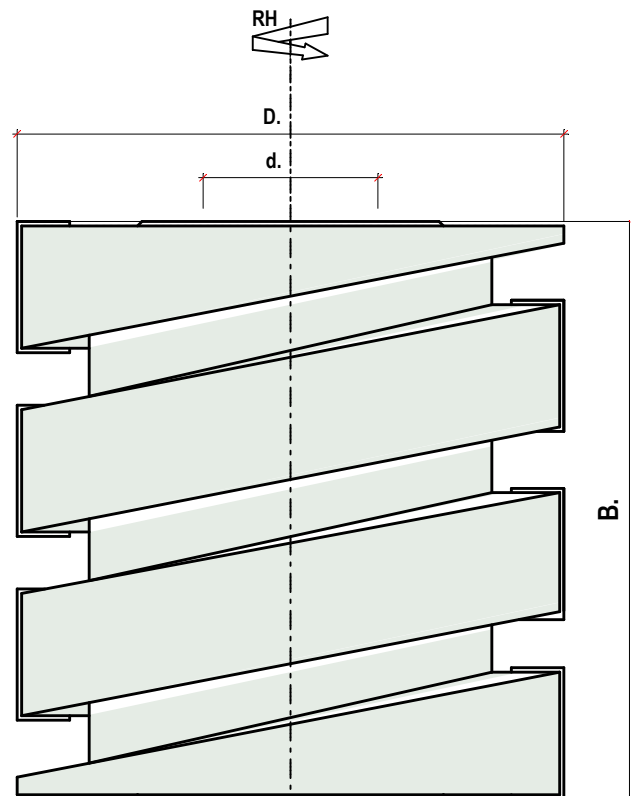
D.140 n max 8000

D.140 mm A RICHIESTA  
ON REQUEST

CORPO IN ACCIAIO A RICHIESTA  
STEEL BODY ON REQUEST

### RICAMBI-SPARE PARTS

Codice nr.	Dimensioni	
000/185	20x12x1.5	STANDARD EQUIPMENT
000/186	30x12x1.5	STANDARD EQUIPMENT
000/185B	20x12x1.5	<b>SMUSSATI = OPTIONAL</b>
000/186B	30x12x1.5	<b>SMUSSATI = OPTIONAL</b>
000/137/16	16x10x12	CUNEO PER 20mm
000/137/26	26x10x12	CUNEO PER 30mm
000/008	M8x15	GRANI
000/032	4mm	CHIAVE ESAG.



# 5/VEF FRESA PER BATTUTA

CUTTER HEAD WITH TOK FOR RABBET



LAVORA IN COMBINAZIONE CON LE TESTE 5/VE.  
TESTA PER BATTUTA SUL PRIMO ALBERO DI  
SCORNICITRICI, RADDRIZZATRICI.

TO USE IN COMBINATION WITH 5/VE.  
ON THE FIRST ARBOR OF MATHING MACHINES  
AND MULTIPLE PLANNING MACHINES.  
WITH TURNOVER KNIVES.

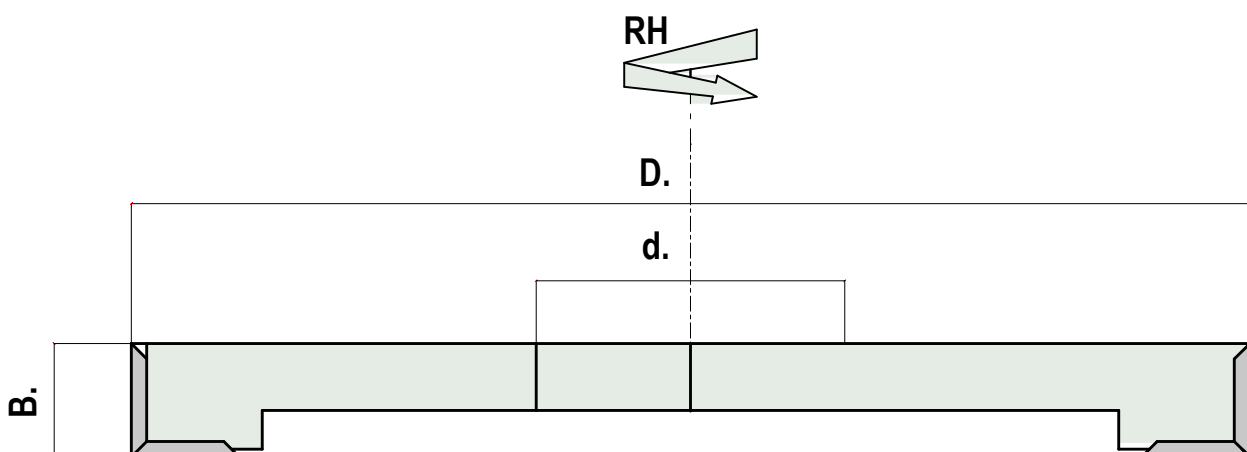
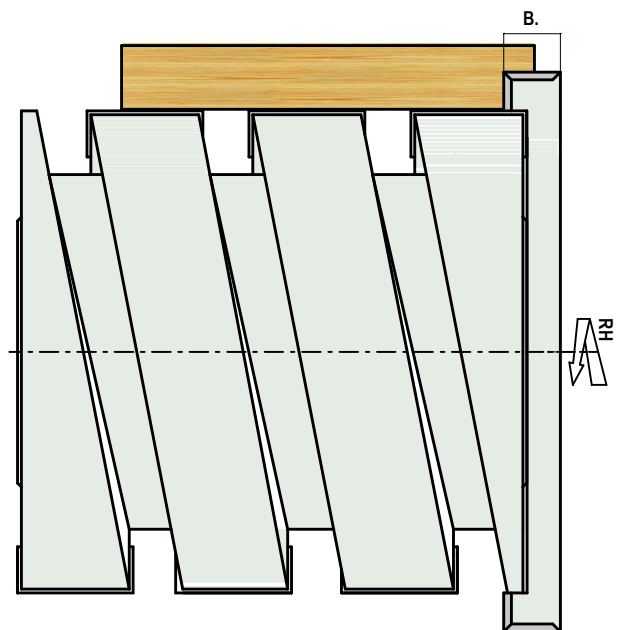
**5/VEF**

**MEC**

Codice nr. HW	D. mm.	B mm.	d. mm.	Z+V
5/VEF 12	120	14.7	35	4+2
5/VEF 14	145	14.7	40	4+2
5/VEF 16	160	14.7	40	4+2

Coltellini di ricambio - Spare part knives

Codice nr.	Dimensioni	
000/180	14x14x2	COLTELLI-KNIVES
000/018	M5x8	VITE -SCREW
000/039	T20	CHIAVE TORX -WRENCH



# 5/VEB COPPIA DI TESTE PER TENONATRICE

## CUTTER HEADS FOR TENONING MACHINES



TESTE CON TAGLIENTI DA 14 mm A SPIRALE.  
PER TENONATURA SU MACCHINE TIPO COLOMBO,  
BERRONE. CORPO IN LEGA LEGGERA.

TO MAKE TENONS ON COLOMBO AND BERRONE  
MACHINES. SPIRAL FORM WITH LIGHT ALLOY AND  
WITH TURNOVER KNIVES IN HW 14x14x2.

### 5/VEB

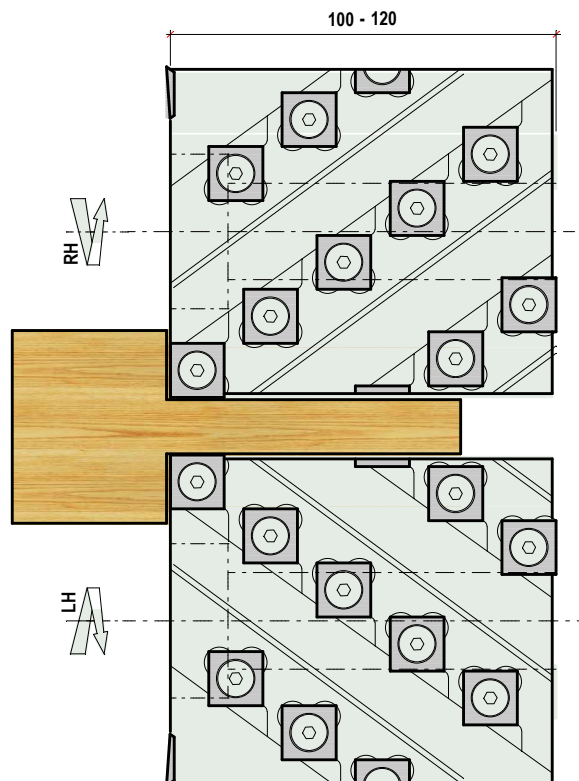
n 9000 - 13000

**MAN**

Codice nr. HW	D. mm.	B mm.	d. mm.	Z+V
5/VEB100 COPPIA DX+SX	86	100	25	30+3
5/VEB120 COPPIA DX+SX	86	120	25	36+3

#### RICAMBI-SPARE PARTS

Codice nr.	Dimensioni	
000/180	14x14x2	COLTELLI -KNIVES
000/018	M5x8	VITE -SCREW
000/039	T20	CHIAVE TORX -WRENCH



### 5/VES

n max 9000

**MEC**

Codice nr. HW	D. mm.	B mm.	d. mm.	Z+V
5/VES 1212	125	120	30-35	36+3
5/VES 1213	125	130	30-35	42+3
5/VES 1215	125	150	30-35	48+3

#### RICAMBI-SPARE PARTS

Codice nr.	Dimensioni	
000/180	14x14x2	COLTELLI -KNIVES
000/018	M5x8	VITE -SCREW
000/039	T20	CHIAVE TORX -WRENCH

### 5VES TESTE SINGOLE EACH CUTTERHEAD

5VES TESTE CON COLTELLI DA 14 mm.  
PER TENONATURA. CORPO IN ALLUMINIO.  
MISURE A RICHIESTA.

SPIRAL FORM WITH LIGHT ALLOY BODY.  
TURNOVER KNIVES IN HW 14x14x2.  
DIMENSIONS ON REQUEST.

# 5/VED TESTE A SPIRALE PER TENONARE

STANDARD SPIRAL HEAD FOR TENONS



TESTE IN LEGA LEGGERA O ACCIAIO. SUDDIVISIONE IRREGOLARE DEI TAGLIENTI MEDIANTE LA FORMA A ELICOIDALE. DA UTILIZZARE PER TENONATURA.

LIGHT ALLOY OR STEEL BODY. IRREGULAR SUDDIVISION OF CUTTING BY SPIRAL FORM. TOOL WITH KNIVES IN HW TO MAKE TENONS.

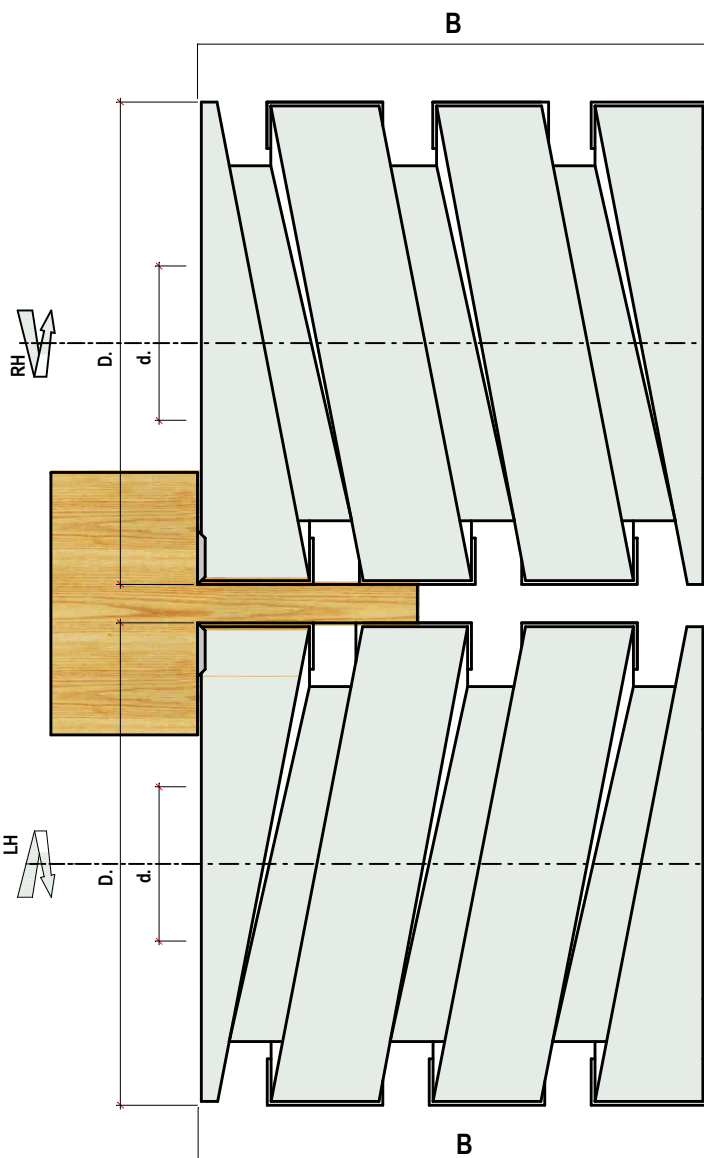
**5/VED**

n max 9000

**MEC**

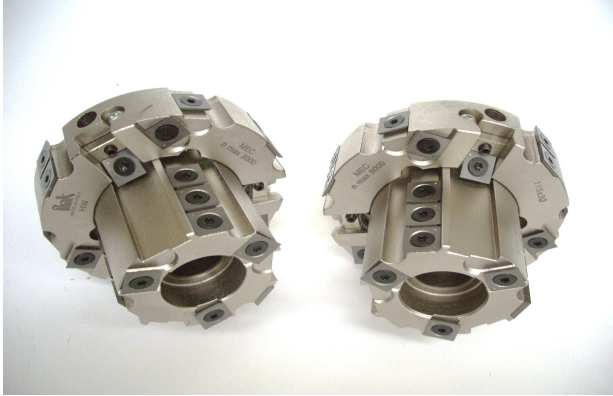
Codice nr. HW	D. mm.	B mm.	d. mm.	Z+V	COLTELLI KNIVES
5/VED 1211	125	110	30-35	18+2	20x12x1.5
5/VED 1213	125	130	30-35	16+2	30x12x1.5
5/VED 1215	125	150	30-35	18+2	30x12x1.5

Codice nr.	Dimensioni	
000/180	14x14x2	INCISORE-SPUR
000/018	M5x8	VITE-SCREW
000/039	T20	CHIAVE TORX-WRENCH
000/185	20x12x1.5	STANDARD EQUIPMENT
000/186	30x12x1.5	STANDARD EQUIPMENT
000/185B	20x12x1.5	<b>SMUSSATI = OPTIONAL</b>
000/186B	30x12x1.5	<b>SMUSSATI = OPTIONAL</b>
000/137/16	16x10x12	CUNEO PER 20mm WEDGE
000/137/26	26x10x12	CUNEO PER 30mm WEDGE
000/008	M8x15	GRANI -SCREWS
000/032	4mm	CHIAVE ESAG-WRENCH



# 5/TB TESTE PER TENONI ARROTONDATI

ADJUSTABLE HEADS FOR ROUNDING TENONING MACHINES



**5/TB1**

n max 9000

**MEC**

Codice nr. HW	D. mm.	B mm.	d. mm.	Z+V +Sp
------------------	-----------	----------	-----------	---------

82	50	30	9+3
130	30		9+3+3

**5/TB1D GRUPPO DESTRO A+B**  
RIGHT SET A+B

**5/TB1S GRUPPO SINISTRO C+D**  
LEFT SET C+D

**5/TB2**

n max 10000

**MEC**

Codice nr. HW	D. mm.	B mm.	d. mm.	Z+V +Sp
------------------	-----------	----------	-----------	---------

70	50	25	9+3
115	30		9+3+3

**5/TB2D GRUPPO DESTRO A+B**  
RIGHT SET A+B

**5/TB2S GRUPPO SINISTRO C+D**  
LEFT SET C+D

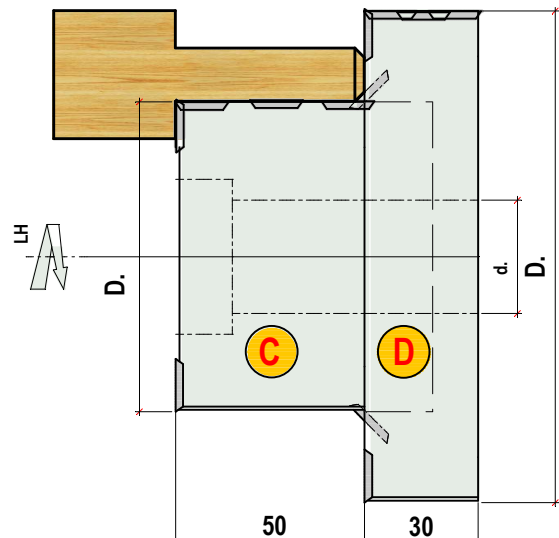
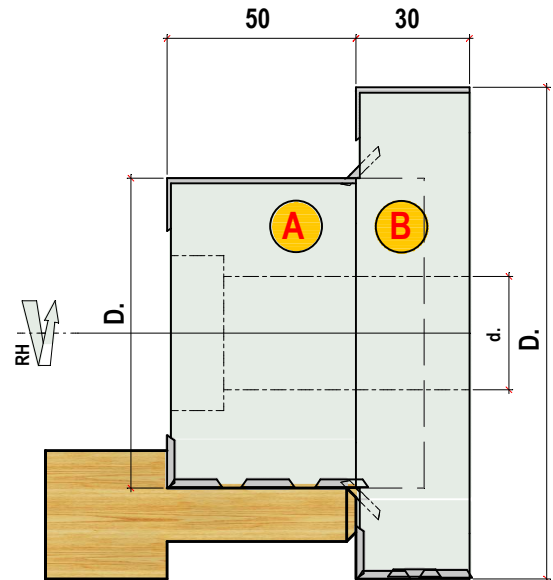
## RICAMBI-SPARE PARTS

Codice nr.	Dimensioni	
000/180	14x14x2	INCISORE-SPUR
000/018	M5x8	VITE - SCREW
000/039	T20	CHIAVE TORX-WRENCH
200/TB		SPIGOL.COMPLETO COMPLETE CHAMFER

PER MACCHINE BALESTRINI, BACCI, PADE.  
PER ESEGUIRE SPINE DOPPIE SU MACCHINE  
TENONATRICI A DOPPIA O SINGOLA TESTA.  
UTENSILE COMPOSTO DA 2 FRESE: UNA  
ESTERNA CHE SCORRE SU UNA CENTRALE  
PER LA REGOLAZIONE IN LUNGHEZZA DEL  
TENONE: DA 5 A 50 mm.

FOR SINGLE OR DOUBLE TENONING MACHINE:  
BALESTRINI, BACCI, PADE.

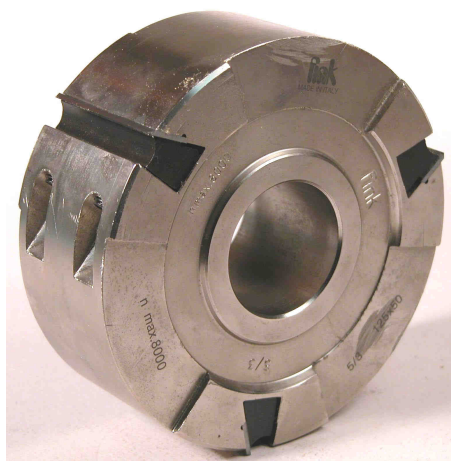
SET WITH 2 CUTTER HEADS IN TURNOVER HW  
KNIVES: ONE EXTERNAL CUTTER B THAT RUNS  
IN THE MIDDLE ONE ADJUSTING THE LENGTH  
OF TENON FROM 5 TO 50 mm.





# 5/Z4 TESTE COMPONENTI

## SECTIONAL PLANING CUTTER HEADS



TESTE CON COLTELLI HW REVERSIBILI ACCOPPIABILI CON SISTEMA ANTI-SLITTAMENTO PER SPIANARE DA 30 mm FINO OLTRE 230 mm.

CUTTER HEADS TO SET TOGETHER, SIDE BY SIDE, TO MAKE ONE CONTINUOUS PLANING CUTTER HEAD FROM 30 mm TO 230 mm AND MORE. EACH SEGMENT WITH 4 HW KNIVES ON A STEEL BODY. CUTTER HEAD ARE STEGGED WITH AN ANTISKID SYSTEM FOR SAFETY PREVENTING MOVEMENTS AGAINST EACH OTHER.

### 5/Z4

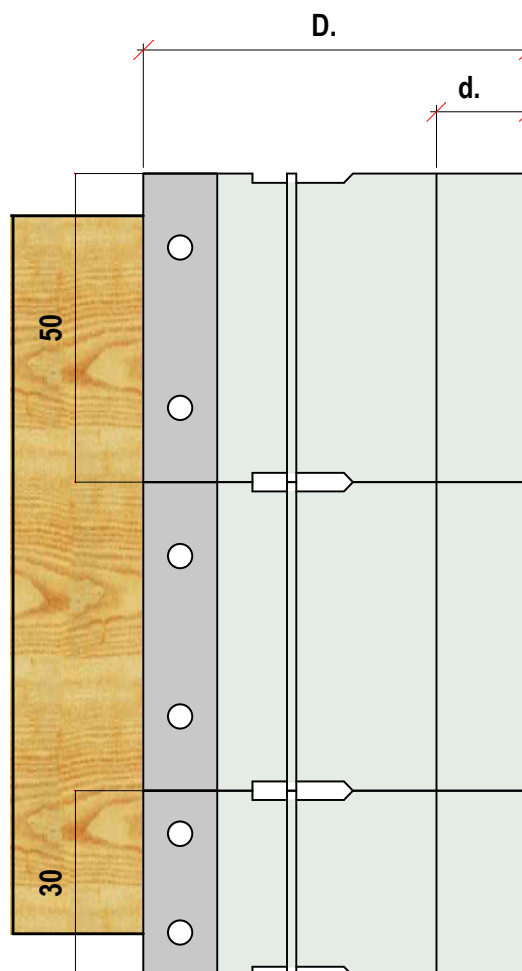
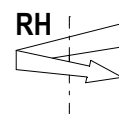
**MEC**

Codice nr. HW	D. mm.	B mm.	d. mm.	Z	
5/Z4 03	125	30	30-35	4	n max 9000
5/Z4 05	125	50	30-35	4	n max 9000
5/Z4 03-14	140	30	30-35	4	n max 8000
5/Z4 05-14	140	50	30-35	4	n max 8000

FORI A RICHIESTA-BORES AVAILABLE-mm 31.75-40-50

### RICAMBI - SPARE PARTS

Codice nr.	Dimensioni	
000/186	30x12x1.5	COLTELLI-KNIVES
000/187	50x12x1.5	COLTELLI-KNIVES
000/154	C28	CUNEO 28mm-WEDGE
000/155	C48	CUNEO 48mm-WEDGE
000/008	M8x15	GRANI-SCREWS
000/032	4 mm	CHIAVE ESAG.-WRENCH



LAVORAZIONE DI SEMIFINITURA POICHE' L'ACCOPIAMENTO NON PUO' AVERE TOLLERANZE INFERIORI A 0.03-0.05 mm  
PLANING AND JOINTING ON FOUR SIDE MOULDERS. TO BE USED ONLY FOR SEMI-FINISHING WORK, AS THE TOLERANCES CAN'T BE LOWER THAN 0.03 - 0.05 mm.

# QB TESTE A BLOCCAGGIO RAPIDO

## QUICKBLOCK HEAD



QUICKBLOCK-TESTA A BLOCCAGGIO RAPIDO PER COLTELLI CENTROLOCK IN HSS O HW. CORPO IN LEGA LEGGERA. COLTELLI RIAFFILABILI. A RICHIESTA DIMENSIONI SPECIALI.

**ANODIZZAZIONE ROSSA A RICHIESTA**

QUICKBLOCK-HEAD FOR REVERSIBLE PLANER KNIVES IN HSS OR HW. SYSTEM CENTROLOCK. LIGHT ALLOY BODY, ON REQUEST SPECIAL SIZES.

**RED FINISH ON REQUEST**

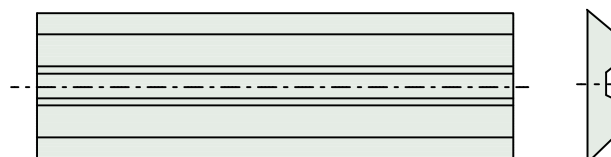
## QB

**MEC**

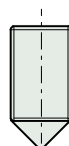
Codice	D. mm.	B mm.	d. mm.	Z	
QB1012	100	120	35	4	n max 10000
QB1019	100	190	35	4	n max 10000
QB1210	125	100	40	4	n max 9000
QB1213	125	130	40	4	n max 9000
QB1215	125	150	40	4	n max 9000
QB1218	125	180	40	4	n max 9000
QB1221	125	210	40	4	n max 9000
QB1223	125	230	40	4	n max 9000
QB1225	125	250	40	4	n max 9000
QB1410	140	100	40-50	4	n max 8000
QB1413	140	130	40-50	4	n max 8000
QB1415	140	150	40-50	4	n max 8000
QB1418	140	180	40-50	4	n max 8000
QB1421	140	210	40-50	4	n max 8000
QB1423	140	230	40-50	4	n max 8000
QB1425	140	250	40-50	4	n max 8000
QB1610	160	100	40-50	6	n max 7000
QB1613	160	130	40-50	6	n max 7000
QB1615	160	150	40-50	6	n max 7000
QB1618	160	180	40-50	6	n max 7000
QB1621	160	210	40-50	6	n max 7000
QB1623	160	230	40-50	6	n max 7000
QB1625	160	250	40-50	6	n max 7000

## COLTELLI DI RICAMBIO-SPARE PART KNIVES COLTELLI HSS o HW-KNIVES HSS or HW

CODICE		
HSS	HW	Dimensioni
HQB100	WQB100	100x16x3
HQB120	WQB120	120x16x3
HQB130	WQB130	130x16x3
HQB150	WQB150	150x16x3
HQB180	WQB180	180x16x3
HQB210	WQB210	210x16x3
HQB230	WQB230	230x16x3
HQB250	WQB250	250x16x3



**CENTROLOCK SYSTEM**



000/012 GRANO CON SFERA M5x12  
GRUB SCREW WITH BALL

## TESTE CON COLTELLI HSS HEADS SUPPLIED WITH HSS KNIVES

# COLTELLI DA PIALLA REVERSIBILI HSS HW

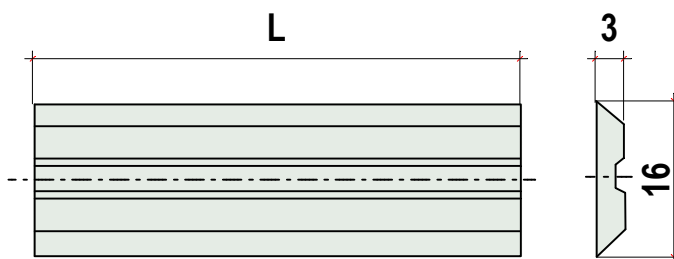
REVERSIBLE HSS AND HW PLANING KNIVES

HSS 18%

## CENTROLOCK SYSTEM

HQB WQB

CODICE		Dimensioni
HSS	HW	L x 16 x 3
HQB100	WQB100	100x16x3
HQB120	WQB120	120x16x3
HQB130	WQB130	130x16x3
HQB150	WQB150	150x16x3
HQB180	WQB180	180x16x3
HQB210	WQB210	210x16x3
HQB230	WQB230	230x16x3
HQB250	WQB250	250x16x3



**HQB = COLTELLI HSS-KNIVES HSS**

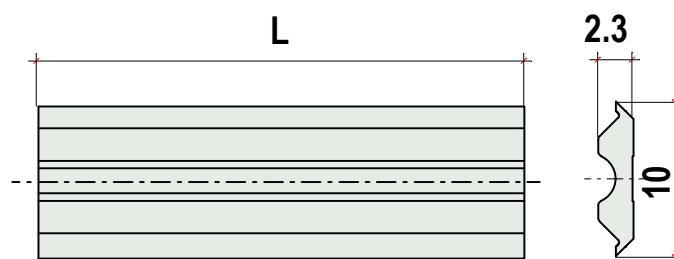
**WQB = COLTELLI HW-KNIVES HW**

MISURE SPECIALI SU RICHIESTA  
SPECIAL SIZES ON REQUEST

## TERSA SYSTEM

HTR WTR

CODICE		Dimensioni
HSS	HW	L x 10 x 2.3
HTR100	WTR100	100x10x2.3
HTR120	WTR120	120x10x2.3
HTR130	WTR130	130x10x2.3
HTR150	WTR150	150x10x2.3
HTR180	WTR180	180x10x2.3
HTR210	WTR210	210x10x2.3
HTR230	WTR230	230x10x2.3
HTR250	WTR250	250x10x2.3



**HTR= COLTELLI HSS-KNIVES HSS**

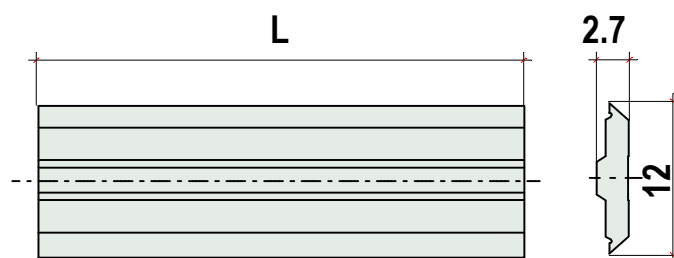
**WTR= COLTELLI HW-KNIVES HW**

MISURE SPECIALI SU RICHIESTA  
SPECIAL SIZES ON REQUEST

## CENTROFIX SYSTEM

HCX WCX

CODICE		Dimensioni
HSS	HW	L x 12 x 2.7
HCX100	WCX100	100x12x2.7
HCX120	WCX120	120x12x2.7
HCX130	WCX130	130x12x2.7
HCX150	WCX150	150x12x2.7
HCX180	WCX180	180x12x2.7
HCX210	WCX210	210x12x2.7
HCX230	WCX230	230x12x2.7
HCX250	WCX250	250x12x2.7



**HCX= COLTELLI HSS-KNIVES HSS**

**WCX= COLTELLI HW-KNIVES HW**

MISURE SPECIALI SU RICHIESTA  
SPECIAL SIZES ON REQUEST

# QP TESTE PIALLA E PROFILI

## QUICKPROFIL HEAD



QUICKPROFIL TESTA A BLOCCAGGIO RAPIDO PER COLTELLI CENTROLOCK E COLTELLI PER PROFILI IN HSS O HW. CORPO IN LEGA LEGGERA.

QUICKPROFIL-HEAD FOR REVERSIBLR PLANER KNIVES CENTROLOCK SYSTEM AND HSS OR HW PROFILED KNIVES .LIGHT ALLOY BODY.

QP

MEC

Codice	D. mm.	B mm.	d. mm.	Z	n max	9000
QP1210	125	100	40	4 +2	n max	9000
QP1213	125	130	40	4 +2	n max	9000
QP1215	125	150	40	4 +2	n max	9000
QP1218	125	180	40	4 +2	n max	9000
QP1221	125	210	40	4 +2	n max	9000
QP1223	125	230	40	4 +2	n max	9000
QP1225	125	250	40	4 +2	n max	9000

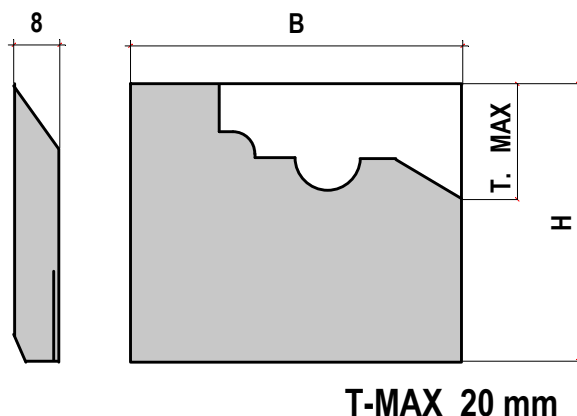
COLTELLI DI RICAMBIO-SPARE PART KNIVES  
COLTELLI HSS o HW-KNIVES HSS or HW

CODICE	HSS	HW	Dimensioni
HQB100		WQB100	100x16x3
HQB120		WQB120	120x16x3
HQB130		WQB130	130x16x3
HQB150		WQB150	150x16x3
HQB180		WQB180	180x16x3
HQB210		WQB210	210x16x3
HQB230		WQB230	230x16x3
HQB250		WQB250	250x16x3

TESTE CON COLTELLI HSS  
HEADS SUPPLIED WITH HSS KNIVES



CENTROLOCK SYSTEM



000/012 GRANO CON SFERA M5x12  
GRUB SCREW WITH BALL

# POWERLOCK HSK 85

CHUCKS POWERLOCK HSK 85



ALBERO PORTAUTENSILI CON  
ATTACCO HSK 85 W

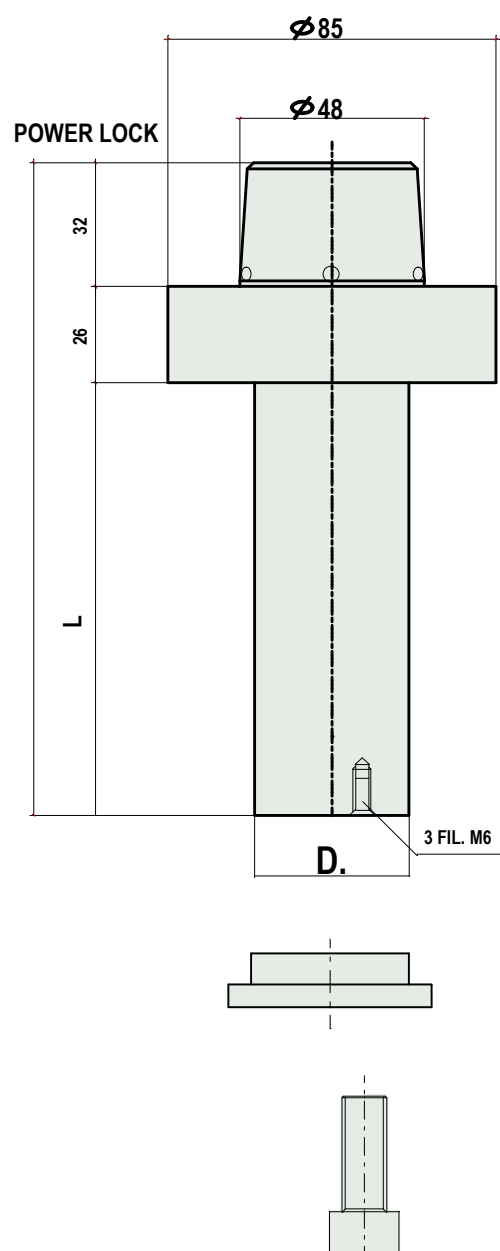
TOOL'S HOLDER WITH HSK 85W

**PWA**

**MEC**

Codice nr.	D. mm.	L mm.
PWA 30 060	30	60
PWA 30 080	30	80
PWA 30 100	30	100
PWA 30 130	30	130
PWA 35 060	35	60
PWA 35 080	35	80
PWA 35 100	35	100
PWA 35 130	35	130
PWA 35 150	35	150
PWA 35 180	35	180
PWA 40 060	40	60
PWA 40 080	40	80
PWA 40 100	40	100
PWA 40 130	40	130
PWA 40 150	40	150
PWA 40 180	40	180
PWA 40 210	40	210

DIMENSIONI SPECIALI A RICHIESTA  
SPECIAL DIMENSIONS ON REQUEST



# POWERLOCK PW-SP

CHUCKS POWERLOCK HSK 85 PW-SP



TESTE PER PIALLARE CON COLTELLI HW REVERSIBILI.  
DISPONIBILITA' DI VARIE MISURE PER TUTTE  
LE MACCHINE. CORPO IN LEGA LEGGERA

**A RICHIESTA POSSONO ESSERE EQUIPAGGIATE  
CON COLTELLI SMUSSATI PER MIGLIORARE  
LA FINITURA. (000/180S)**

PLANING HEAD WITH HW REVERSIBLE KNIVES.  
AVAILABLE FOR DIFFERENT MACHINES.  
DIFFERENT SIZES OF DIAMETER AND LENGHT.  
LIGHT ALLOY BODY

**ON REQUEST RADIUS KNIVES FOR  
A BETTER FINISHING. (000/180S)**

**PWSP**

**MEC**

Codice nr.	D. mm.	B. mm.	Z	coltelli knives	max rpm
PWSP084	93	84		14x14x2	n max 12000
PWSP104	93	104	36	14x14x2	n max 12000
PWSP134	93	134	42	14x14x2	n max 12000
PWSP160	93	160	48	14x14x2	n max 12000
PWSP180	93	180	54	14x14x2	n max 12000
PWSP210	93	210	72	14x14x2	n max 12000
PWSP230	93	230	78	14x14x2	n max 12000

**NELL'ORDINE INDICARE:**

**R PER ROTAZIONE DESTRA (VEDI DISEGNO)**

**L PER ROTAZIONE SINISTRA**

**ON THE ORDER SIGN:**

**R RIGHT ROTATION (SEE DRAWING)**

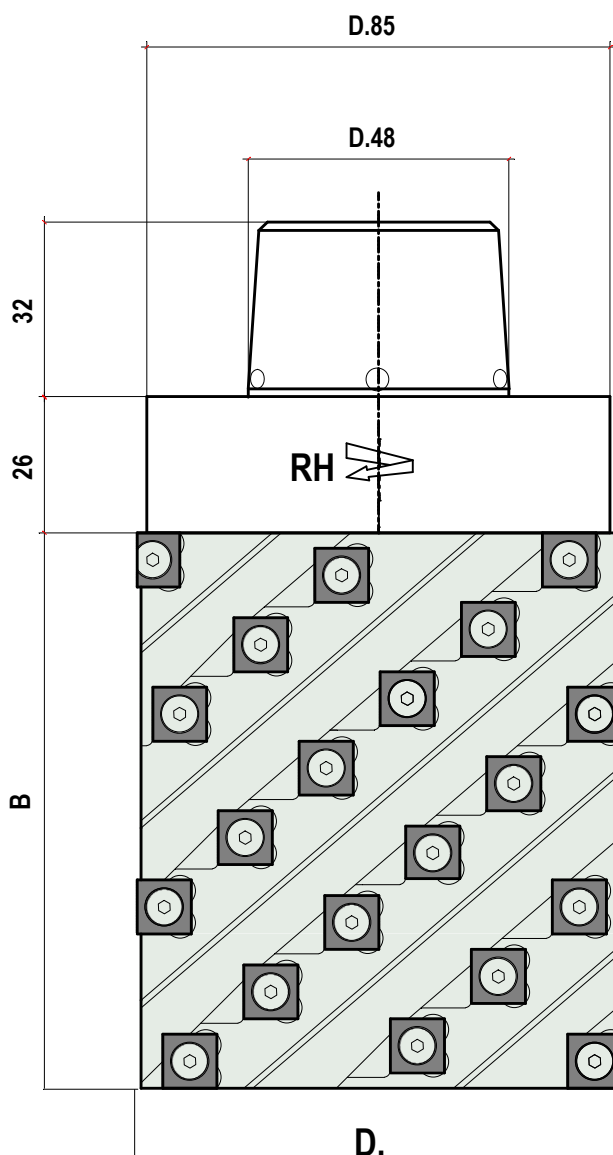
**L LEFT ROTATION**

**DIMENSIONI SPECIALI A RICHIESTA  
SPECIAL DIMENSIONS ON REQUEST**

**RICAMBI-SPARE PARTS**

Codice nr.	Dimensioni	
000/180	14x14x2	STANDARD KNIFE
000/180S	14x14x2	<b>COLTELLO SMUSSATO</b>
000/018	M5x8	VITE -SCREW
000/039	T20	CHIAVE TORX -WRENCH

**PER SGROSSATURA  
FOR ROUGHING**



# POWERLOCK PW-VE

CHUCKS POWERLOCK HSK 85 PW-VE



CORPO IN LEGA LEGGERA. TAGLIO FRAZIONATO PER: AUMENTARE L'AVANZAMENTO, DIMINUIRE LA RUMOROSITA' E LA POTENZA. PER SGROSSARE, CONTORNARE, COPIARE. A RICHIESTA POSSONO ESSERE EQUIPAGGIATE CON COLTELLI SMUSSATI PER MIGLIORARE LA FINITURA.

LIGHT ALLOY BODY. SPIRAL PLANING HEAD WITH STANDARD KNIVES. ON REQUEST RADIUS TC TURNOVER KNIVES FOR A BETTER FINISHING.

**PWVE**

**MEC**

Codice nr.	D. mm.	B. mm.	Z	coltelli knives	max rpm
PWVE110	100	110	18	20x12x1.5	n max 10000
PWVE120	100	120	14	30x12x1.5	n max 10000
PWVE130	100	130	16	30x12x1.5	n max 10000
PWVE150	100	150	18	30x12x1.5	n max 10000
PWVE184	100	184	24	30x12x1.5	n max 10000
PWVE232	100	232	30	30x12x1.5	n max 10000

NELL'ORDINE INDICARE:

R PER ROTAZIONE DESTRA (VEDI DISEGNO)

L PER ROTAZIONE SINISTRA

ON THE ORDER SIGN:

R RIGHT ROTATION (SEE DRAWING)

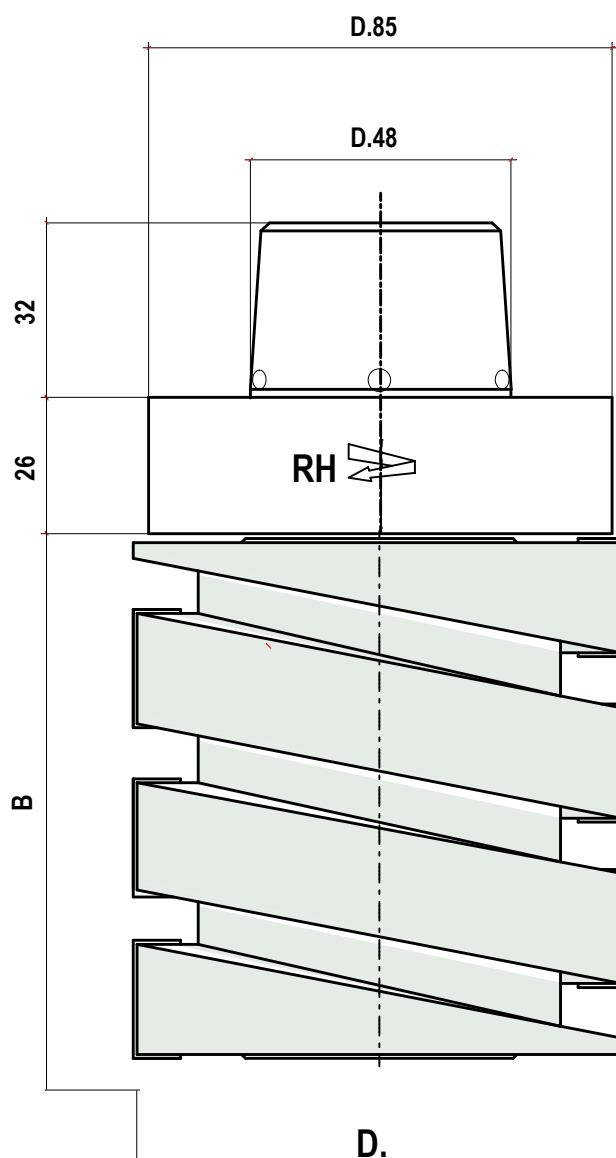
L LEFT ROTATION

DIMENSIONI SPECIALI A RICHIESTA  
SPECIAL DIMENSIONS ON REQUEST

## RICAMBI-SPARE PARTS

Codice nr.	Dimensioni	
000/185	20x12x1.5	STANDARD EQUIPMENT
000/186	30x12x1.5	STANDARD EQUIPMENT
000/185B	20x12x1.5	SMUSSATI = OPTIONAL
000/186B	30x12x1.5	SMUSSATI = OPTIONAL
000/137/16	16x10x12	CUNEO PER 20mm
000/137/26	26x10x12	CUNEO PER 30mm
000/008	M8x15	GRANI
000/032	4mm	CHIAVE ESAG.

**PER SGROSSATURA  
FOR ROUGHING**



# POWERLOCK PW-QB

CHUCKS POWERLOCK HSK 85 PW-QB



QUICKBLOCK-TESTA A BLOCCAGGIO RAPIDO PER COLTELLI CENTROLOCK IN HSS O HW. CORPO IN LEGA LEGGERA. COLTELLI RIAFFILABILI. A RICHIESTA DIMENSIONI SPECIALI.

QUICKBLOCK-HEAD FOR REVERSIBLE PLANER KNIVES IN HSS OR HW. SYSTEM CENTROLOCK. LIGHT ALLOY BODY, ON REQUEST SPECIAL SIZES.

**CORPO IN ACCIAIO A RICHIESTA**  
STEEL BODY ON REQUEST

**PWQB**

**MEC**

Codice	D. mm.	B mm.	Z	max rpm
--------	-----------	----------	---	---------

PWBQ100	93	100	4	n max 12000
PWQB130	93	130	4	n max 12000
PWQB150	93	150	4	n max 12000
PWQB180	93	180	4	n max 12000
PWQB230	93	230	4	n max 12000

NELL'ORDINE INDICARE:

R PER ROTAZIONE DESTRA (VEDI DISEGNO)

L PER ROTAZIONE SINISTRA

ON THE ORDER SIGN:

R RIGHT ROTATION (SEE DRAWING)

L LEFT ROTATION

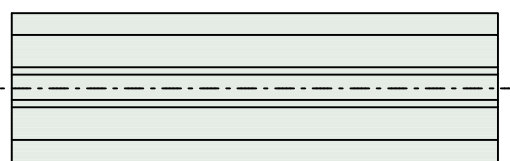
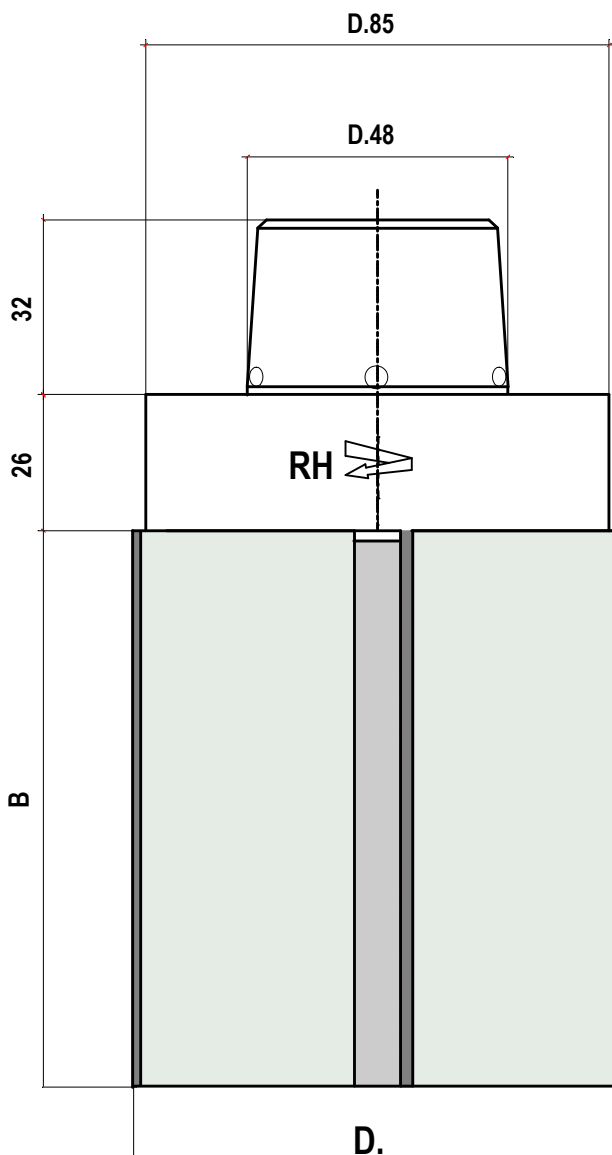
**DIMENSIONI SPECIALI A RICHIESTA**  
SPECIAL DIMENSIONS ON REQUEST

COLTELLI DI RICAMBIO-SPARE PART KNIVES

COLTELLI HSS o HW-KNIVES HSS or HW

CODICE		
HSS	HW	Dimensioni

HQB100	WQB100	100x16x3
HQB120	WQB120	120x16x3
HQB130	WQB130	130x16x3
HQB150	WQB150	150x16x3
HQB180	WQB180	180x16x3
HQB210	WQB210	210x16x3
HQB230	WQB230	230x16x3
HQB250	WQB250	250x16x3



**CENTROLOCK SYSTEM**



# POWERLOCK PW-124

CHUCKS POWERLOCK HSK 85 PW-124



**PW124**

**MEC**

Codice	D. mm.	B mm.	Z	max rpm
PW124 040	90	40	2	n max 12000
PW124 060	90	60	2	n max 12000
PW124 080	90	80	2	n max 12000
PW124 100	90	100	2	n max 12000
PW124 130	90	130	2	n max 12000
PW124 150	90	150	2	n max 12000
PW124 180	90	180	2	n max 12000
PW124 230	90	230	2	n max 12000

NELL'ORDINE INDICARE:

R PER ROTAZIONE DESTRA (VEDI DISEGNO)

L PER ROTAZIONE SINISTRA

ON THE ORDER SIGN:

R RIGHT ROTATION (SEE DRAWING)

L LEFT ROTATION

**DIMENSIONI SPECIALI A RICHIESTA  
SPECIAL DIMENSIONS ON REQUEST**

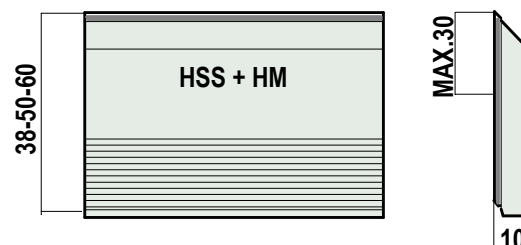
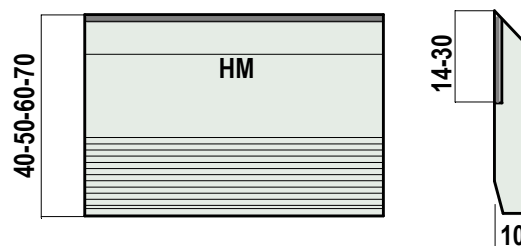
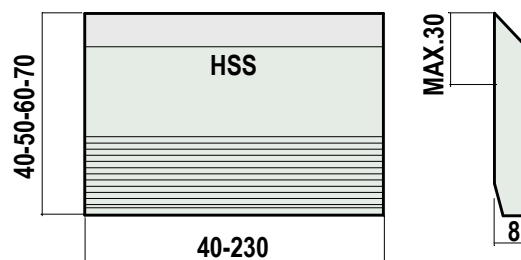
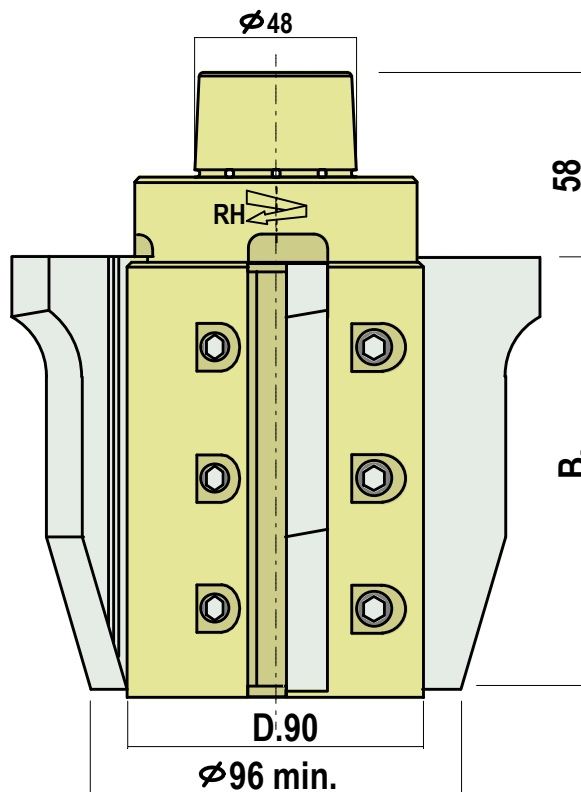
**RICAMBI-SPARE PARTS**

Codice nr.	Dimensioni	
000/008C	M10x25	GRANI -SCREWS
000/034	5 mm	CHIAVE ESAGONALE

CUNEI DI BLOCCAGGIO VEDI CATALOGO RICAMBI  
FOR WEDGES SEE ACCESSORIES CATALOGUE

TESTA PER COLTELLI ZIGRINATI IN HSS.COLTELLI NON COMPRESI CON LA TESTA.REGOLAZIONE DEL DIAMETRO MEDIANTE DENTATURA PER COMPENSARE L'AFFILATURA. PASSO DENTATURA =1.587 mm

SAFETY PROFILE CUTTERBLOCK WITH PRECISION GROUND SERRATIONS ON BACK.HSS KNIVES NOT INCLUDED WITH THE HEAD





**fink**

FINK s.r.l.  
Via G.Giusti 15  
20900 Monza - MB  
tel: +39 - 039 - 386961  
tel: +39 - 039 - 386962  
fax: +39 - 039 - 361458  
e-mail: [fink@finktools.com](mailto:fink@finktools.com)  
[www.finktools.com](http://www.finktools.com)

