

4

DOOR MACHINING, PANEL RAISING



Door casing

94



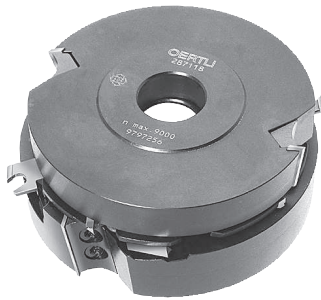
Door profiles

96



Panel raising

104



Cutter set with reversible knives for door casing and door panels

Application: For cutting of door casing, including groove for seal strips, decorative- and rebate lining • Spindle moulding machines

Design: Tungsten carbide reversible knives • With one-sided shear cut angle • Tool set in 3-parts with spacers for basic height 20mm • Tool body in steel • MAN (manual feed)

Cutter set, 3-parts

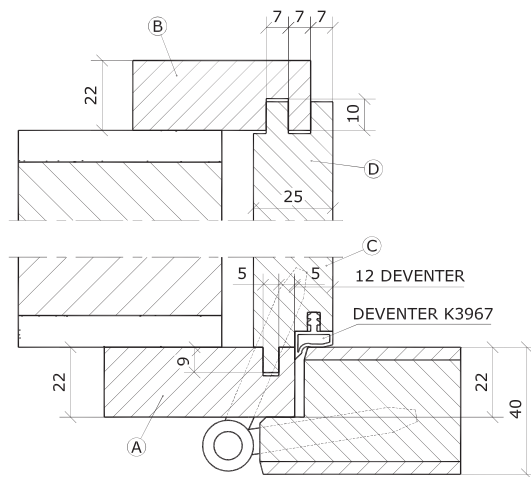
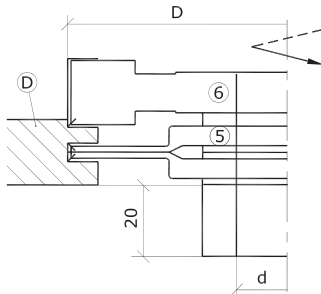
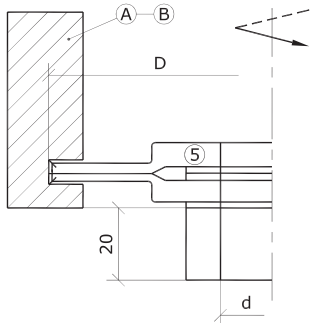
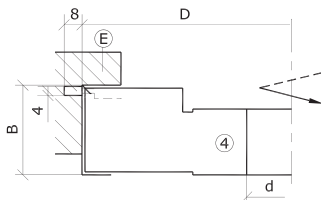
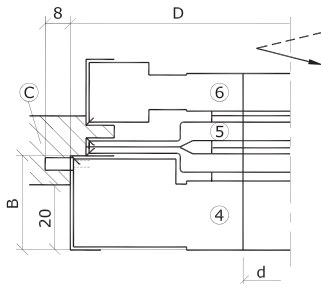
Art. Nr.	D	d	Z	n	Pos.
287115	140	30	2	5'900-10'200	4,5,6

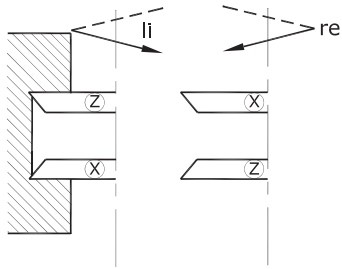
Single cutter

Art. Nr.	D	B	d	Z	n	Pos.	Index
287113	140	32	30	6 (2+2+2)	5'500-10'400	4	1
287117	130	4-7	30	4 (2+2)	5'900-10'200	5	2
287121	130	20	30	4 (2+2)	5'900-10'200	6	3

Spare parts

Art.Nr.	Index
216009 Reversible knives OERTLI, Format, B=14.0 h=14.0 a=2.0 Qual=HW	3
216013 Reversible knives OERTLI, Format, B=16.0 h=16.0 a=3.0 Qual=HW	1
216564 Reversible knives OERTLI, Format, B=3.8 h=14.9 Typ=Z Qual=HW	2
216566 Reversible knives OERTLI, Format, B=3.8 h=14.9 Typ=X Qual=HW	2
217020 Reversible knives OERTLI, straight, B=20 h=8 a=1.5 Qual=HW	3
217030 Reversible knives OERTLI, straight, B=32 h=8 a=1.5 Qual=HW	1
855264 Grooving knives OERTLI, B=4.0 T max=12 Qual=HW	1
851179 Eccentric cam, D=14 B=2.6 SW=4	2
950908 Gib, L=17.2 Typ=+15°	3
950917 Gib, L=29.5 Typ=+20°	1
851032 Screws, M=5 D=8.5 L=11 Typ=Torx 20	1
851038 Screws, M=5 D=8 L=6.3 Typ=Torx 20	3
851100 Screws, M=6 D=10.5 L=12 Typ=ISK 5	1
851347 Screws, M=6 D=9.5 L=20 Typ=Torx 20	1, 3
850063 Shim set for grooving knives, B=2x0.1/0.5/1.0/2.0 + 4x0.2	1





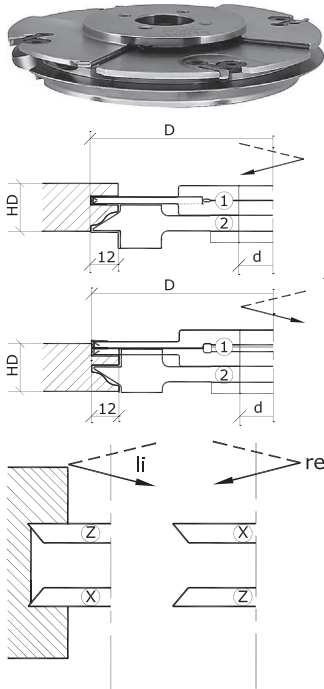


Fig. 1

Combi-Door profile cutter sets, profile depth 12mm

Application: For cutting of profile and counter profile on frame components, furniture doors or wall- and ceiling panels • Spindle moulding machines

Design: Tungsten carbide profile- and reversible knives • Profile cutter with shear cut angle • 4 different profile knives useable in the same cutter body • Profile not self-clamping • Tool body in steel • MAN (manual feed)

Cutter set, 2-parts, bore 30

Art. Nr.	D	HD	d	Z	Pos.	n	Fig.
276700	160	21-24	30	2	1+2	4'800-10'000	2
276701	160	21-24	30	2	1+2	4'800-10'000	3
276702	160	21-24	30	2	1+2	4'800-10'000	4
276703	160	21-24	30	2	1+2	4'800-10'000	5

Cutter set, 2-parts, bore 40

Art. Nr.	D	HD	d	Z	Pos.	n	Fig.
276704	160	21-24	40	2	1+2	4'800-10'000	2
276705	160	21-24	40	2	1+2	4'800-10'000	3
276706	160	21-24	40	2	1+2	4'800-10'000	4
276707	160	21-24	40	2	1+2	4'800-10'000	5

Cutter set, 2-parts, bore 50

Art. Nr.	D	HD	d	Z	Pos.	n	Fig.
276708	160	21-24	50	2	1+2	4'800-10'000	2
276709	160	21-24	50	2	1+2	4'800-10'000	3
276710	160	21-24	50	2	1+2	4'800-10'000	4
276711	160	21-24	50	2	1+2	4'800-10'000	5

Single cutter

Art. Nr.	D	B	d	Z	Pos.	n	Fig.	Index
276712	160	19	30	2	2	4'800-10'000	1	1
276715	160	4-7	30	4 (2+2)	1	4'800-10'000	1	2
276713	160	19	40	2	2	4'800-10'000	3	3
276716	160	4-7	40	4 (2+2)	1	4'800-10'000	1	4
276714	160	19	50	2	2	4'800-10'000	5	5
276717	160	4-7	50	4 (2+2)	1	4'800-10'000	1	6

Spare parts

Art.Nr.		Index
150827	Profile knives, B=20 Typ=276.15 Qual=HW	1, 3, 5
150828	Profile knives, B=20 Typ=276.5 Qual=HW	1, 3, 5
150829	Profile knives, B=20 Typ=276.6 Qual=HW	1, 3, 5
150830	Profile knives, B=20 Typ=276.7 Qual=HW	1, 3, 5
216564	Reversible knives OERTLI, Format, B=3.8 h=14.9 Typ=Z Qual=HW	2, 4, 6
216566	Reversible knives OERTLI, Format, B=3.8 h=14.9 Typ=X Qual=HW	2, 4, 6
851179	Eccentric cam, D=14 B=2.6 SW=4	2, 4, 6
950312	Gib, L=18	1, 3, 5
851590	Set screws, M=6 L=16 Typ=ISK 3	1, 3, 5

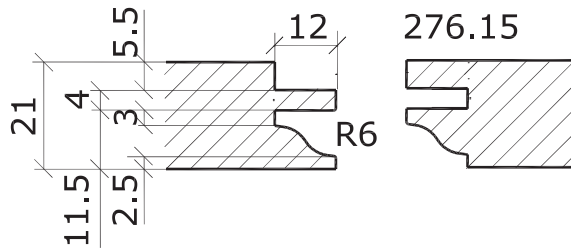


Fig. 2

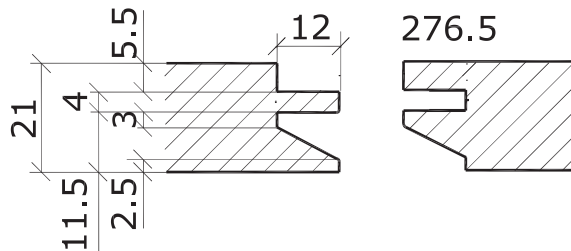


Fig. 3

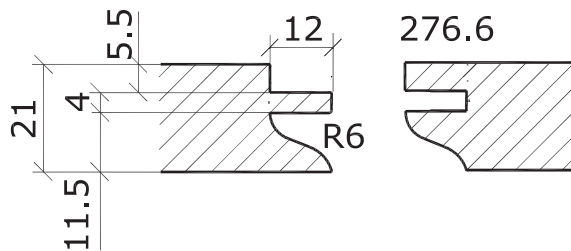


Fig. 4

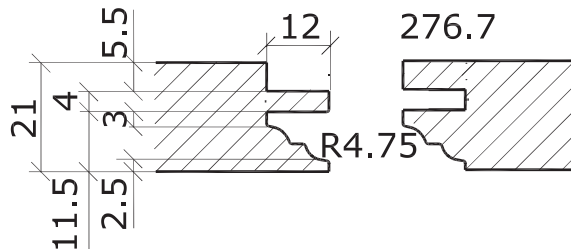
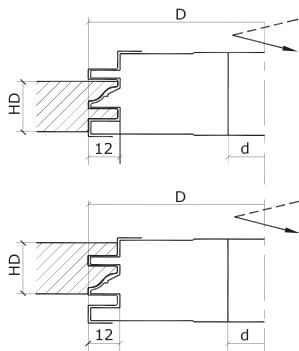
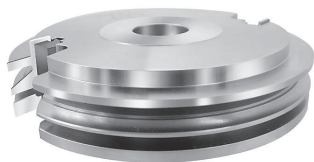


Fig. 5



Door profile cutter sets, profile depth 12mm

Application: For cutting of profile and counter profile on frame components, furniture doors or wall- and ceiling panels • Spindle moulding machines

Design: Tungsten carbide profile knives • Profiled on one side, straight cut • 4 different profile knives useable in the same cutter body • Profile not self-clamping • Tool body in steel • MAN (manual feed)

Bore 30

Art. Nr.	D	HD	d	Z	n	Fig.	Index
276200	160	19-21	30	2	5'500-8'300	1	1
276201	160	19-21	30	2	5'500-8'300	1	2
276202	160	19-21	30	2	5'500-8'300	2	3
276203	160	19-21	30	2	5'500-8'300	3	4
276204	160	19-21	30	2	5'500-8'300	4	5

Bore 40

Art. Nr.	D	HD	d	Z	n	Fig.	Index
276195	160	19-21	40	2	5'500-8'300		6
276196	160	19-21	40	2	5'500-8'300	1	7
276197	160	19-21	40	2	5'500-8'300	2	8
276198	160	19-21	40	2	5'500-8'300	3	9
276199	160	19-21	40	2	5'500-8'300	4	10

Bore 50

Art. Nr.	D	HD	d	Z	n	Fig.	Index
276205	160	19-21	50	2	5'500-8'300		11
276206	160	19-21	50	2	5'500-8'300	1	12
276207	160	19-21	50	2	5'500-8'300	2	13
276208	160	19-21	50	2	5'500-8'300	3	14
276209	160	19-21	50	2	5'500-8'300	4	15

Spare parts

Art.Nr.		Index
193214	Profile knives, B=35 Typ=276.21 Qual=HW	1-15
193215	Profile knives, B=35 Typ=276.22 Qual=HW	1-15
193216	Profile knives, B=35 Typ=276.23 Qual=HW	1-15
193217	Profile knives, B=35 Typ=276.24 Qual=HW	1-15
950379	Clamping wedge	1-15
950387	Gib, L=35	1-15
851341	Set screws, M=6 L=18 Typ=Torx 15	1-15

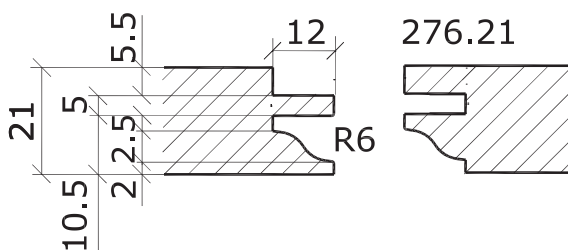


Fig. 1

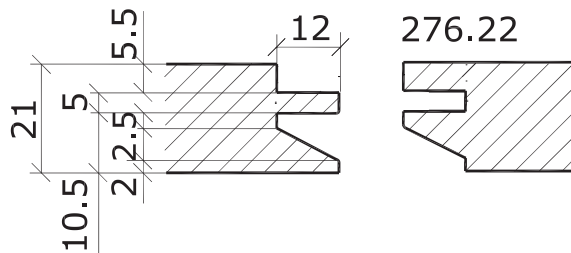


Fig. 2

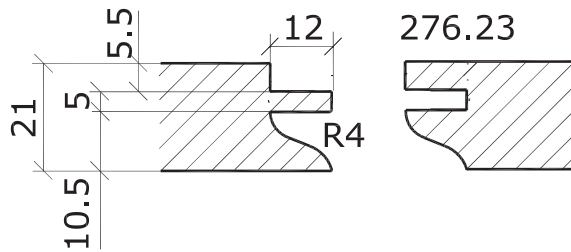


Fig. 3

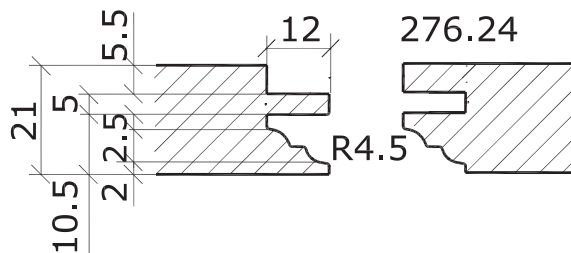
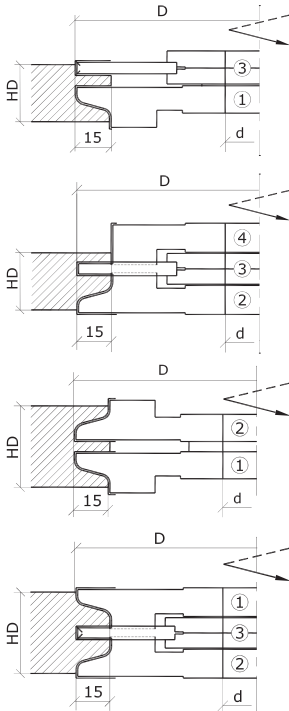
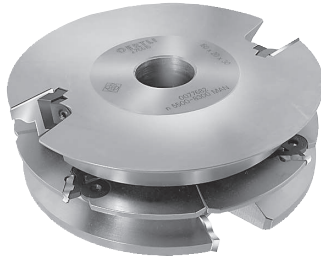


Fig. 4



Combi-Door profile cutter sets, profile depth 15mm

Application: For cutting of profile and counter profile on frame components, furniture doors or wall- and ceiling panels • Spindle moulding machines

Design: Tungsten carbide profile- and reversible knives • Profile cutter with shear cut angle • 4 different profile knives useable in the same cutter body • Profile not self-clamping • Tool body in steel • MAN (manual feed)

Cutter set, 4-parts, bore 30

Art. Nr.	D	HD	d	Z	n	Fig.
276690	160	28-33	30	2	5'900-8'300	1
276692	160	27-32	30	2	5'900-8'300	2
276694	160	27-32	30	2	5'900-8'300	3
276696	160	27-32	30	2	5'900-8'300	4

Cutter set, 4-parts, bore 40

Art. Nr.	D	HD	d	Z	n	Fig.
276737	160	28-33	40	2	5'900-8'300	1
276738	160	27-32	40	2	5'900-8'300	2
276739	160	27-32	40	2	5'900-8'300	3
276740	160	27-32	40	2	5'900-8'300	4

Cutter set, 4-parts, bore 50

Art. Nr.	D	HD	d	Z	n	Fig.
276741	160	28-33	50	2	5'900-8'300	1
276742	160	27-32	50	2	5'900-8'300	2
276743	160	27-32	50	2	5'900-8'300	3
276744	160	27-32	50	2	5'900-8'300	4

Cutter set, 3-parts, bore 30

Art. Nr.	D	HD	d	Z	n	Fig.
276691	160	38-43	30	2	5'500-8'300	5
276693	160	36-41	30	2	5'500-8'300	6
276695	160	36-41	30	2	5'500-8'300	7
276697	160	36-41	30	2	5'500-8'300	8

Cutter set, 3-parts, bore 40

Art. Nr.	D	HD	d	Z	n	Fig.
276750	160	38-43	40	2	5'500-8'300	5
276751	160	36-41	40	2	5'500-8'300	6
276752	160	36-41	40	2	5'500-8'300	7
276753	160	36-41	40	2	5'500-8'300	8

Cutter set, 3-parts, bore 50

Art. Nr.	D	HD	d	Z	n	Fig.
276754	160	38-43	50	2	5'500-8'300	5
276755	160	36-41	50	2	5'500-8'300	6
276756	160	36-41	50	2	5'500-8'300	7
276757	160	36-41	50	2	5'500-8'300	8

Single cutter, bore 30

Art. Nr.	D	B	d	Z	n	Pos.	Index
276745	130	20	30	2	5'900-12'400	4	1
276687	160	19	30	2	5'500-8'300	1	2
276688	160	19	30	2	5'500-8'300	2	3
276686	160	6-11.5	30	8 (2+4+2)	4'800-8'300	3	4

Single cutter, bore 40

Art. Nr.	D	B	d	Z	n	Pos.	Index
276746	130	20	40	2	5'900-12'400	4	5
276758	160	19	40	2	5'500-8'300	1	6
276759	160	19	40	2	5'500-8'300	2	7
276748	160	6-11.5	40	8 (2+4+2)	4'800-8'300	3	8

Single cutter, bore 50

Art. Nr.	D	B	d	Z	n	Pos.	Index
276747	130	20	50	2	5'900-12'400	4	9
276760	160	19	50	2	5'500-8'300	1	10
276761	160	19	50	2	5'500-8'300	2	11
276749	160	6-11.5	50	8 (2+4+2)	4'800-8'300	3	12

Spare parts

Art.Nr.		Index
204049	Profile knives, B=20 Typ=276.10 Qual=HW	2, 6, 10
204050	Profile knives, B=20 Typ=276.10 Qual=HW	3, 7, 11
204051	Profile knives, B=20 Typ=276.12 Qual=HW	2, 6, 10
204052	Profile knives, B=20 Typ=276.12 Qual=HW	3, 7, 11
204053	Profile knives, B=20 Typ=276.11 Qual=HW	2, 6, 10
204054	Profile knives, B=20 Typ=276.11 Qual=HW	3, 7, 11
204062	Profile knives, B=20 Typ=276.16 Qual=HW	2, 6, 10
204063	Profile knives, B=20 Typ=276.16 Qual=HW	3, 7, 11
216009	Reversible knives OERTLI, Format, B=14.0 h=14.0 a=2.0 Qual=HW	4, 8, 12
216086	Reversible knives OERTLI, Format, B=5.7 h=14.9 a=3.2 Qual=HW	4, 8, 12
217020	Reversible knives OERTLI, straight, B=20 h=8 a=1.5 Qual=HW	1, 5, 9
851179	Eccentric cam, D=14 B=2.6 SW=4	4, 8, 12
950379	Clamping wedge	2, 3, 6, 7, 10, 11
950384	Gib, L=20	2, 3, 6, 7, 10, 11
950908	Gib, L=17.2 Typ=+15°	1, 5, 9
851038	Screws, M=5 D=8 L=6.3 Typ=Torx 20	4, 8, 12
851341	Set screws, M=6 L=18 Typ=Torx 15	2, 3, 6, 7, 10, 11
851347	Screws, M=6 D=9.5 L=20 Typ=Torx 20	1, 5, 9

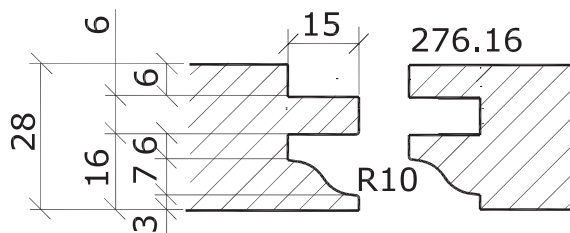


Fig. 1

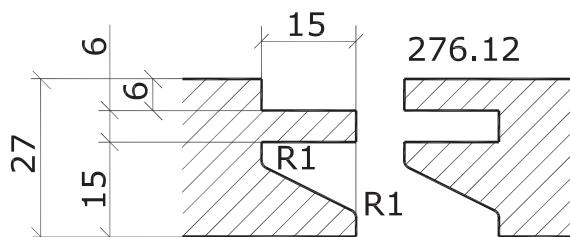


Fig. 2

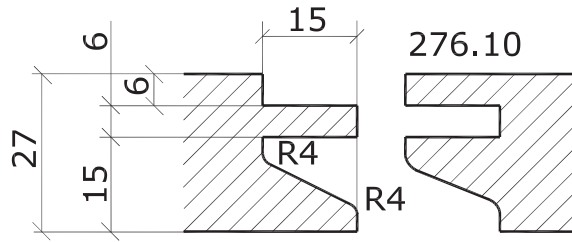


Fig. 3

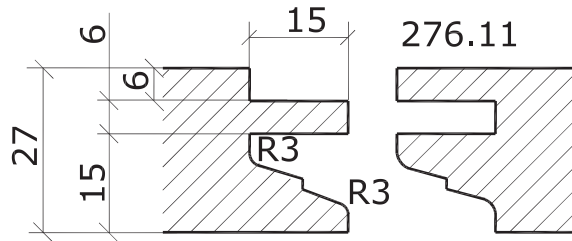


Fig. 4

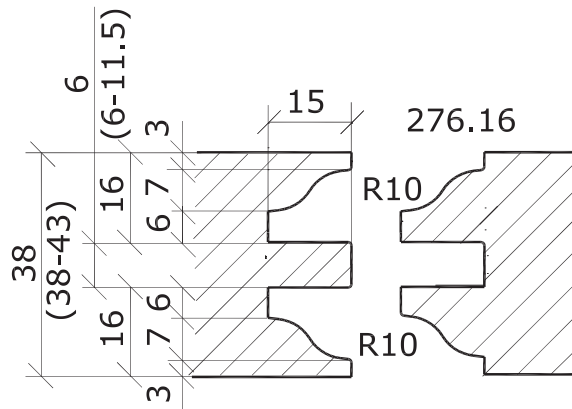


Fig. 5

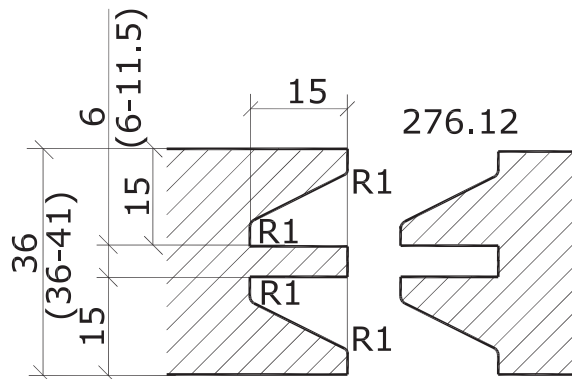


Fig. 6

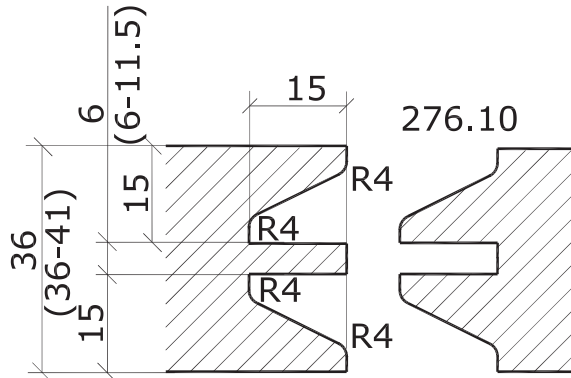


Fig. 7

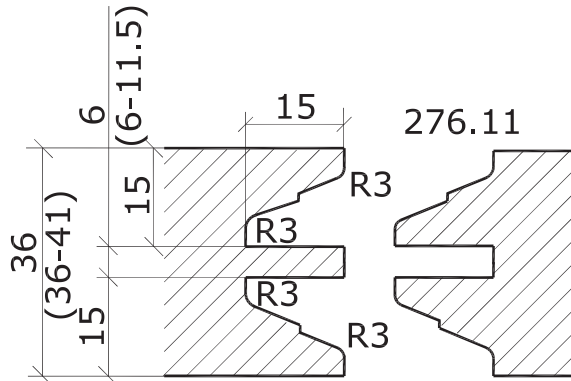
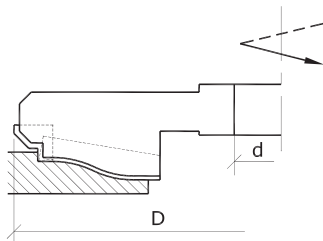
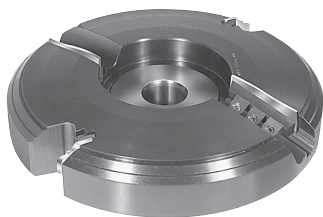


Fig. 8



Panel raising cutters with profile knives CLASSIC

Application: For cutting of raised panels in solid wood along- and across grain, MDF-panels, etc. • Spindle moulding machines

Design: Tungsten carbide profile knives • Panel raising knife with shear cut, periphery knife straight cut • 3 panel raising knives and 5 periphery knives useable in the same cutter body. All combinations are possible • Basic equipment without knives • Tool body in steel • MAN (manual feed)

Tool body without knives

Art. Nr.	D	d	Z	n	Index
572009	217	30	4 (2+2)	3'900-6'100	1
572010	217	40	4 (2+2)	3'900-6'100	2
572011	217	50	4 (2+2)	3'900-6'100	3

Raised panel knife

Art. Nr.	Fig.
203483	1
203481	2
203482	3

Periphery knife

Art. Nr.	Fig.
203491	4
203487	5
203490	6
203488	7
203489	8

Spare parts

Art.Nr.		Index
950379	Clamping wedge	1-3
950384	Gib, L=20	1-3
950389	Gib, L=55	1-3
851341	Set screws, M=6 L=18 Typ=Torx 15	1-3

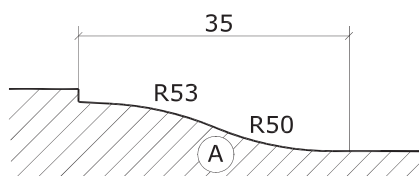


Fig. 1

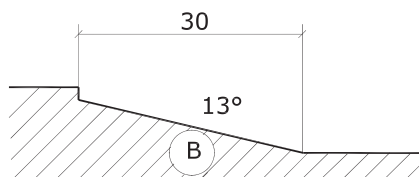


Fig. 2

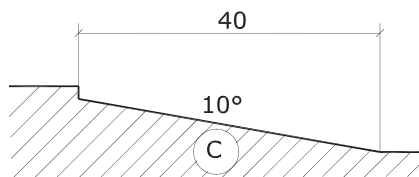


Fig. 3

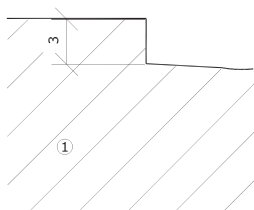


Fig. 4

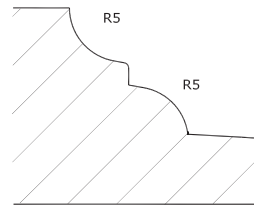


Fig. 5

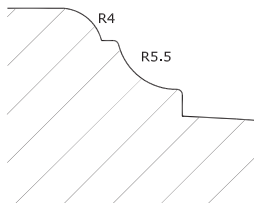


Fig. 6

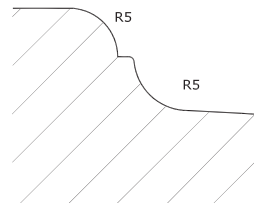


Fig. 7

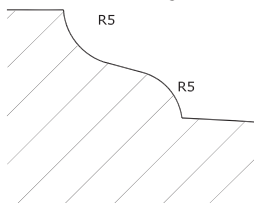
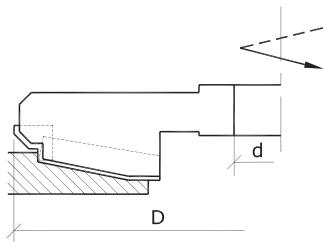
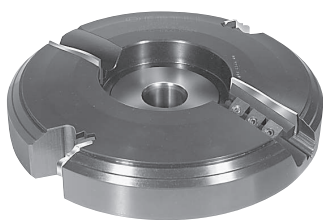


Fig. 8



Panel raising cutters with profile knives MODERNE

Application: For cutting of raised panels in solid wood along- and across grain, MDF-panels, etc. • Spindle moulding machines

Design: Tungsten carbide profile knives • Panel raising knife with shear cut, periphery knife straight cut • 3 panel raising knives and 5 periphery knives useable in the same cutter body. All combinations are possible • Basic equipment without knives • Tool body in steel • MAN (manual feed)

Tool body without knives

Art. Nr.	D	d	Z	n	Index
572029	217	30	4 (2+2)	3'900-6'100	1
572030	217	40	4 (2+2)	3'900-6'100	2
572031	217	50	4 (2+2)	3'900-6'100	3

Raised panel knife

Art. Nr.	Fig.
203485	1
203486	2
203484	3

Periphery knife

Art. Nr.	Fig.
203491	4
203487	5
203490	6
203488	7
203489	8

Spare parts

Art.Nr.		Index
950379	Clamping wedge	1-3
950384	Gib, L=20	1-3
950389	Gib, L=55	1-3
851341	Set screws, M=6 L=18 Typ=Torx 15	1-3

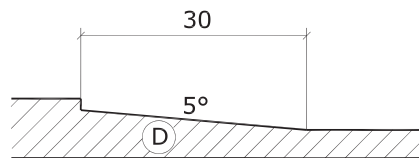


Fig. 1

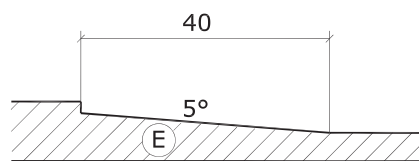


Fig. 2

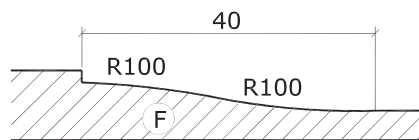


Fig. 3

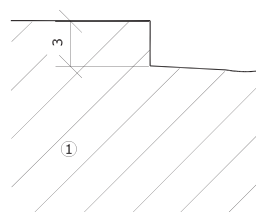


Fig. 4

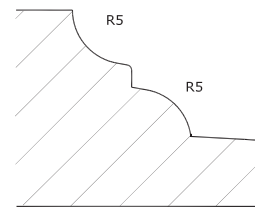


Fig. 5

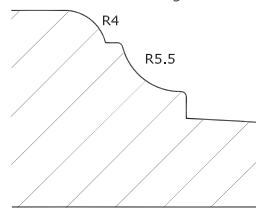


Fig. 6

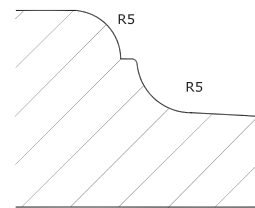


Fig. 7

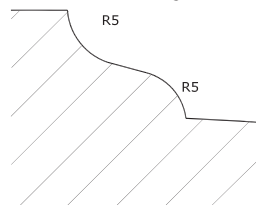


Fig. 8