

fiok

MADE IN ITALY



**FRESE HW SALDATE
WELDED HW TOOLS**

CATALOGO

46 - A

2016

CONDIZIONI GENERALI DI VENDITA

ORDINI

Le ordinazioni si intendono accettate alle condizioni indicate nella conferma d'ordine e non potranno essere annullate né parzialmente né totalmente dal Committente. In mancanza di conferma d'ordine valgono le nostre condizioni generali di vendita.

CONSEGNE

I termini di consegna pattuiti decorrono dalla data di definizione di tutti i dettagli inerenti l'ordinazione e saranno nel possibile rispettati. Eventuali ritardi, conseguenze di disguidi indipendenti dalla nostra volontà, non potranno essere motivo di annullamento o di richieste di indennizzi di nessun genere.

SPEDIZIONI

La merce viene resa franco nostro stabilimento e spedita, salvo accordi diversi, con il mezzo più vantaggioso. La merce viaggerà sempre a rischio e pericolo del committente. Eventuali assicurazioni dovranno essere esplicitamente richieste e saranno fatturate al costo. L'imballo è sempre a carico del committente ed addebitato al costo.

GARANZIA

Tutti i nostri utensili sono sottoposti ad accurati controlli e sono completamente garantiti. Si declina qualsiasi responsabilità per danni diretti ed indiretti dovuti all'utilizzo improprio dei materiali, dal logorio, da danni causati dal trasporto, da modifiche effettuate senza la nostra approvazione od alla non osservanza delle norme e delle condizioni di impiego indicate su utensili, manuali o cataloghi e sito internet.

RESTITUZIONI E RECLAMI

Non si accettano restituzioni della merce, a nessun titolo, se non preventivamente autorizzate da FINK srl. I reclami per merce sbagliata o difettosa dovranno essere inviati alla nostra sede esclusivamente tramite documentazione scritta indicante il difetto riscontrato, entro 8 giorni dal ricevimento della merce.

PREZZI

I prezzi si intendono I.V.A. esclusa, che sarà applicata con l'aliquota vigente al momento della spedizione. La merce si intende fornita franco nostra fabbrica e l'imballo è a carico del committente. Salvo accordi particolari comprovati dalla conferma d'ordine, vengono applicati i prezzi di listino in vigore alla data dell'ordine della merce. Fori speciali a partire da € 8,00.

PAGAMENTI

Gli importi delle fatture vanno pagati per intero alle scadenze stabilite e direttamente a FINK srl. Non sono ammessi arrotondamenti o trattenute arbitrarie. Tutte le spese accessorie sono a carico del cliente. Il mancato rispetto dei termini di pagamento autorizza FINK srl, al recupero di ogni spesa accessoria, agli interessi maturati secondo quanto previsto dal D.Lgs 9/10/2002 n.231, ci riserviamo inoltre il diritto alla sospensione di eventuali ordini in corso. La merce rimane proprietà di FINK srl fino al pagamento totale della fornitura e delle eventuali spese accessorie.

DIRITTI D'AUTORE

Tutti i diritti sono riservati a norma di legge. FINK srl fa divieto a chiunque di copiare, riprodurre testi, disegni, illustrazioni in modo totale o parziale, senza il suo consenso scritto.

FORO COMPETENTE

Per qualsiasi controversia, il foro competente è esclusivamente quello di Monza. I contratti, anche se stipulati con acquirenti stranieri o per materiali forniti all'estero sono regolati dalla legislazione Italiana.

SPECIFICAZIONI E DISEGNI

I prodotti FINK srl sono soggetti a continue innovazioni; ci si riserva il diritto di apportare le modifiche ed i miglioramenti ritenuti opportuni senza incorrere in alcun tipo di obbligazione per quelli già venduti.

GENERAL TERMS OF SALE

ORDERS

Orders are accepted with the conditions indicated in the order confirmation and may neither be totally nor partially cancelled by the customer. Without an order confirmation are valid our general terms of sale.

DELIVERY TERMS

The delivery dates are only indicative and will be respected as much as possible and start from the date when all the details concerning the order are defined. Possible delays, due to unexpected events, that do not depend from our, will cannot be reason of claim, cancellation of the order or request for any compensation

SHIPMENTS

Goods are delivered ex-factory and with the most advantageous forwarding agent, except different agreements with the buyer. Freight costs and risks will be at the charge of the buyer. Shipment will be covered by insurance guarantee only if expressly requested by the buyer and charged at cost. No claim can be entertained in case of goods short delivered, damaged or lost in transit. Packing is at the charge of the buyer and debited at the real cost.

GUARANTEE

All our tools are carefully controlled and guaranteed. The guarantee does not include damages caused during the transport, defects due to wear, wrong or improper use, non maintenance, handlings or modifications made without our approval, the failure to comply with the safety rules and the instructions of use indicated on the tools, catalogues, guides or web-site.

RETURNS AND CLAIMS

Fink does not accept returns of the goods if not previously authorized. Claims for wrong or defective goods have to be communicated only in writing within 8 days from the receipt of the goods mentioning the description of the defect.

PRICES

Prices are considered ex-factory without V.A.T., which will be imposed with the share in force during the invoicing. The packing is at the charge of the buyer. Except particular agreements stated in the order confirmation we will apply the price-list in force at the moment of the order. Extra cost for special bores from € 8,00.

PAYMENTS

The invoices amounts have to be fully paid, on stated maturity, to Fink S.r.l. All extra charges are at the customer expense. Payments may not be rounded down or reduced under any circumstances. If the terms of payment are not honoured Fink S.r.l. can interrupt new supplies and debit all the due interests as well as any additional expense. The delivery terms will be automatically extended. The passing of property of the products supplied by Fink S.r.l. to the customer will take place after complete settlement of the invoices.

RESERVED OWNERSHIP RIGHTS

All rights are reserved in accordance with the law and international agreements. This catalogue not be reproduced or copied (even in part) without prior and written authorization on the part of Fink S.r.l.

PLACE OF JURISDICTION

For any legal matter the place of jurisdiction is Monza. The contracts, even if defined with foreign Buyers or for goods to be sent abroad, are regulated by the Italian legislation.

SPECIFICATION AND DRAWINGS

Our tools are subject to continuous innovations, we reserve the right to make improvements and modifications that we consider appropriate without incurring in any kind of duty for the products already sold.

THE PRICE-LIST 2011 CANCEL AND REPLACES THE PREVIOUS ONE.

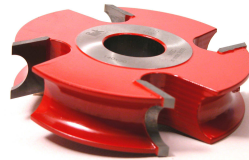


FRESE IN HW SALDATO-WELDED HW TOOLS



FRESE SPECIALI A DISEGNO
SPECIAL CUTTERS ON DRAWING

Art. 1 - 2 - 3



FRESA PER MEZZI TONDI
HALF ROUND CUTTERS

Art. 52



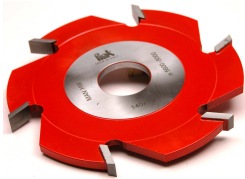
FRESE MULTIPROFILO
MULTIPROFILE CUTTER SET

art. 4 - 5 - 6 - 7 - 9



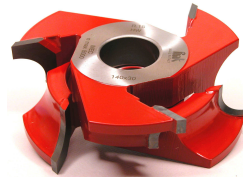
FRESA PER MEZZI TONDI
HALF ROUND CUTTERS

Art. 53



FRESE PER INCASTRI FISSI
GROOVING CUTTERS

Art. 14



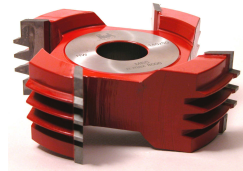
FRESA REGOL.PER MEZZI TONDI
ADJUSTABLE HALF ROUND CUTTER

Art. 52R



FRESE PER INCASTRI REGOL.
ADJUSTABLE GROOVING CUTTERS

Art. 23



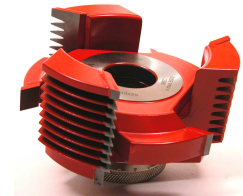
FRESE PER GIUNZIONI
GLUE JOINT CUTTERBLOCK

Art. 56 - 59



FRESE PER ANTINE E PORTONCINI
COUNTER PROFILE CUTTER SET

Art. 42 - 42D - 43 - 43D



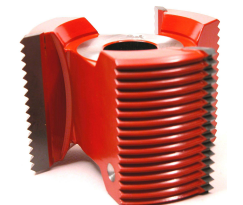
FRESA REGOL.PER GIUNZIONI
ADJUSTABLE GLUE JOINT CUTTERBLOCK

Art. 60



FRESE PER QUARTI DI TONDO
QUARTER ROUND CUTTERS

Art. 48



FRESA PER GIUNZIONI
GLUE JOINT CUTTERBLOCK

Art. 61



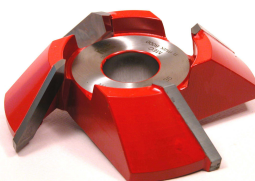
FRESE PER QUARTI DI TONDO
QUARTER ROUND CUTTER SET

Art. 49



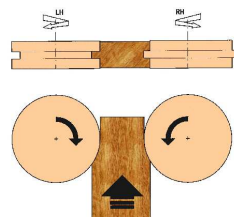
FRESA PER GIUNZIONI LUNGHE
DEEP JOINT CUTTERBLOCK

Art. 62



FRESA PER SMUSSI 45°
BEVEL CUTTER 45°

Art. 50



FRESE PER PERLINE E PARQUET
TONGUE AND GROOVE CUTTERS

Art. 80

CATALOGO 46 A 2016

1 - 2 - 3 FRESE IN HW SALDATO A DISEGNO

SPECIAL PROFILE CUTTERS

001

MAN MEC

Codice	D.	B.	d.	Z
HW	mm.	mm.	mm.	
001 H 1420	140	20	30-35-40-50	4
001 H 1430	140	30	30-35-40-50	4
001 H 1440	140	40	30-35-40-50	4
001 H 1450	140	50	30-35-40-50	4
001 H 1460	140	60	30-35-40-50	4
001 H 1470	140	70	30-35-40-50	4
001 H 1480	140	80	30-35-40-50	4
001 H 1620	160	20	30-35-40-50	4
001 H 1630	160	30	30-35-40-50	4
001 H 1640	160	40	30-35-40-50	4
001 H 1650	160	50	30-35-40-50	4
001 H 1660	160	60	30-35-40-50	4

002

MAN MEC

Codice	D.	B.	d.	Z
HW	mm.	mm.	mm.	
002 H 1420	140	20	30-35-40-50	4
002 H 1430	140	30	30-35-40-50	4
002 H 1440	140	40	30-35-40-50	4
002 H 1450	140	50	30-35-40-50	4
002 H 1460	140	60	30-35-40-50	4
002 H 1470	140	70	30-35-40-50	4
002 H 1480	140	80	30-35-40-50	4
002 H 1620	160	20	30-35-40-50	4
002 H 1630	160	30	30-35-40-50	4
002 H 1640	160	40	30-35-40-50	4
002 H 1650	160	50	30-35-40-50	4
002 H 1660	160	60	30-35-40-50	4

003

MAN MEC

Codice	D.	B.	d.	Z
HW	mm.	mm.	mm.	
003 H 1420	140	20	30-35-40-50	4
003 H 1430	140	30	30-35-40-50	4
003 H 1440	140	40	30-35-40-50	4
003 H 1450	140	50	30-35-40-50	4
003 H 1460	140	60	30-35-40-50	4
003 H 1470	140	70	30-35-40-50	4
003 H 1480	140	80	30-35-40-50	4
003 H 1620	160	20	30-35-40-50	4
003 H 1630	160	30	30-35-40-50	4
003 H 1640	160	40	30-35-40-50	4
003 H 1650	160	50	30-35-40-50	4
003 H 1660	160	60	30-35-40-50	4
003 H 2020	200	20	30-35-40-50	4
003 H 2030	200	30	30-35-40-50	4
003 H 2040	200	40	30-35-40-50	4
003 H 2050	200	50	30-35-40-50	4
003 H 2060	200	60	30-35-40-50	4

FRESE IN HW SALDATO SPECIALI A DISEGNO

TABELLA 1 PROFILI SEMPLICI

TABELLA 2 PROFILI MEDI

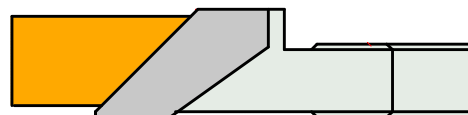
TABELLA 3 PROFILI COMPLESSI

CUTTERS IN HW WELDED ON DRAWING

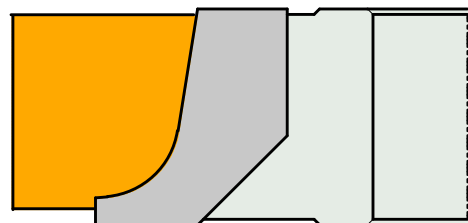
TABLE 1 SIMPLE PROFILES

TABLE 2 MEDIUM PROFILES

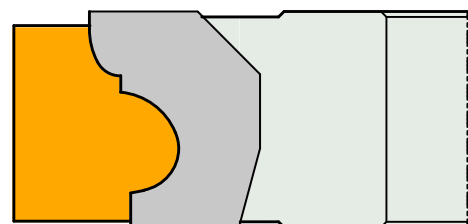
TABLE 3 COMPLICATED PROFILES



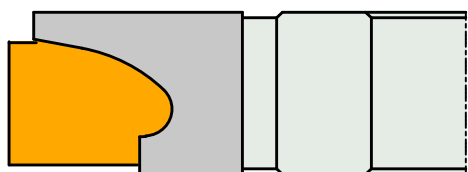
TAB. 1



TAB. 2



TAB. 3



TAB. 3

4 FRESE PER MULTIPROFILI

MULTIPROFILE CUTTERSET OF 4 CUTTERBLOCK



SET DI 4 FRESE (A+B+C+D) IN HW SALDATE
LE FRESE NON LAVORANO ACCOPPIATE MA PERMETTONO
DI OTTENERE DIVERSI PROFILI CON PIU' PASSATE

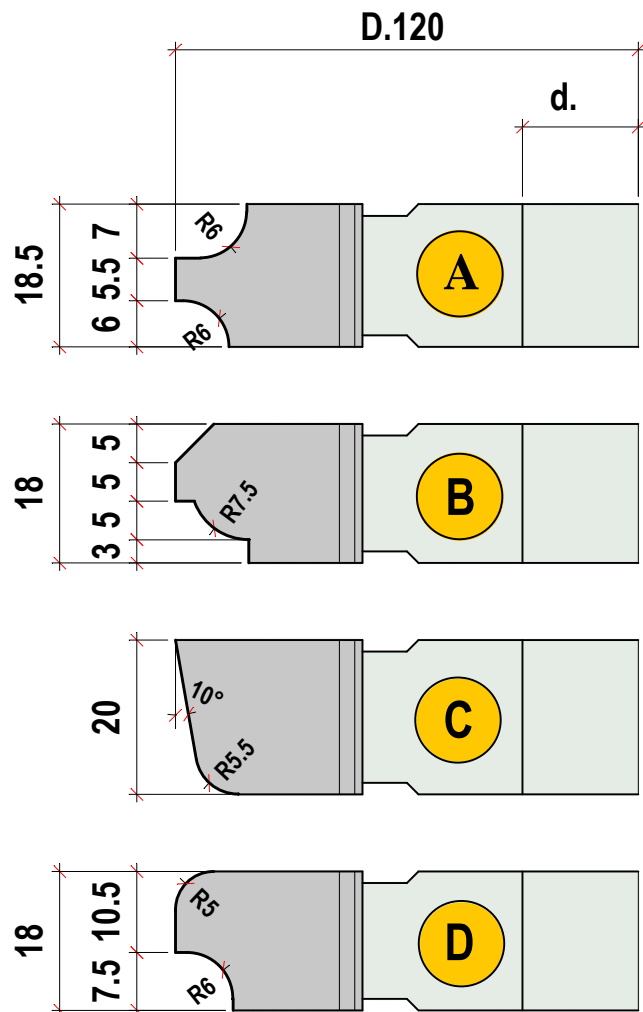
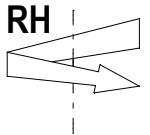
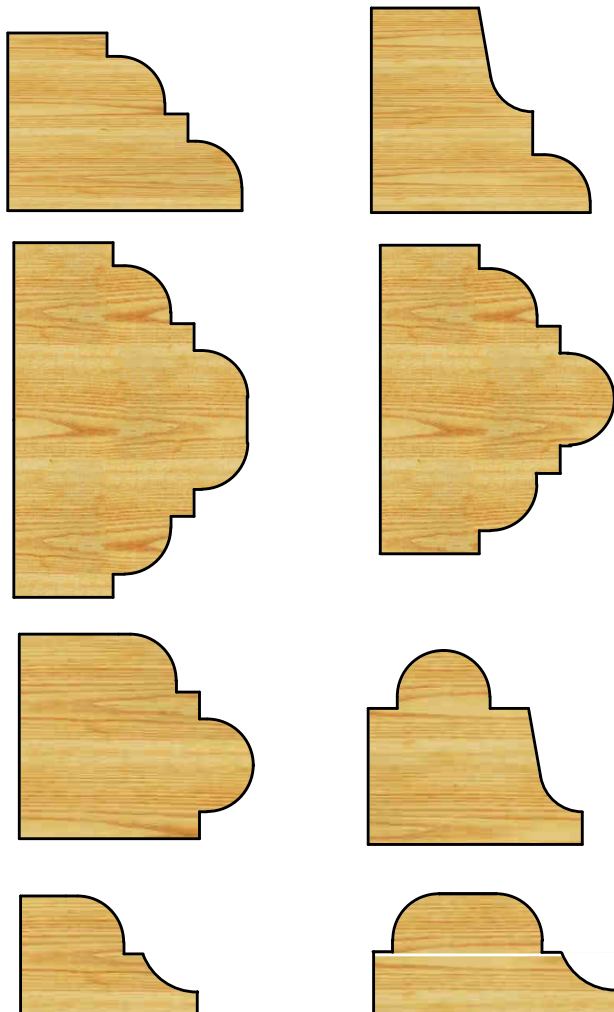
SET OF 4 CUTTERBLOCK IN HW WELDED A,B,C,D
CUTTERHEADS DON'T WORK FITTED TOGETHER
BUT IT IS POSSIBLE TO REALIZE MANY PROFILES
WITH MORE PASSES.

4

MAN

Codice nr. HW	Fresa	D. mm.	B. mm.	d. mm.	Z	n rpm
004 H	GRUPPO FRESE- SET:A+B+C+D					
	A	120	18.5	30-35	2	6400-9200
	B	120	18	30-35	2	6400-9200
	C	120	20	30-35	2	6400-9200
	D	120	18	30-35	2	6400-9200

FORI A RICHIESTA-BORES AVAILABLE-mm 31.75



5 FRESE PER MULTIPROFILI

MULTIPROFILE CUTTERSET OF 5 CUTTERBLOCK



SET DI 5 FRESE (A+B+C+D+E) IN HW SALDATE
LE FRESE NON LAVORANO ACCOPPIATE MA PERMETTONO
DI OTTENERE DIVERSI PROFILI CON PIU' PASSATE

SET OF 5 CUTTERBLOCK IN HW WELDED A,B,C,D,E
CUTTERHEADS DON'T WORK FITTED TOGETHER
BUT IT IS POSSIBLE TO REALIZE MANY PROFILE
WITH MORE PASSES

5

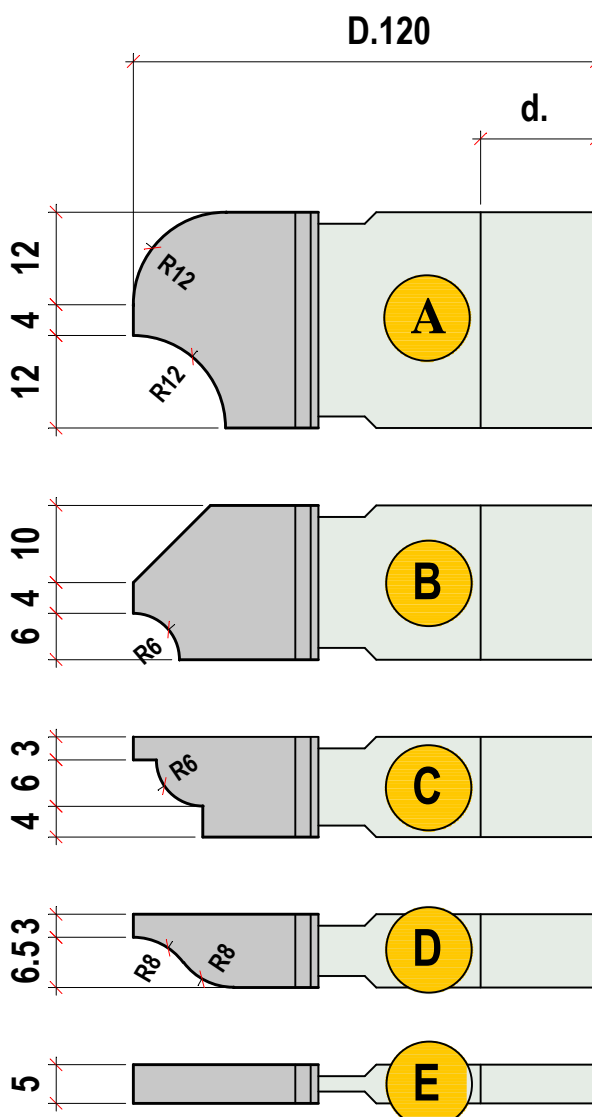
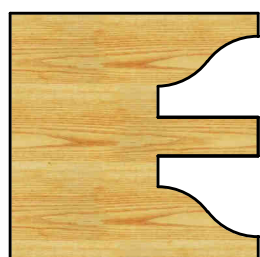
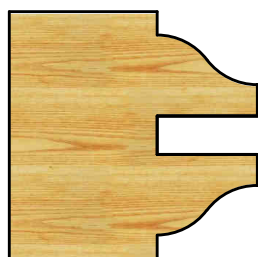
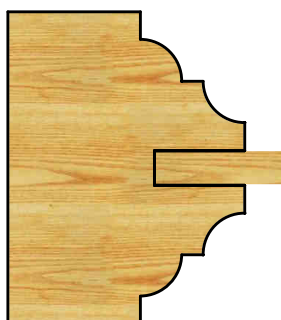
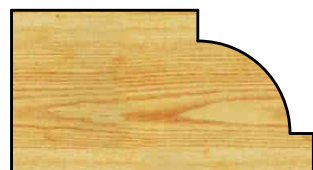
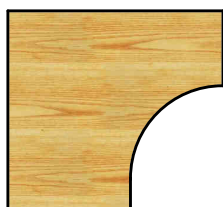
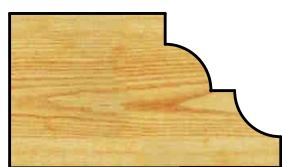
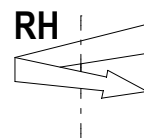
MAN

Codice nr. HW	Fresa	D. mm.	B. mm.	d. mm.	Z	n rpm
------------------	-------	-----------	-----------	-----------	---	----------

005 H GRUPPO FRESE-SET:A+B+C+D+E

A	120	28	30-35	2	6400-9200
B	120	20	30-35	2	6400-9200
C	120	13	30-35	2	6400-9200
D	120	5	30-35	2	6400-9200
E	120	9.5	30-35	2	6400-9200

FORI A RICHIESTA -BORES AVAILABLE -mm 31.75



6 FRESA PER MULTIPROFILI

UNIVERSAL PROFILE CUTTERBLOCK



FRESA MULTIPROFILO IN HW SALDATA A DUE TAGLI
PER REALIZZARE VARI PROFILI IN UNA O PIU' PASSATE

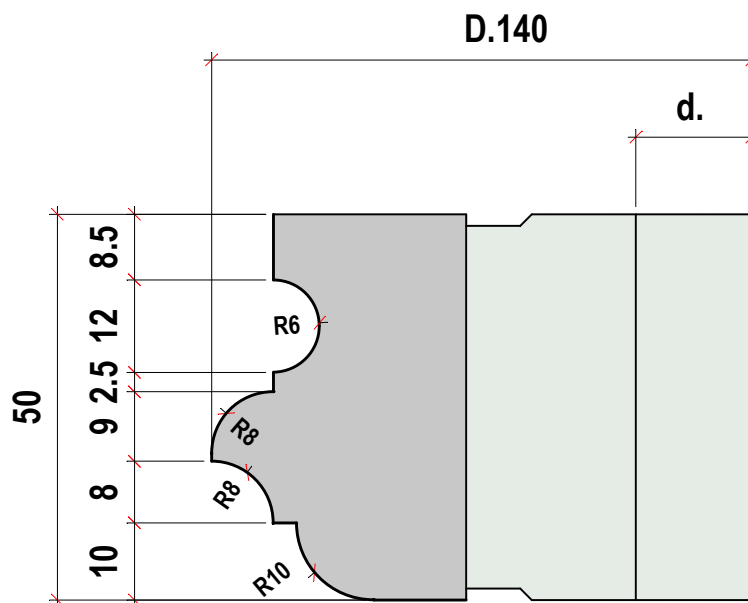
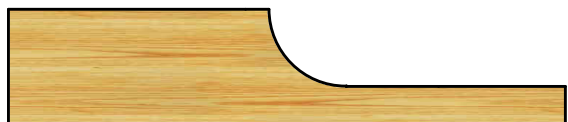
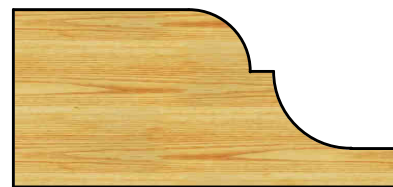
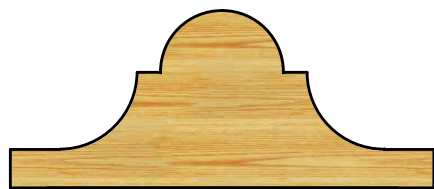
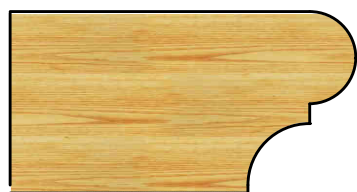
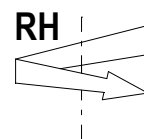
CUTTERBLOCK WITH TWO TEETH IN HW WELDED
TO PRODUCE MANY PROFILES IN ONE OR MORE TIMES

6

MAN

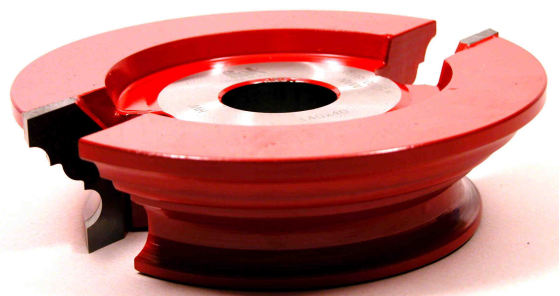
Codice nr. HW	D. mm.	B. mm.	d. mm.	Z	n rpm
006 H	140	50	30-35	2	5600-8000

FORI A RICHIESTA mm 31.75-40-50
BORES ON REQUEST



7 FRESA PER MULTIPROFILI

UNIVERSAL PROFILE CUTTERBLOCK



FRESA MULTIPROFILO IN HW SALDATA A DUE TAGLI
PER REALIZZARE VARI PROFILI IN UNA O PIU' PASSATE

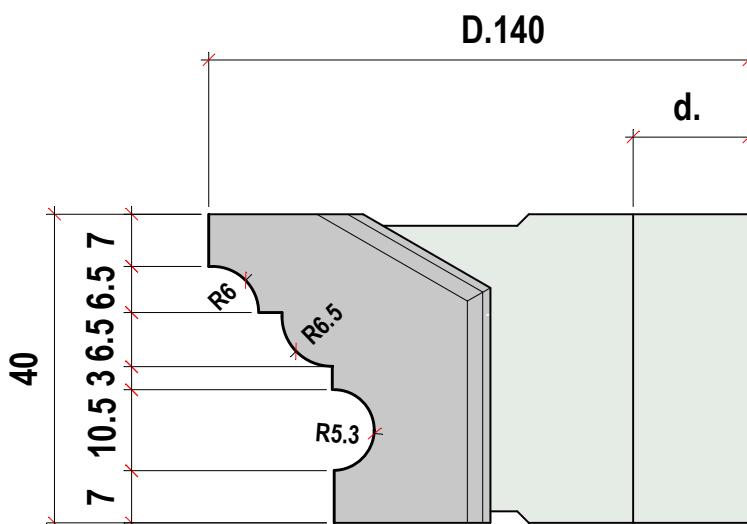
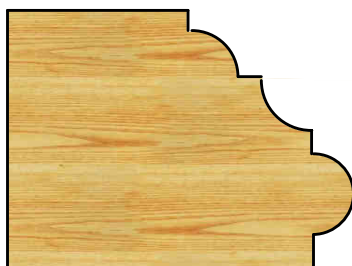
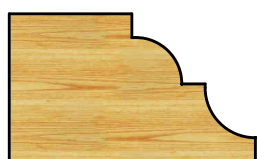
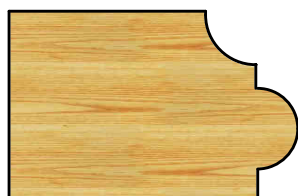
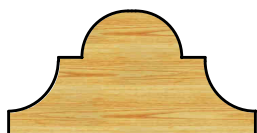
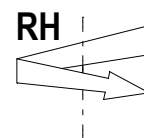
CUTTERBLOCK WITH TWO TEETH IN HW WELDED
TO PRODUCE MANY PROFILES IN ONE OR MORE TIMES

7

MAN

Codice nr. HW	D. mm.	B. mm.	d. mm.	Z	n rpm
007 H	143	40	30-35	2	5600-8000

FORI A RICHIESTA mm 31.75-40-50
BORES ON REQUEST



9 FRESE PER MULTIPROFILI

MULTIPROFILE CUTTERSET OF 2 CUTTERBLOCK



SET DI 2 FRESE A,B IN HW SALDATE A DUE TAGLI
PER REALIZZARE VARI PROFILI IN UNA O PIU' PASSATE

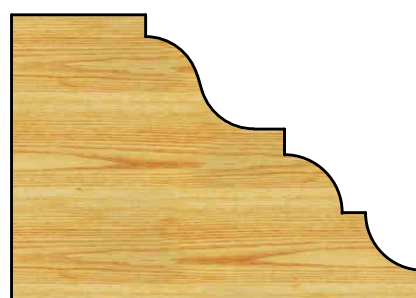
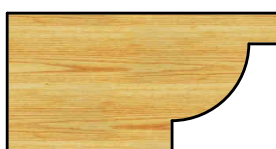
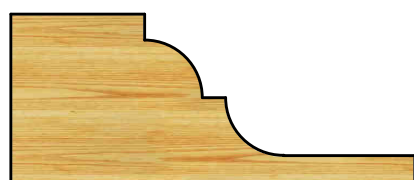
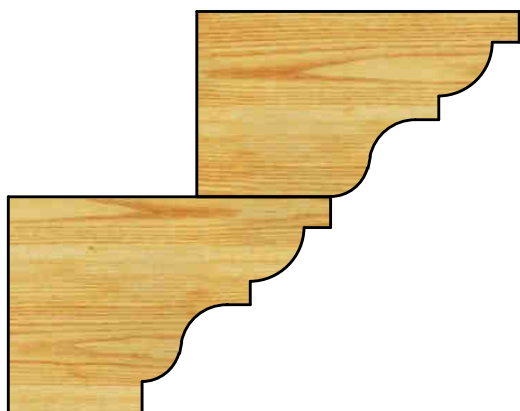
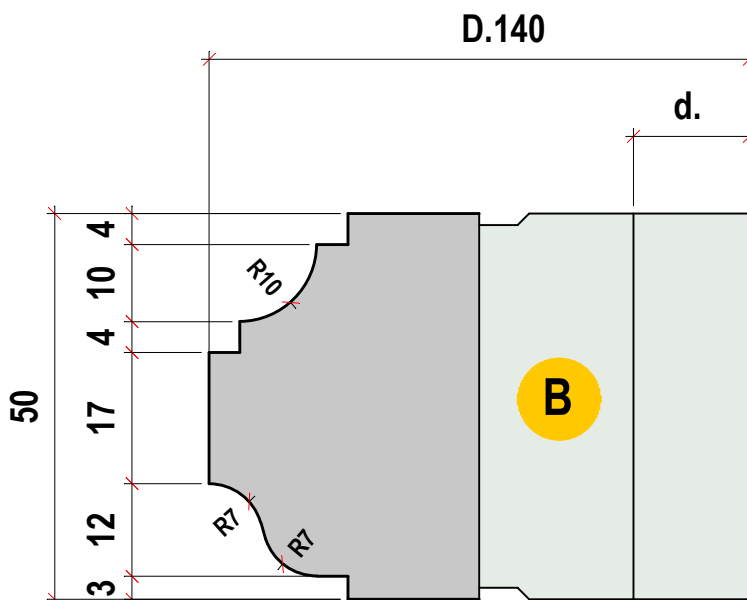
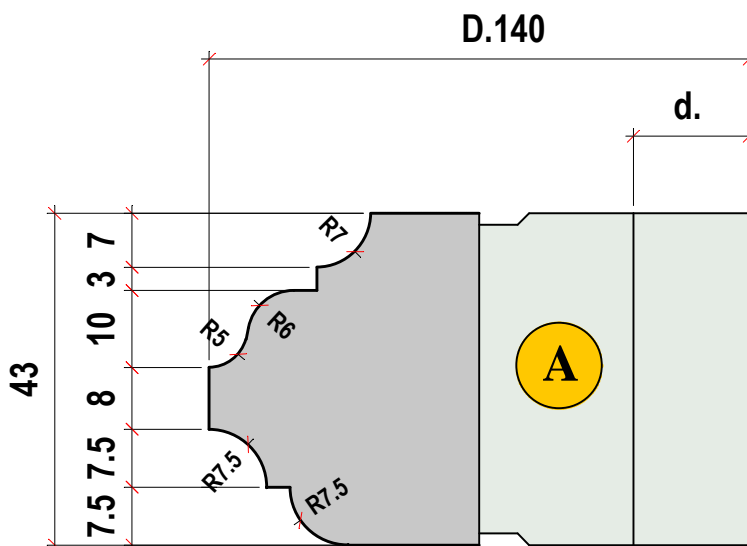
SET OF CUTTERBLOCK IN HW WELDED WITH TWO TEETH
TO PRODUCE MANY PROFILES IN ONE OR MORE TIMES

9

MAN

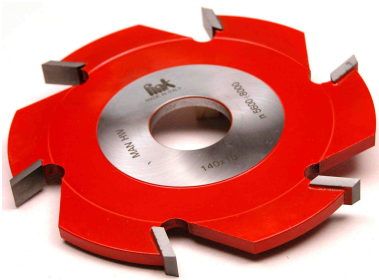
Codice	FRESA	D.	B.	d.	Z	n
HW	nr	mm.	mm.	mm.		rpm
009 H	A	140	43	30-35	2	5600-8000
	B	140	50	30-35	2	5600-8000

FORI A RICHIESTA mm 31.75-40-50
BORES ON REQUEST



14 FRESE PER INCASTRI SENZA RASANTI

GROOVING CUTTERS WITHOUT SPURS



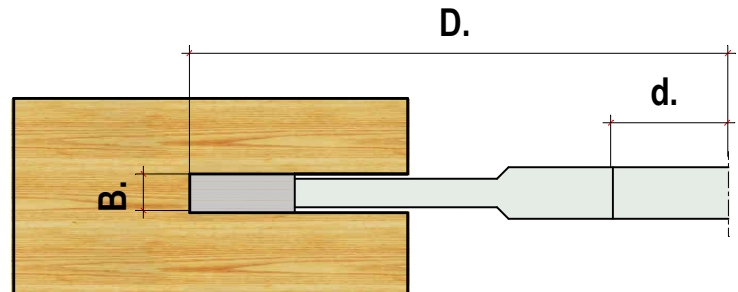
14

MAN

Codice HW	D. mm.	B. mm.	d. mm.	Z	CORPO BODY mm	n rpm
014 H 1204	120	4	30-35	6	3	6400-9200
014 H 1205	120	5	30-35	6	3.6	6400-9200
014 H 1206	120	6	30-35	6	3.6	6400-9200
014 H 1208	120	8	30-35	6	5.6	6400-9200
014 H 1210	120	10	30-35	6	5.6	6400-9200
014 H 1404	140	4	30-35	6	3	5600-8000
014 H 1405	140	5	30-35	6	3.6	5600-8000
014 H 1406	140	6	30-35	6	3.6	5600-8000
014 H 1408	140	8	30-35	6	5.6	5600-8000
014 H 1410	140	10	30-35	6	5.6	5600-8000

FRESE PER INCASTRI FISSI SENZA RASANTI IN HW SALDATO
ART. 5/17,5/18 CON INCISORI

GROOVING CUTTERS WITHOUT SCORING SPURS; IN HW WELDED
GROOVING CUTTERS WITH SPURS SEE TOOLS 5/17 5/18



FORI A RICHIESTA mm 31.75-40-50
BORES ON REQUEST

23 FRESE REGOLABILI CON INCISORI

ADJUSTABLE GROOVING CUTTERS WITH SPURS



23

MAN

Codice HW	D. mm.	B. mm.	d. mm.	Z	n rpm
023 H 1504	150	4 - 7.5	30-35	4+4	5300-7600
023 H 1508	150	8-15.5	30-35	4+4	5300-7600
023 H 1510	150	10-19.5	30-35	4+4	5300-7600

FORI A RICHIESTA mm 31.75-40-50
BORES ON REQUEST

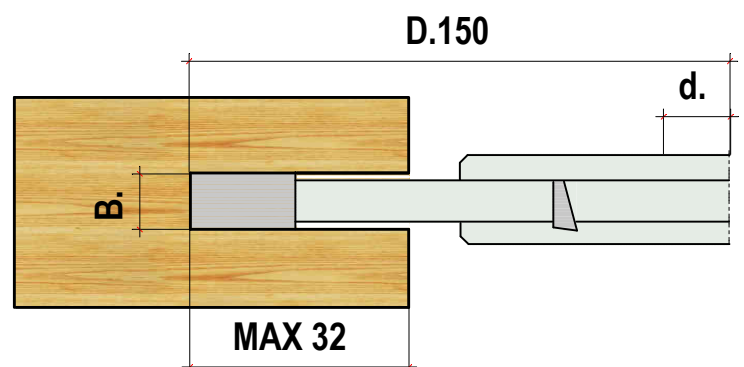
ANELLI DI REGOLAZIONE
RINGS FOR ADJUSTABLE THICKNESS

15S04 PER B = 4-7.5 mm
15S08 PER B = 8-15.5 mm
15S10 PER B = 10-19.5 mm

GLI ANELLI SONO IN DOTAZIONE ALLA FRESEA
RINGS INCLUDED WITH THE CUTTER

FRESE PER INCASTRI REGOLABILI
IN HW SALDATO CON RASANTI

ADJUSTABLE GROOVING CUTTERS
WITH SPURS IN HW WELDED



42 GRUPPO PER ANTINE DA CUCINA

COUNTER PROFILE CUTTERSET



GRUPPO FRESE IN HW SALDATO PER OTTENERE PROFILO E CONTROPROFILO PER ANTINE DA CUCINA LEGNO MASSIMO 24 mm

CUTTERSET IN HW WELDED TO PRODUCE PROFILE AND COUNTERPROFILE UNTIL THICKNESS OF 24 mm ;FOR CABINET DOORS

D.140

42

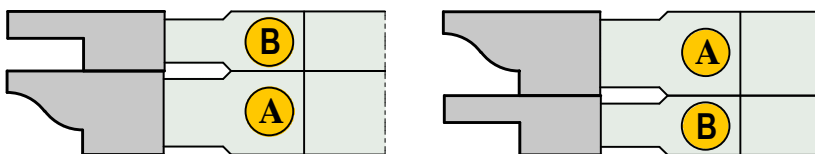
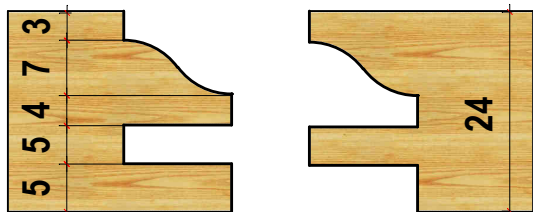
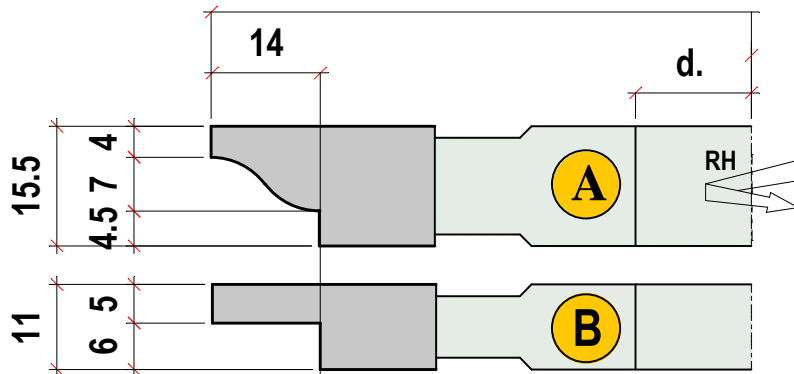
MAN

Codice	FRESA	D.	B.	d.	Z	n
HW	nr	mm.	mm.	mm.		rpm

042 H	GRUPPO - SET A+B					5600-8000
	A	140	15.5	30-35	3	
	B	140	11	30-35	3	

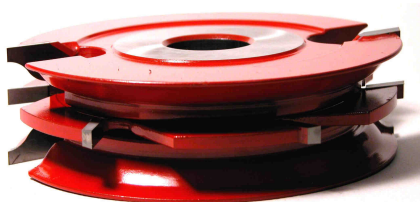
FORI A RICHIESTA mm 31.75-40-50

BORES AVAILABLE



42D GRUPPO PER PORTONCINI

COUNTER PROFILE CUTTERSET DOUBLE PROFILE



GRUPPO DI 3 FRESE IN HW SALDATO PER OTTENERE PROFILO E CONTROPROFILO PER PORTONCINI LEGNO MASSIMO 36 mm

CUTTERSET IN HW WELDED TO PRODUCE PROFILE AND COUNTERPROFILE FOR WOOD UNTIL THICKNESS 36 mm

D.140

42 D

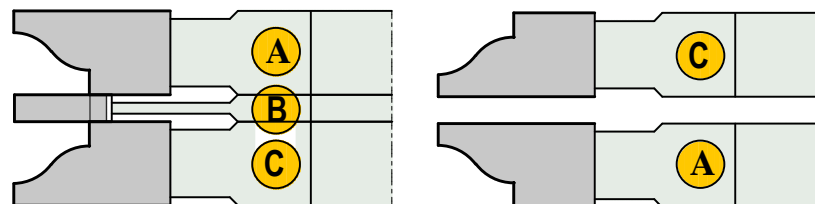
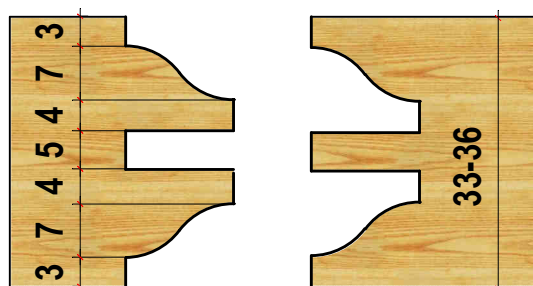
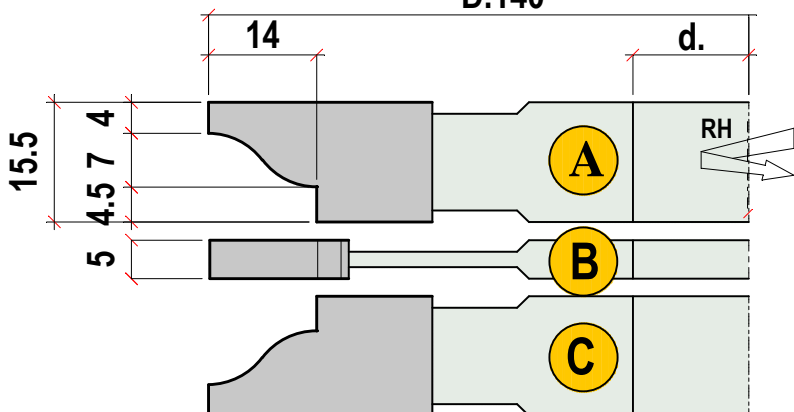
MAN

Codice	FRESA	D.	B.	d.	Z	n
HW	nr	mm.	mm.	mm.		rpm

042 HD	GRUPPO-SET -A+B+C					5600-8000
	A-C	140	15.5	30-35	2	
	B	140	5	30-35	6	

FORI A RICHIESTA -BORES AVAILABLE 31.75-40-50

FRESA -B- ANCHE CON SPESSORE 6-8-10
CUTTER - B- ALSO WITH THICKNESS 6-8-10



43 GRUPPO PER ANTINE DA CUCINA

COUNTER PROFILE CUTTERSET



43

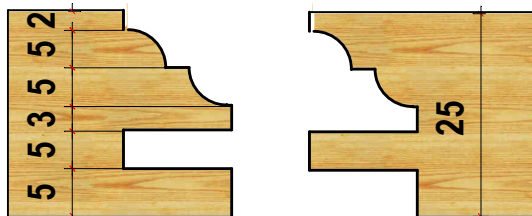
MAN

Codice	FRESA	D.	B.	d.	Z	n
HW	nr	mm.	mm.	mm.		rpm

043 H	GRUPPO - SET	A+B				5600-8000
	A	140	16	30-35	3	
	B	140	11	30-35	3	

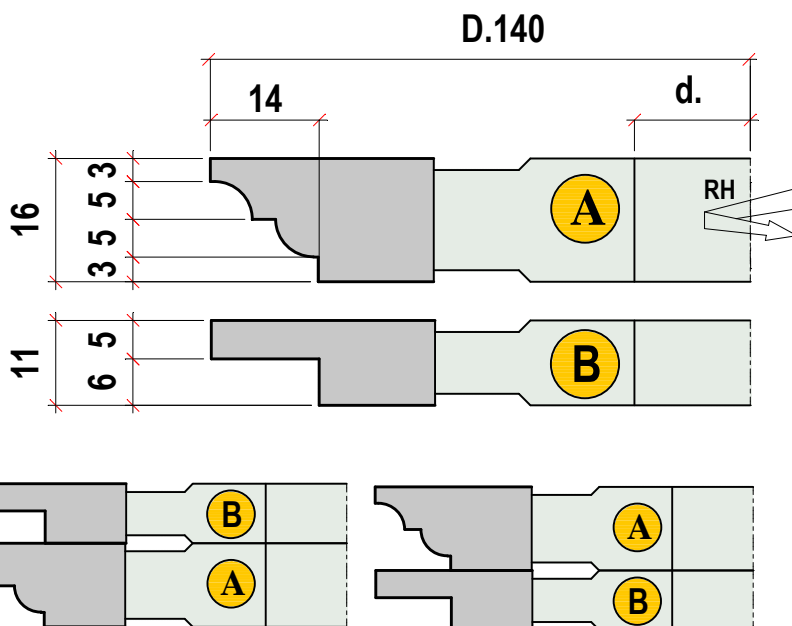
FORI A RICHIESTA mm 31.75-40-50

BORES AVAILABLE



GRUPPO FRESE IN HW SALDATO PER OTTENERE PROFILO E CONTROPROFILO PER ANTINE DA CUCINA LEGNO MASSIMO 24 mm

CUTTERSET IN HW WELDED TO PRODUCE PROFILE AND COUNTERPROFILE UNTIL THICKNESS OF 24 mm ;FOR CABINET DOORS



43D GRUPPO PER PORTONCINI

COUNTER PROFILE CUTTERSET DOUBLE PROFILE



43 D

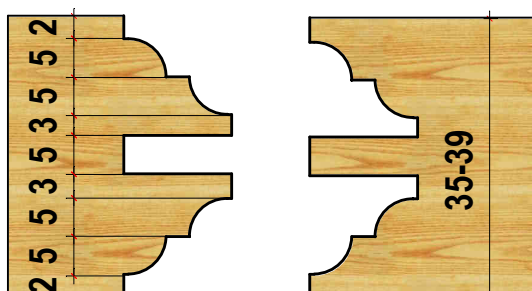
MAN

Codice	FRESA	D.	B.	d.	Z	n
HW	nr	mm.	mm.	mm.		rpm

043 HD	GRUPPO-SET	-A+B+C				5600-8000
	A-C	140	16	30-35	2	
	B	140	5	30-35	6	

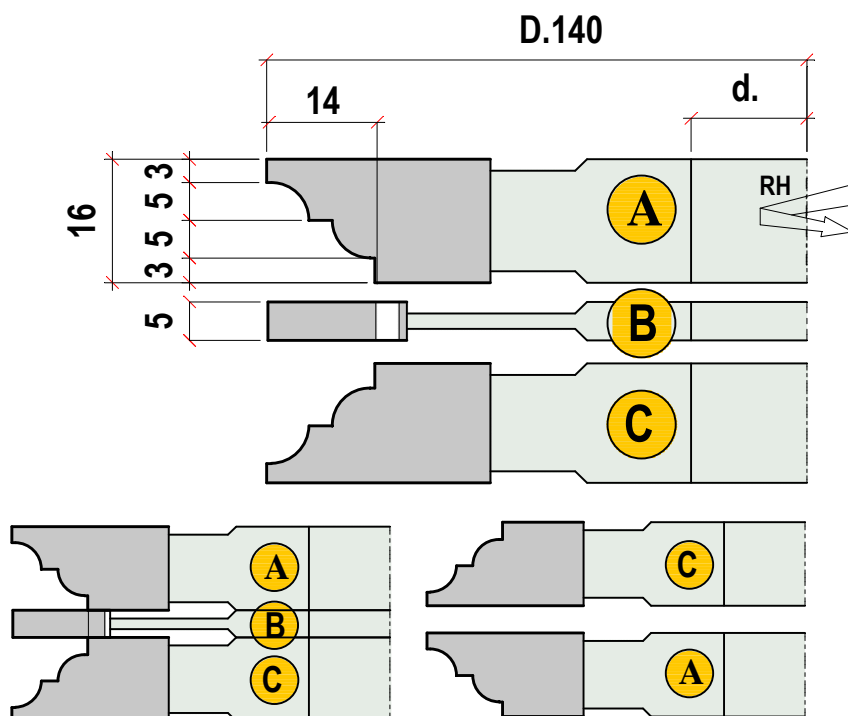
FORI A RICHIESTA -BORES AVAILABLE 31.75-40-50

FRESA -B- ANCHE CON SPESSORE 6-8-10
CUTTER - B- ALSO WITH THICKNESS 6-8-10



GRUPPO DI 3 FRESE IN HW SALDATO PER OTTENERE PROFILO E CONTROPROFILO PER PORTONCINI LEGNO MASSIMO 36 mm

CUTTERSET IN HW WELDED TO PRODUCE PROFILE AND COUNTERPROFILE FOR WOOD UNTIL THICKNESS 36 mm



48 FRESE PER QUARTI DI TONDO

QUARTER ROUND CUTTERS



LEGNO CONVESSO

FRESE PER QUARTI DI TONDO IN HW SALDATE
A 4 TAGLIANTI FINO AL R=30
TAGLI ASSIALMENTE INCLINATI
ROTAZIONE DESTRA LEGNO SOPRA

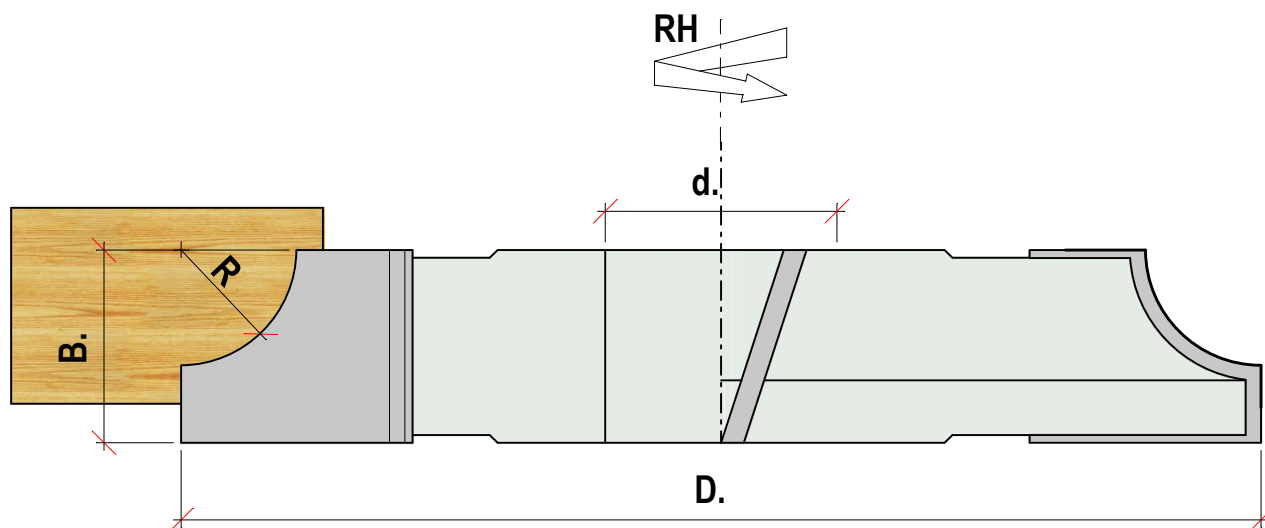
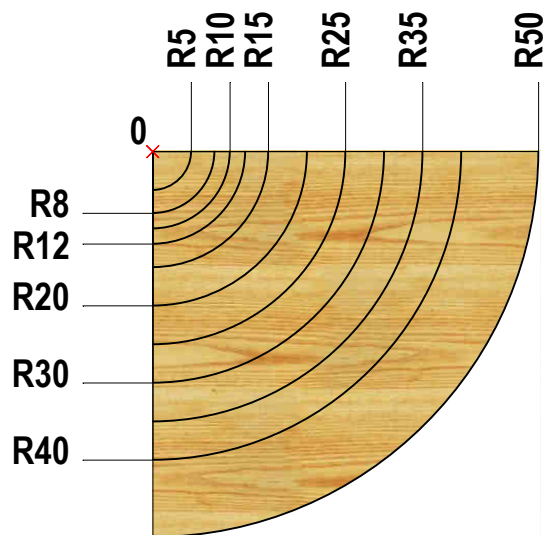
QUARTER ROUND CUTTER IN HW WELDED
WITH FOUR TEETH TILL R30
SHEAR ANGLE

48

MAN **MEC**

Codice	R	D.	B.	d.	Z		n
HW	mm.	mm.	mm.	mm.			rpm
048 H 05	5	140	15	30-35	4	MAN	5600-8000
048 H 08	8	140	15	30-35	4	MAN	5600-8000
048 H 10	10	140	20	30-35	4	MAN	5600-8000
048 H 12	12	140	20	30-35	4	MAN	5600-8000
048 H 15	15	140	25	30-35	4	MAN	5600-8000
048 H 20	20	140	30	30-35	4	MAN	5600-8000
048 H 25	25	160	35	30-35	4	MEC	7000
048 H 30	30	160	40	30-35	4	MEC	7000
048 H 35	35	160	50	30-35	3	MEC	7000
048 H 40	40	180	53	30-35	3	MEC	6500
048 H 50	50	200	65	30-35	3	MEC	6000

FORI A RICHIESTA mm 31.75-40-50
BORES ON REQUEST



49 FRESE PER QUARTI DI TONDO

QUARTER ROUND CUTTERS

LEGNO CONCAVO

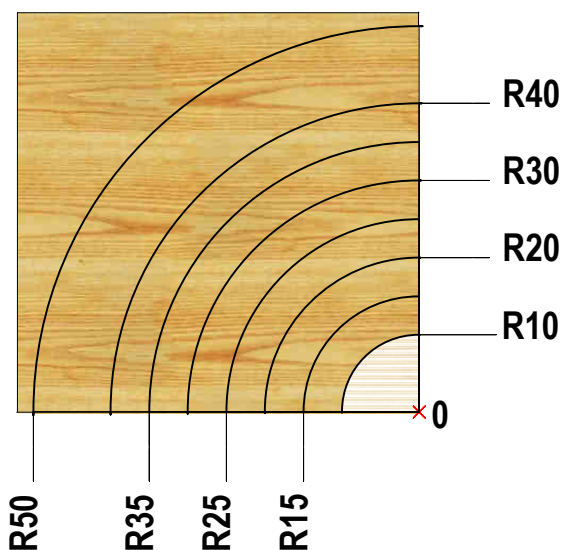
FRESE PER QUARTI DI TONDO IN HW SALDATE
 A 4 TAGLIENTI FINO AL R=25
 TAGLI ASSIALMENTE INCLINATI
 ROTAZIONE DESTRA LEGNO SOPRA
 QUARTER ROUND CUTTER IN HW WELDED
 WITH FOUR TEETH TILL R25
 SHEAR ANGLE



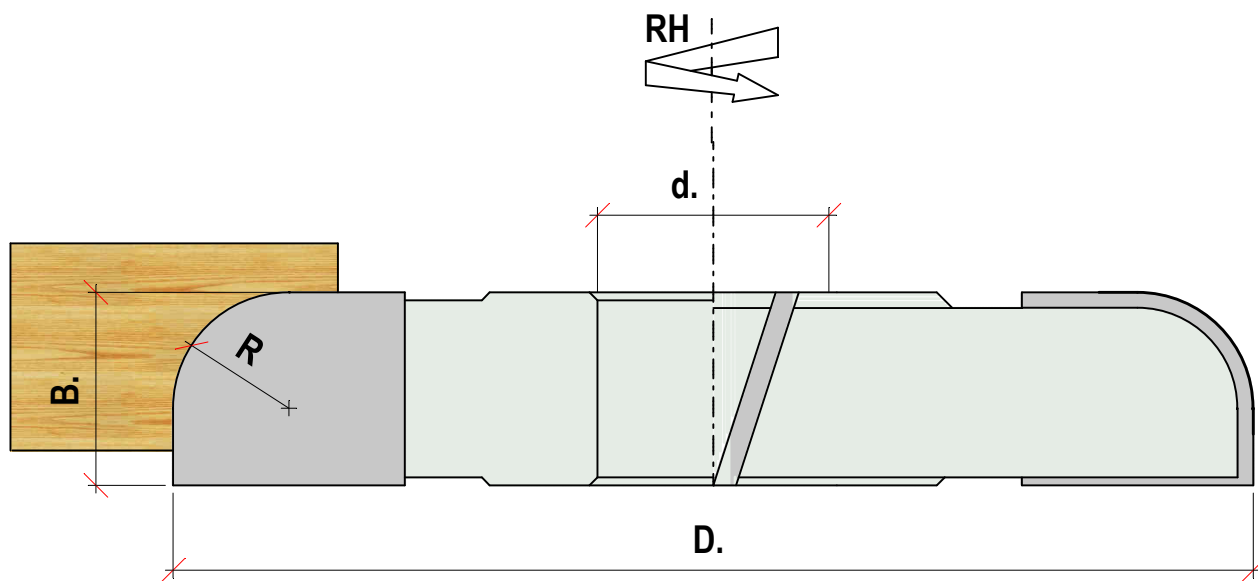
49

MAN **MEC**

Codice	R	D.	B.	d.	Z		n
HW	mm.	mm.	mm.	mm.			rpm
049 H 10	10	140	15	30-35	4	MAN	5600-8000
049 H 15	15	140	20	30-35	4	MAN	5600-8000
049 H 20	20	140	25	30-35	4	MAN	5600-8000
049 H 25	25	140	30	30-35	4	MEC	8000
049 H 30	30	160	35	30-35	3	MEC	7000
049 H 35	35	160	40	30-35	3	MEC	7000
049 H 40	40	180	50	30-35	3	MEC	6500
049 H 50	50	200	60	30-35	3	MEC	6000



FORI A RICHIESTA mm 31.75-40-50
 BORES ON REQUEST



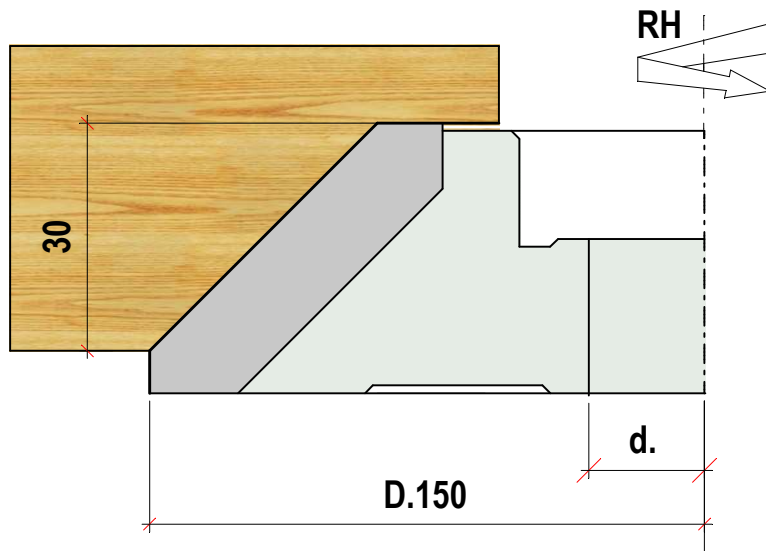
50 FRESA PER SMUSSI A 45°

BEVEL CUTTER 45°



FRESA PER SMUSSI A 45° IN HW SALDATO
TAGLIO PERIFERICO E SUL DIAMETRO MINORE

BEVEL CUTTER IN HW WELDED
FOR DIFFERENT INCLINATIONS AND
MANUAL FEED PRICE ON REQUEST



50

n 5000 - 8000

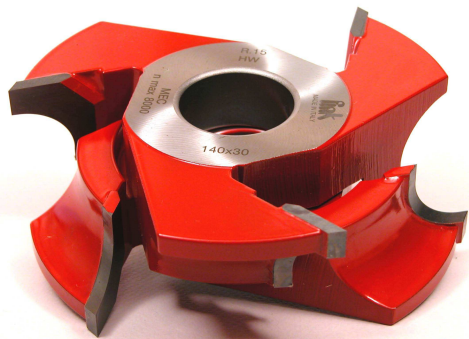
MAN

Codice	D.	B.	d.	Z	n
HW	ANGOLO	mm.	mm.	mm.	rpm
050 H	45°	150	35	30-35	4 5000 - 8000

FORI A RICHIESTA mm 31.75-40-50
BORES ON REQUEST

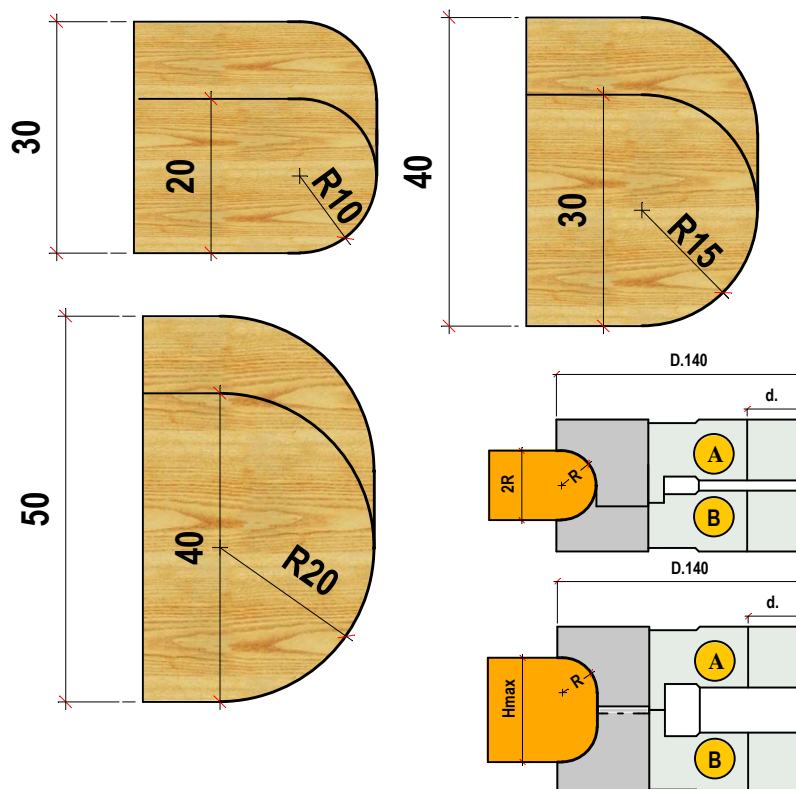
52 R FRESE REGOLABILI PER MEZZI TONDI

HALF ROUND ADJUSTABLE CUTTERS



COPPIA DI FRESE IN HW SALDATO PER MEZZO TONDO
REGOLANDO LE FRESE IN ALTEZZA RIMANE UN
PIANO AL CENTRO

SET OF ADJUSTABLE CUTTERS IN HW WELDED TO MAKE
HALF ROUND PROFILE
WITH THE CUTTERS OPENED YOU HAVE A FLAT ON THE WOOD



52 R

n max 8000

MEC

Codice	FRESA	R	D.	B.	d.	Z
HW		mm.	mm.	mm.	mm.	

052 HR 10	COPPIA-SET-A R10+B R10					
	A R10	10	140	25	*	3
	B R10	10	140	25	*	3
052 HR 15	COPPIA-SET-A R15+B R15					
	A R15	15	140	30	*	3
	B R15	15	140	30	*	3
052 HR 20	COPPIA-SET-A R20+B R20					
	A R20	20	140	35	*	3
	B R20	20	140	35	*	3

*PRODUZIONE SU RICHIESTA
ON DEMAND PRODUCTION

52 FRESE PER MEZZI TONDI

HALF ROUND CUTTERS



52

MAN MEC

Codice	R	D.	B.	d.	Z	n
HW	mm.	mm.	mm.	mm.		g/min

052 H 04	4	140	15	30-35	4	MAN 5600-8000
052 H 05	5	140	20	30-35	4	MAN 5600-8000
052 H 05.5	5.5	140	20	30-35	4	MAN 5600-8000
052 H 06	6	140	20	30-35	4	MAN 5600-8000
052 H 7.5	7.5	140	25	30-35	4	MAN 5600-8000
052 H 10	10	140	30	30-35	4	MAN 5600-8000
052 H 12.5	12.5	140	35	30-35	4	MAN 5600-8000
052 H 15	15	140	40	30-35	4	MAN 5600-8000
052 H 20	20	140	55	30-35	4	MEC 8000

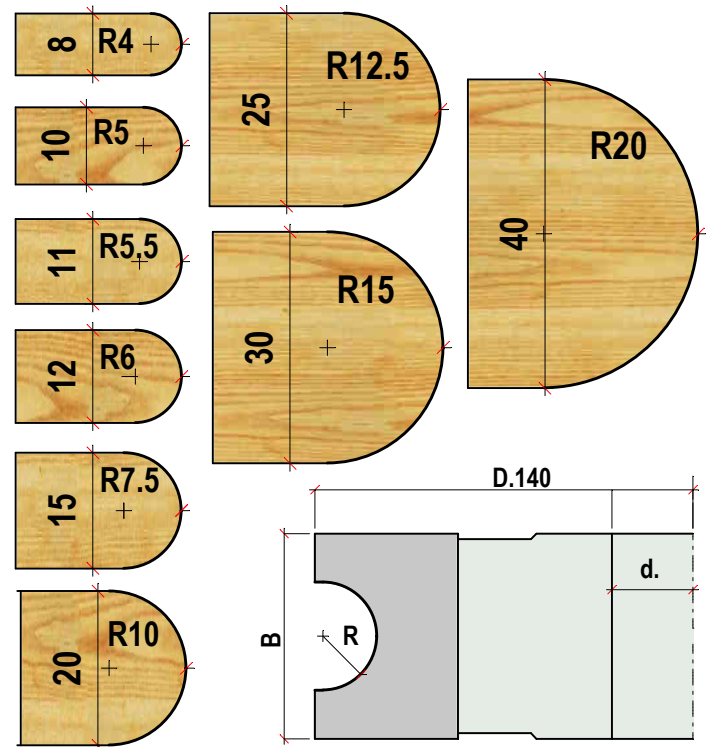
FORI A RICHIESTA mm 31.75-40-50

BORES ON REQUEST

LEGNO CONVESSO

FRESE PER MEZZI TONDI IN HW SALDATE
A QUATTRO TAGLIENTI

HALF ROUND CUTTER IN HW WELDED
WITH FOUR CUTTING EDGES



53 FRESE PER MEZZI TONDI

HALF ROUND CUTTERS



53

MAN

Codice	R	D.	B.	d.	Z	n
HW	mm.	mm.	mm.	mm.		g/min

053 H 04	4	140	8	30-35	4	MAN 5600-8000
053 H 05	5	140	10	30-35	4	MAN 5600-8000
053 H 06	6	140	12	30-35	4	MAN 5600-8000
053 H 07.5	7.5	140	15	30-35	4	MAN 5600-8000
053 H 10	10	140	20	30-35	4	MAN 5600-8000

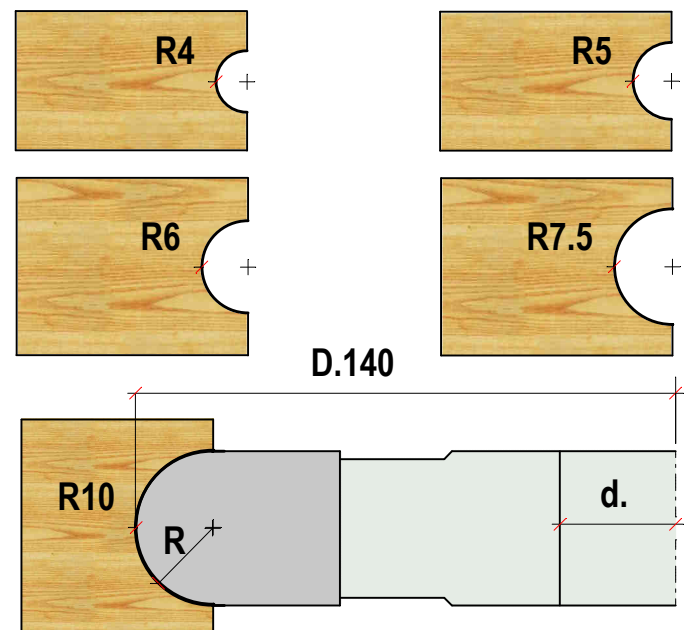
FORI A RICHIESTA mm 31.75-40-50

BORES ON REQUEST

LEGNO CONCAVO

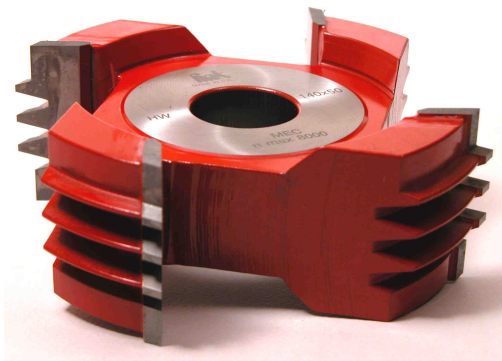
FRESE PER MEZZI TONDI IN HW SALDATE
A QUATTRO TAGLIENTI

HALF ROUND CUTTER IN HW WELDED
WITH FOUR CUTTING EDGES



56 FRESE PER GIUNZIONI

GLUE JOINT CUTTERS



FRESE PER GIUNZIONI IN HW SALDATE
 PROFONDITA' GIUNZIONE 9 mm
 SPESSORE LEGNO 28 - 38 - 48 mm
 JOINT CUTTER IN HW WELDED
 JOINT LENGTH 9 mm
 THICKNESS WOOD 28-38-48 mm

56

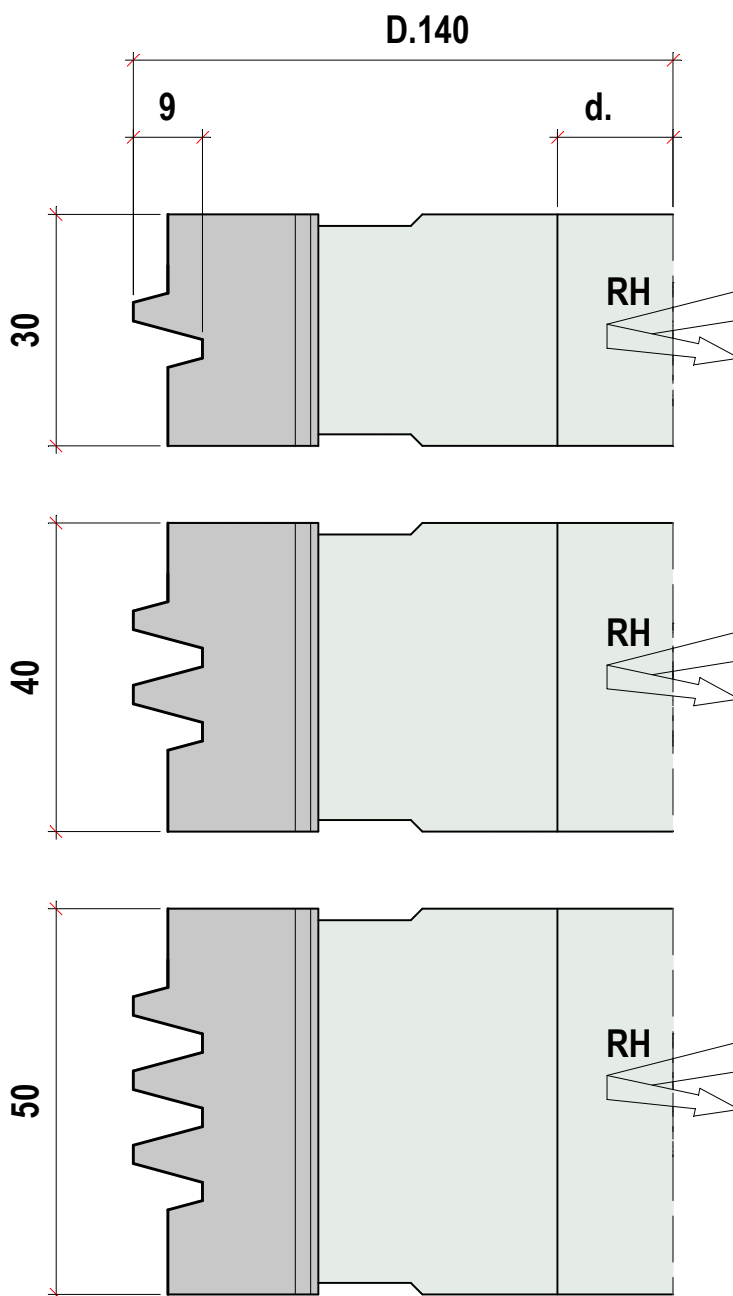
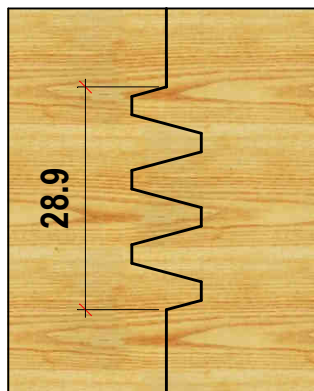
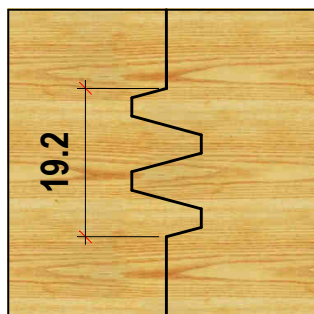
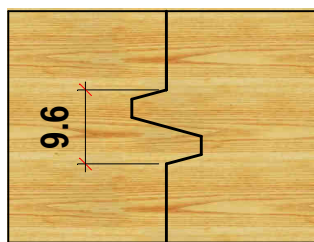
n max 8000

MEC

Codice	D.	B.	d.	Z	LEGNO
HW	mm.	mm.	mm.		WOOD mm

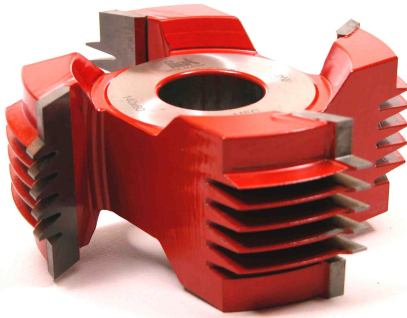
056 H 1430	140	30	30-35	4	12-28
056 H 1440	140	40	30-35	4	22-38
056 H 1450	140	50	30-35	4	32-48

FORI A RICHIESTA mm 31.75-40-50
 BORES ON REQUEST



59 FRESE PER GIUNZIONI LUNGHE - 12 mm

GLUE JOINT CUTTERS



FRESE IN HW SALDATE PER GIUNZIONI PROFONDE 12 mm
SPESSORE LEGNO 45 O 58 mm

GLUE JOINT CUTTER IN HW WELDED FOR JOINT LENGTH 12 mm
THICKNESS OF WOOD 45 OR 58 mm

59

n max 8000

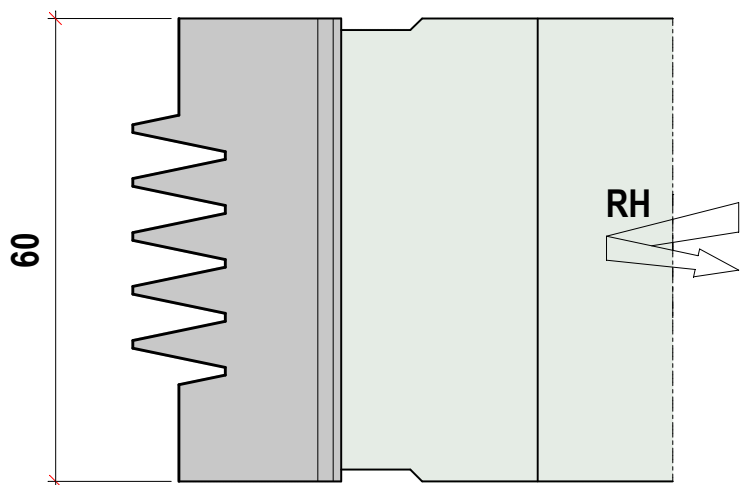
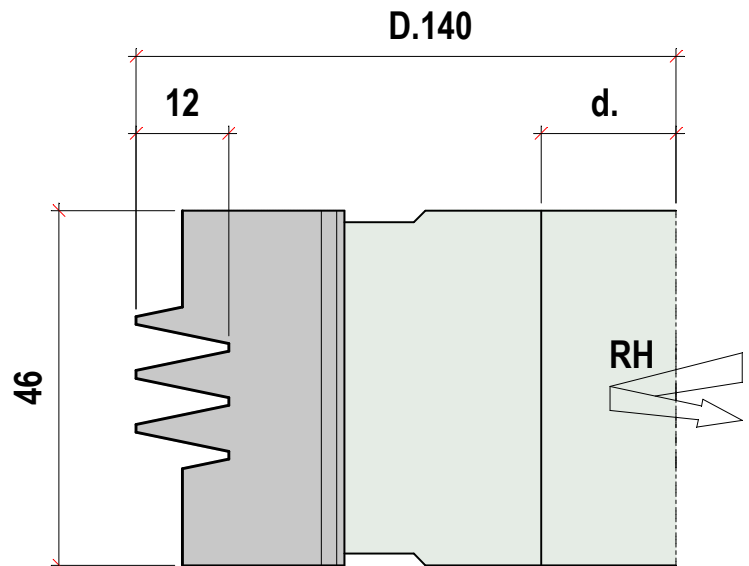
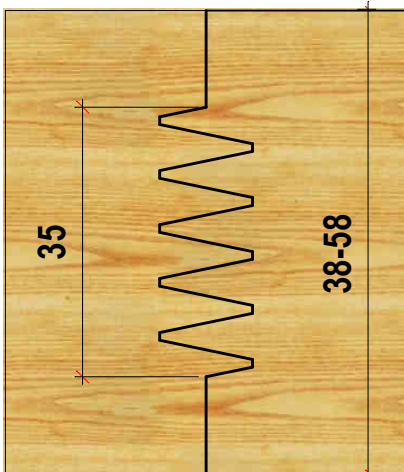
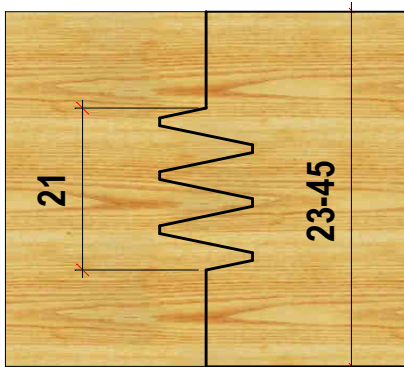
MEC

Codice	D.	B.	d.	Z	LEGNO
HW	mm.	mm.	mm.		WOOD mm

059 H 1445 140 45 30-35 4 23-45

059 H 1460 140 60 30-35 4 38-58

FORI A RICHIESTA mm 31.75-40-50
BORES ON REQUEST

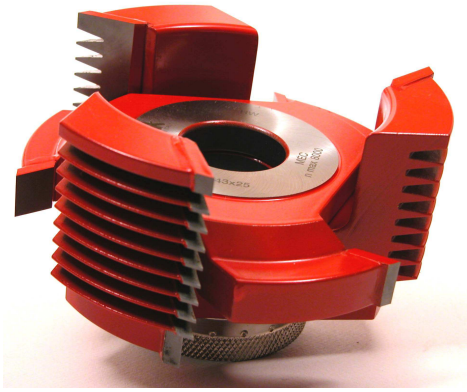


60 FRESE REGOLABILI PER GIUNZIONI

ADJUSTABLE GLUE JOINT CUTTER

FRESE IN HW SALDATO CON GHIERA PER REGOLARE LA FORZATURA DELLA GIUNZIONE SECONDO IL TIPO DI LEGNO
 LEGNO CON SPESSORE DA 12 FINO 75 mm CON ANELLI
 PASSO DEI DENTI 6 mm

CUTTERBLOCKS IN HW WELDED WITH ADJUSTING RING NUT
 IT IS POSSIBLE TO MAKE JOINTS MORE OR LESS FORCED IN ACCORDING WITH THE WORK IN LENGTH OR ACROSS.
 THE RINGS TO ADJUST THE THICKNESS ARE INCLUDED



60

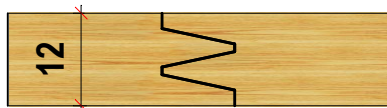
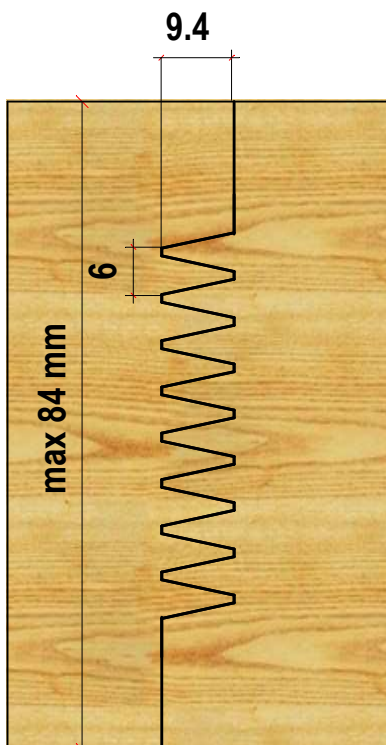
n max 8000

MEC

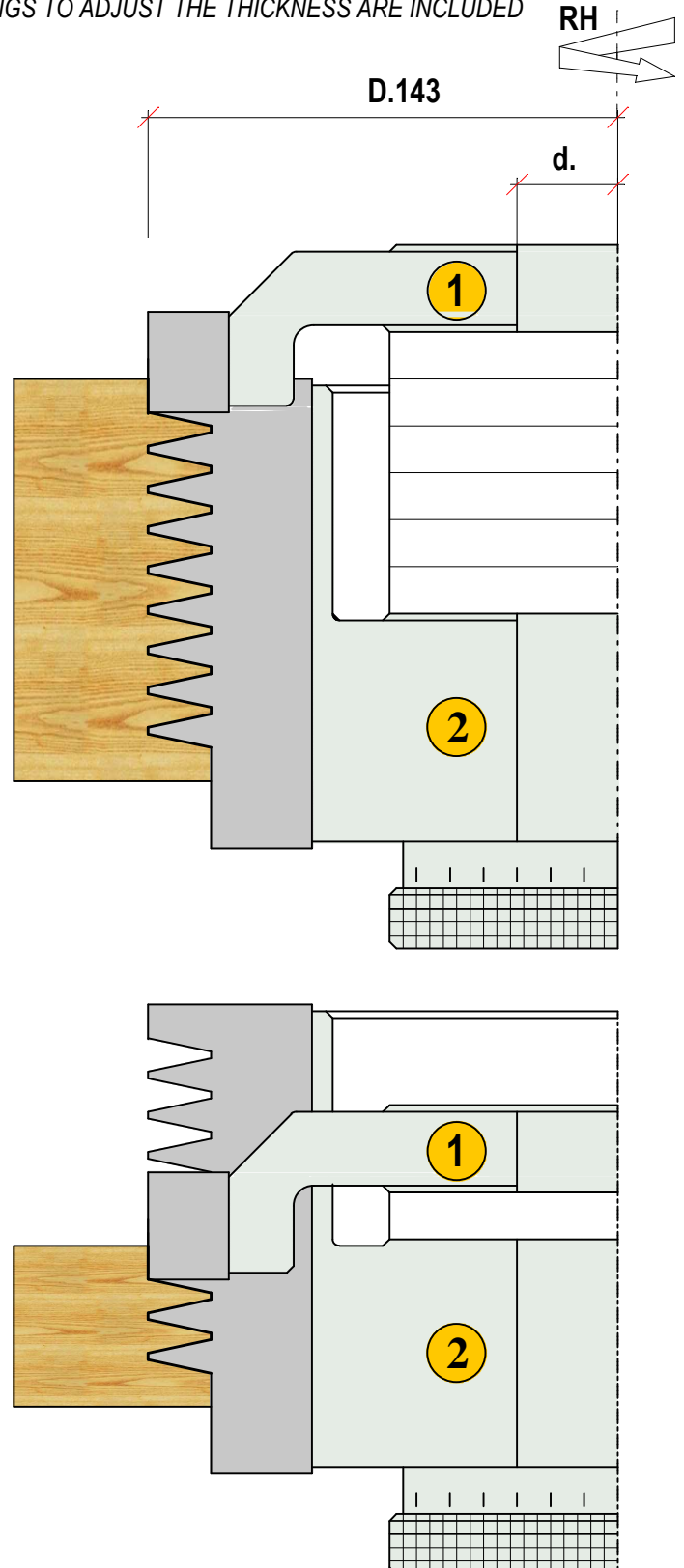
Codice	FRESA	D.	B.	d.	Z	LEGNO
HW		mm.	mm.	mm.		WOOD mm

060 H	GRUPPO-SET- 1+2					
1	143	25	30-35	3	12-84	
2	143	73	30-35	3		

FORI A RICHIESTA mm 31.75-40-50
 BORES ON REQUEST

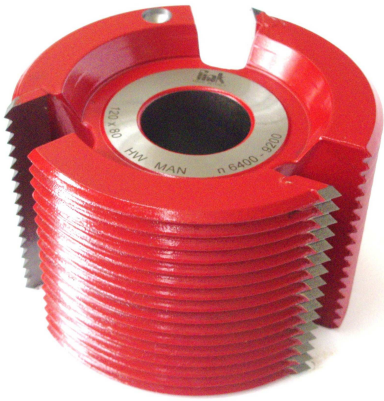


Nr DENTI	LEGNO
Nr teeth	wood
1	12-30
2	20-40
3	25-45
4	30-50
5	35-55
6	40-60
7	45-65
8	50-84



61 FRESA PER GIUNZIONI

GLUE JOINT CUTTERBLOCK



FRESA IN HW SALDATO PER GIUNZIONI LUNGO VENA
CON ANELLO DI 2.5 mm PER COORDINARE LE FRESATURE
MASCHIO E FEMMINA

MILLING CUTTER IN HW WELDED TO PRODUCE JOINT
ALONG THE GRAIN. THE CUTTER IS SUPPLIED WITH A
2.5 mm RING GAUGE TO COORDINATE MILLING MALE
AND FEMALE

61

n 6000 - 9000

MAN

Codice	D.	B.	d.	Z	LEGNO
HW	mm.	mm.	mm.		WOOD mm

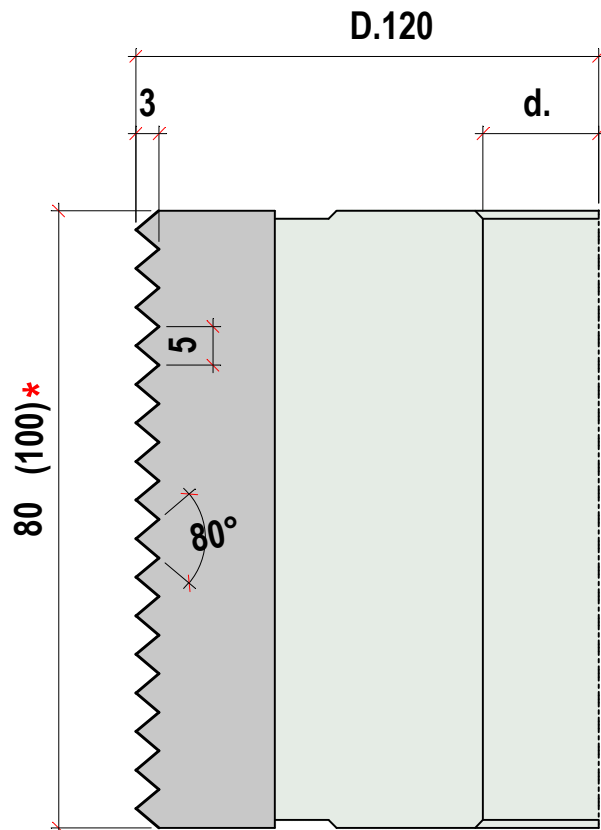
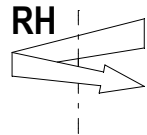
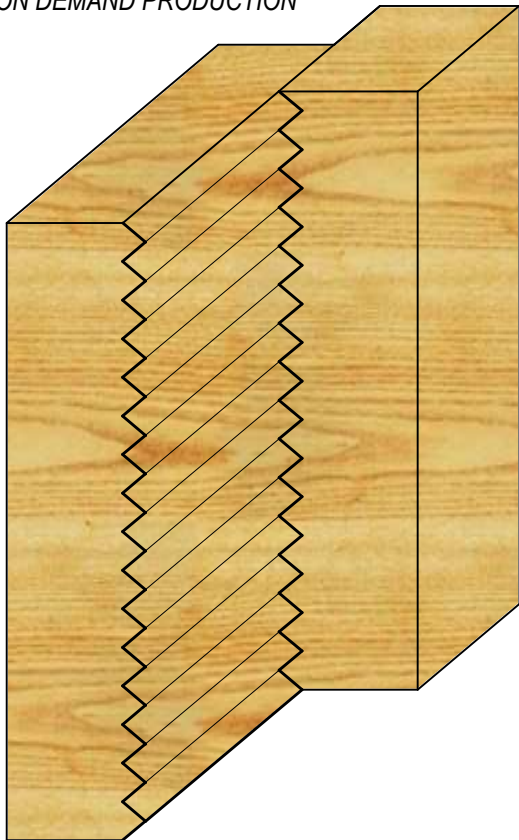
061 H 1280 120 80 30-35 3 15-75

061 H 12100 120 100 * 3 15-95

FORI A RICHIESTA mm 31.75-40-50

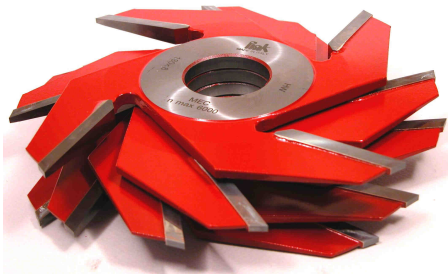
BORES ON REQUEST

* PRODUZIONE SU RICHIESTA
ON DEMAND PRODUCTION



62 FRESE PER GIUNZIONI PROFONDE

CUTTER FOR DEEP JOINT



FRESA IN HW SALDATO PER GIUNZIONI PROFONDE
 ACCOPPIARE PIU' FRESE IN RELAZIONE ALLO SPESSORE
 E ALLA PROFONDITA' DA LAVORARE. ANELLI A CORREDO
 PER LA PROFONDITA' RICHIESTA

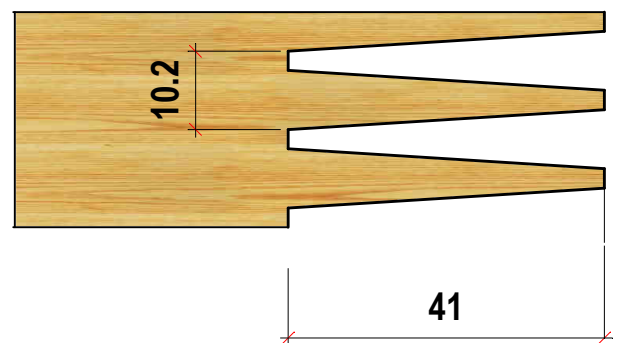
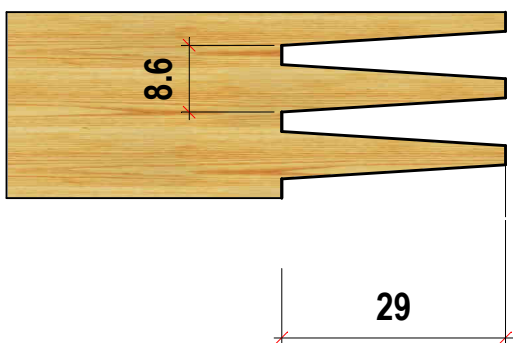
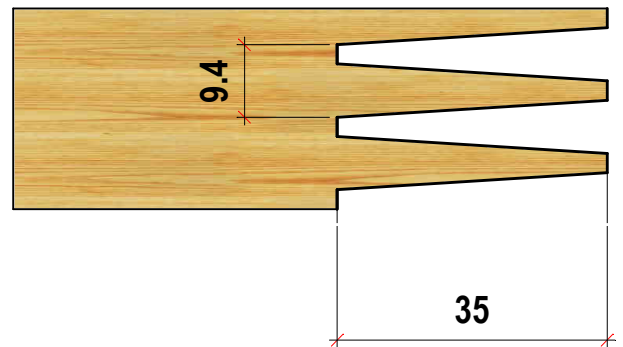
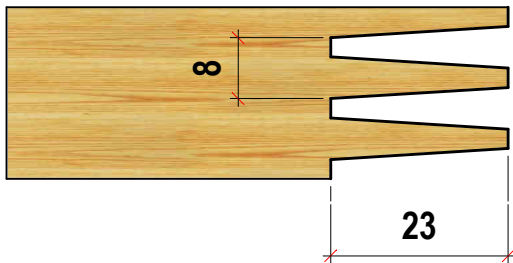
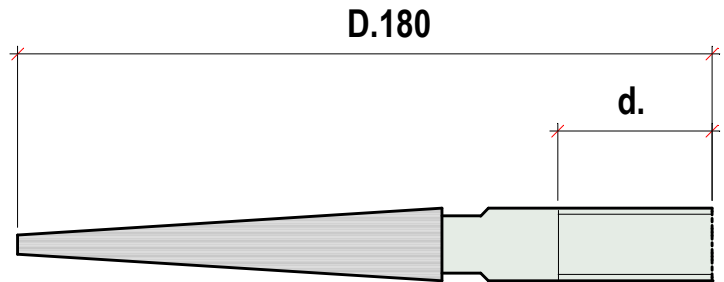
CUTTER IN HW WELDED TO PRODUCE DEEP JOINT
 MORE CUTTERS MUST BE FITTED TOGETHER TO
 REACH THE THICKNESS OF THE WOOD TO WORK.
 DEEPT AND THICKNESS ADJUSTABLE WITH RINGS

62

n max 7000

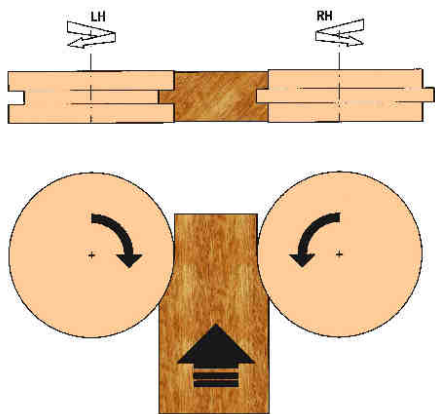
MEC

Codice	D.	B.	d.	Z
HW	mm.	mm.	mm.	
062 H	180	8	30-35-40-50	4



80 FRESE PER PERLINE E PARQUET

ADJUSTABLE TONGUE AND GROOVE CUTTERS



GRUPPI FRESE IN HW SALDATO CON SPESSORE VARIABILE E 4 TAGLIENTI. ANCHE SU DISEGNO DEL CLIENTE REGOLAZIONE CON ANELLI

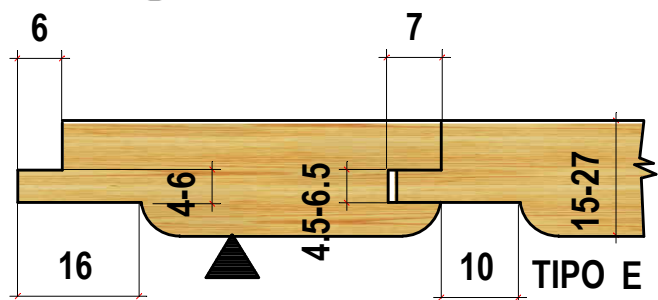
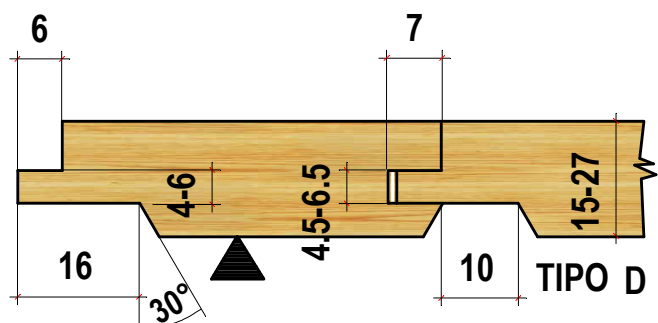
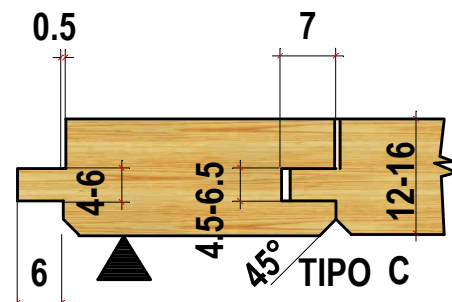
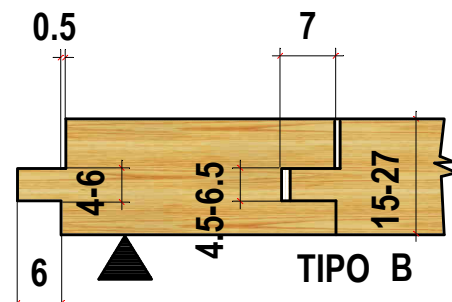
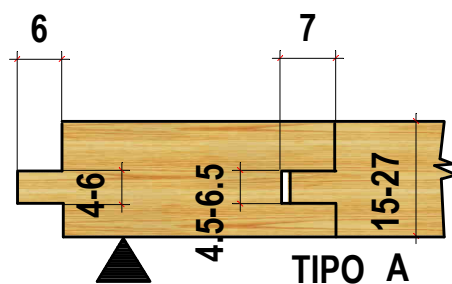
ADJUSTABLE TONGUE AND GROOVE CUTTERS IN HW WELDED WITH 4 TEETH. ALSO IN ACCORDING WITH CUSTOMER DRAWING ADJUSTABLE WITH RINGS

80

MEC

Codice	D.	B.	d.	Z	n max
HW	mm.	mm.	mm.		

080 H 1430	140	30	40	4	8000
080 H 1630	160	30	40	4-6	7000
080 H 1830	180	30	40	6-8	6500





fink

FINK s.r.l.
Via G.Giusti 15
20900 Monza - MB
tel: +39 - 039 - 386961
tel: +39 - 039 - 386962
fax: +39 - 039 - 361458
e-mail: fink@finktools.com
www.finktools.com

